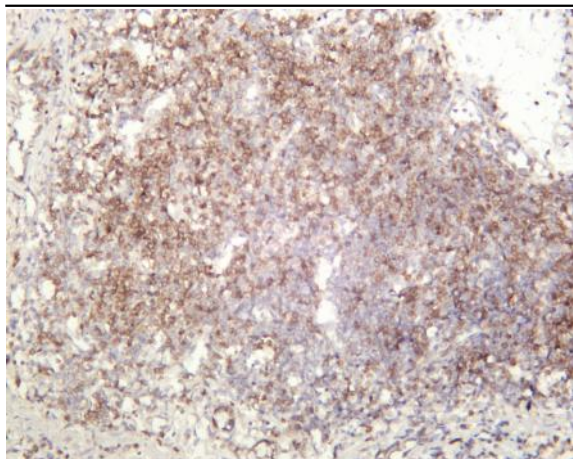


Lck (PT0416R) PT® Rabbit mAb

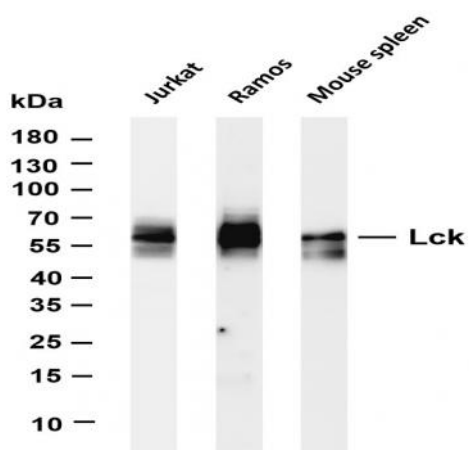
Catalog No :	YM8258
Reactivity :	Human; Mouse; Rat;
Applications :	WB;IHC;IF;IP;ELISA
Target :	Lck
Fields :	>>NF-kappa B signaling pathway;>>Osteoclast differentiation;>>Natural killer cell mediated cytotoxicity;>>Th1 and Th2 cell differentiation;>>Th17 cell differentiation;>>T cell receptor signaling pathway;>>Yersinia infection;>>Human T-cell leukemia virus 1 infection;>>PD-L1 expression and PD-1 checkpoint pathway in cancer;>>Primary immunodeficiency
Gene Name :	LCK
Protein Name :	Tyrosine-protein kinase Lck
Human Gene Id :	3932
Human Swiss Prot No :	P06239
Mouse Gene Id :	16818
Mouse Swiss Prot No :	P06240
Rat Gene Id :	313050
Rat Swiss Prot No :	Q01621
Specificity :	endogenous
Formulation :	PBS, 50% glycerol, 0.05% Proclin 300, 0.05%BSA
Source :	Monoclonal, rabbit, IgG, Kappa
Dilution :	IHC 1:200-1:1000;WB 1:500-1:2000;IF 1:200-1:1000;ELISA 1:5000-1:20000;IP 1:50-1:200;

Purification :	Protein A
Storage Stability :	-15°C to -25°C/1 year(Do not lower than -25°C)
Molecularweight :	58kD
Observed Band :	58kD
Cell Pathway :	Natural killer cell mediated cytotoxicity;T_Cell_Receptor;Primary immunodeficiency;
Background :	<p>This gene is a member of the Src family of protein tyrosine kinases (PTKs). The encoded protein is a key signaling molecule in the selection and maturation of developing T-cells. It contains N-terminal sites for myristylation and palmitylation, a PTK domain, and SH2 and SH3 domains which are involved in mediating protein-protein interactions with phosphotyrosine-containing and proline-rich motifs, respectively. The protein localizes to the plasma membrane and pericentrosomal vesicles, and binds to cell surface receptors, including CD4 and CD8, and other signaling molecules. Multiple alternatively spliced variants encoding different isoforms have been described. [provided by RefSeq, Aug 2016],</p>
Function :	<p>catalytic activity:ATP + a [protein]-L-tyrosine = ADP + a [protein]-L-tyrosine phosphate.,disease:A chromosomal aberration involving LCK is found in leukemias. Translocation t(1;7)(p34;q34) with TCRB.,domain:The SH2 domain mediates interaction with SQSTM1. Interaction is regulated by Ser-59 phosphorylation.,enzyme regulation:Inhibited by tyrosine phosphorylation.,function:Tyrosine kinase that plays an essential role for the selection and maturation of developing T-cell in the thymus and in mature T-cell function. Is constitutively associated with the cytoplasmic portions of the CD4 and CD8 surface receptors and plays a key role in T-cell antigen receptor(TCR)-linked signal transduction pathways. Association of the TCR with a peptide antigen-bound MHC complex facilitates the interaction of CD4 and CD8 with MHC class II and class I molecules, respectively, and thereby recruits the associat</p>
Subcellular Location :	Cytoplasm, Membrane
Expression :	Expressed specifically in lymphoid cells.

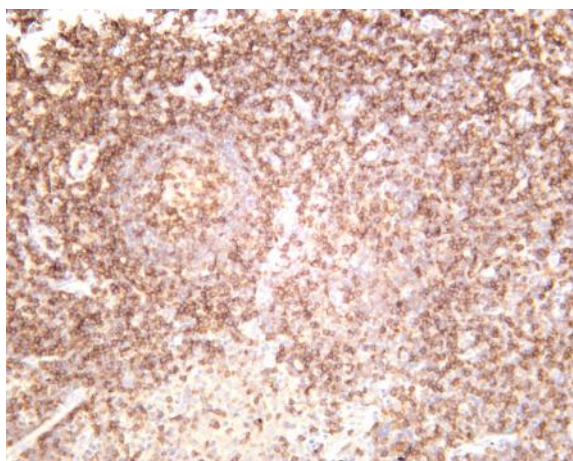
Products Images



Rat colon was stained with anti-Lck (PT0416R) rabbit antibody



Various whole cell lysates were separated by 4-20% SDS-PAGE, and the membrane was blotted with anti-Lck (PT0416R) antibody. The HRP-conjugated Goat anti-Rabbit IgG(H + L) antibody was used to detect the antibody. Lane 1: Jurkat Lane 2: Ramos Lane 3: Mouse spleen Predicted band size: 58kDa Observed band size: 58kDa



Human tonsil was stained with anti-Lck (PT0416R) rabbit antibody