

## MEK-7 Polyclonal Antibody

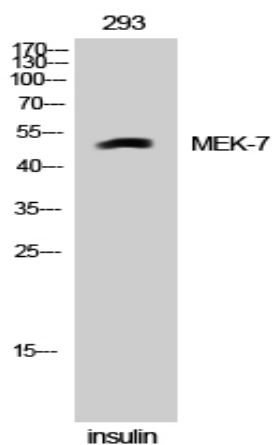
|                              |  |
|------------------------------|--|
| <b>Catalog No :</b>          | YT2725   |
| <b>Reactivity :</b>          | Human;Mouse;Rat  |
| <b>Applications :</b>        | WB;IHC   |
| <b>Target :</b>              | MKK7   |
| <b>Fields :</b>              | >>MAPK signaling pathway;>>ErbB signaling pathway;>>Protein processing in endoplasmic reticulum;>>Osteoclast differentiation;>>Tight junction;>>Toll-like receptor signaling pathway;>>T cell receptor signaling pathway;>>Fc epsilon RI signaling pathway;>>TNF signaling pathway;>>Neurotrophin signaling pathway;>>GnRH signaling pathway;>>Relaxin signaling pathway;>>Alcoholic liver disease;>>Alzheimer disease;>>Huntington disease;>>Pathways of neurodegeneration - multiple diseases;>>Salmonella infection;>>Yersinia infection;>>Hepatitis B;>>Kaposi sarcoma-associated herpesvirus infection;>>Epstein-Barr virus infection;>>Human immunodeficiency virus 1 infection;>>Chemical carcinogenesis - reactive oxygen species;>>Lipid and atherosclerosis;>>Fluid shear stress and atherosclerosis |
| <b>Gene Name :</b>           | MAP2K7   |
| <b>Protein Name :</b>        | Dual specificity mitogen-activated protein kinase kinase 7   |
| <b>Human Gene Id :</b>       | 5609   |
| <b>Human Swiss Prot No :</b> | O14733   |
| <b>Mouse Gene Id :</b>       | 26400  |
| <b>Mouse Swiss Prot No :</b> | Q8CE90   |
| <b>Rat Gene Id :</b>         | 363855   |
| <b>Rat Swiss Prot No :</b>   | Q4KSH7   |
| <b>Immunogen :</b>           | The antiserum was produced against synthesized peptide derived from human MAP2K7. AA range:241-290   |

---

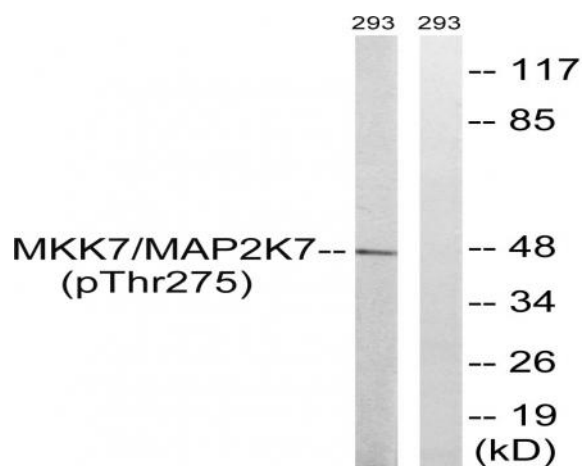
|                               |   |
|-------------------------------|---|
| <b>Specificity :</b>          | <u>MEK-7 Polyclonal Antibody detects endogenous levels of MEK-7 protein.</u>  |
| <b>Formulation :</b>          | <u>Liquid in PBS containing 50% glycerol, 0.5% BSA and 0.02% sodium azide.</u>  |
| <b>Source :</b>               | <u>Polyclonal, Rabbit,IgG</u>   |
| <b>Dilution :</b>             | <u>WB 1:500-2000;IHC 1:50-300</u>   |
| <b>Purification :</b>         | <u>The antibody was affinity-purified from rabbit antiserum by affinity-chromatography using epitope-specific immunogen.</u>  |
| <b>Concentration :</b>        | <u>1 mg/ml</u>  |
| <b>Storage Stability :</b>    | <u>-15°C to -25°C/1 year(Do not lower than -25°C)</u>   |
| <b>Observed Band :</b>        | <u>47kD</u>   |
| <b>Cell Pathway :</b>         | <u>MAPK_ERK_Growth;MAPK_G_Protein;ErbB_HER;Toll_Like;T_Cell_Receptor;F c epsilon RI;Neurotrophin;GnRH;</u>  |
| <b>Background :</b>           | <u>The protein encoded by this gene is a dual specificity protein kinase that belongs to the MAP kinase kinase family. This kinase specifically activates MAPK8/JNK1 and MAPK9/JNK2, and this kinase itself is phosphorylated and activated by MAP kinase kinase kinases including MAP3K1/MEKK1, MAP3K2/MEKK2,MAP3K3/MEKK5, and MAP4K2/GCK. This kinase is involved in the signal transduction mediating the cell responses to proinflammatory cytokines, and environmental stresses. Alternative splicing results in multiple transcript variants. [provided by RefSeq, Jul 2014],</u>   |
| <b>Function :</b>             | <u>catalytic activity:ATP + a protein = ADP + a phosphoprotein.,cofactor:Magnesium.,enzyme regulation:Activated by phosphorylation by specific MAP kinase kinase kinases such as MAP3K1/MEKK1, MAP3K3/MEKK3, MAP3K11/MLK3 and MAP3K12/DLK.,function:Stress activated, dual specificity kinase that activates the JUN kinases MAPK8/JNK1, MAPK9/JNK2 and MAPK10/JNK3.,PTM:Activated by phosphorylation on Ser/Thr.,similarity:Belongs to the protein kinase superfamily. STE Ser/Thr protein kinase family. MAP kinase kinase subfamily.,similarity:Contains 1 protein kinase domain.,tissue specificity:Ubiquitous; with highest level of expression in skeletal muscle. Isoform 3 is found at low levels in placenta, fetal liver, and skeletal muscle.,</u> |
| <b>Subcellular Location :</b> | <u>Nucleus. Cytoplasm .</u>   |
| <b>Expression :</b>           | <u>Ubiquitous; with highest level of expression in skeletal muscle. Isoform 3 is found at low levels in placenta, fetal liver, and skeletal muscle.</u>   |

---

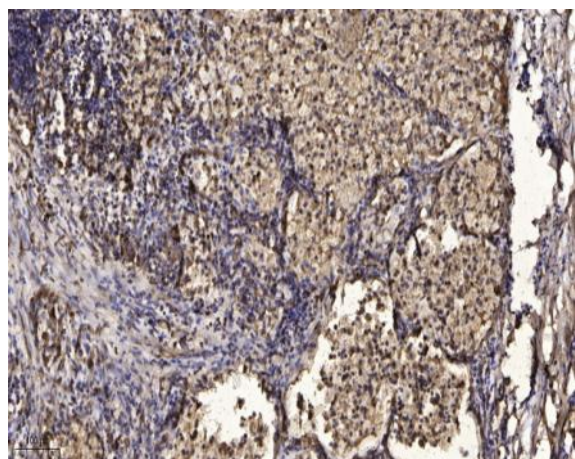
## Products Images



Western Blot analysis of 293 cells using MEK-7 Polyclonal Antibody



Western blot analysis of lysates from 293 cells treated with insulin 0.01U/ml 15', using MAP2K7 Antibody. The lane on the right is blocked with the synthesized peptide.



Immunohistochemical analysis of paraffin-embedded human Squamous cell carcinoma of lung. 1, Antibody was diluted at 1:200(4° overnight). 2, Tris-EDTA,pH9.0 was used for antigen retrieval. 3,Secondary antibody was diluted at 1:200(room temperature, 45min).