

NIM1 Polyclonal Antibody

Catalog No :	YT3128
Reactivity :	Human;Mouse
Applications :	WB;ELISA
Target :	NIM1
Gene Name :	NIM1
Protein Name :	Serine/threonine-protein kinase NIM1
Human Gene Id :	167359
Human Swiss Prot No :	Q8IY84
Mouse Gene Id :	245269
Mouse Swiss Prot No :	Q8BHI9
Immunogen :	The antiserum was produced against synthesized peptide derived from human NIM1. AA range:347-396
Specificity :	NIM1 Polyclonal Antibody detects endogenous levels of NIM1 protein.
Formulation :	Liquid in PBS containing 50% glycerol, 0.5% BSA and 0.02% sodium azide.
Source :	Polyclonal, Rabbit,IgG
Dilution :	WB 1:500 - 1:2000. ELISA: 1:10000. Not yet tested in other applications.
Purification :	The antibody was affinity-purified from rabbit antiserum by affinity-chromatography using epitope-specific immunogen.
Concentration :	1 mg/ml
Storage Stability :	-15°C to -25°C/1 year(Do not lower than -25°C)

Molecularweight : 50kD

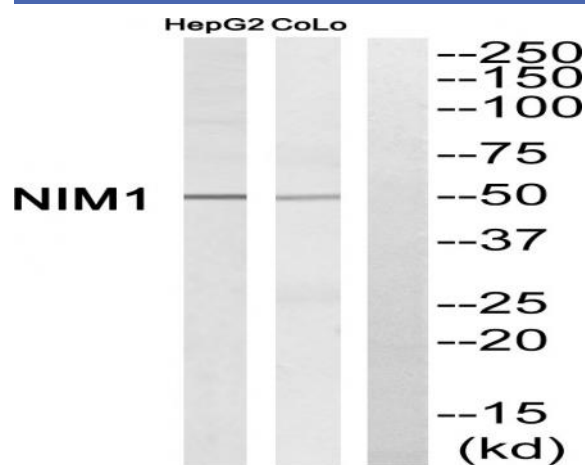
Background : catalytic activity:ATP + a protein = ADP + a phosphoprotein.,cofactor:Magnesium.,enzyme regulation:Activated by phosphorylation at Thr-229, probably by autophosphorylation.,similarity:Belongs to the protein kinase superfamily. CAMK Ser/Thr protein kinase family.,similarity:Contains 1 protein kinase domain.,

Function : catalytic activity:ATP + a protein = ADP + a phosphoprotein.,cofactor:Magnesium.,enzyme regulation:Activated by phosphorylation at Thr-229, probably by autophosphorylation.,similarity:Belongs to the protein kinase superfamily. CAMK Ser/Thr protein kinase family.,similarity:Contains 1 protein kinase domain.,

Subcellular Location : nucleus,cytoplasm,integral component of membrane,

Expression : Brain,

Products Images



Western blot analysis of NIM1 Antibody. The lane on the right is blocked with the NIM1 peptide.