

Sin3B Polyclonal Antibody

Catalog No :	YT2898
Reactivity :	Human;Mouse
Applications :	WB;ELISA;IHC
Target :	Sin3B
Gene Name :	SIN3B
Protein Name :	Paired amphipathic helix protein Sin3b
Human Gene Id :	23309
Human Swiss Prot No :	O75182
Mouse Swiss Prot No :	Q62141
Immunogen :	The antiserum was produced against synthesized peptide derived from human SIN3B. AA range:221-270
Specificity :	Sin3B Polyclonal Antibody detects endogenous levels of Sin3B protein.
Formulation :	Liquid in PBS containing 50% glycerol, 0.5% BSA and 0.02% sodium azide.
Source :	Polyclonal, Rabbit,IgG
Dilution :	WB 1:500-2000;IHC 1:50-300; ELISA 2000-20000
Purification :	The antibody was affinity-purified from rabbit antiserum by affinity-chromatography using epitope-specific immunogen.
Concentration :	1 mg/ml
Storage Stability :	-15°C to -25°C/1 year(Do not lower than -25°C)
Observed Band :	130kD

Background : function:Acts as a transcriptional repressor. Interacts with MXI1 to repress MYC responsive genes and antagonize MYC oncogenic activities. Interacts with MAD-MAX heterodimers by binding to MAD. The heterodimer then represses transcription by tethering SIN3B to DNA. Also forms a complex with FOXK1 which represses transcription.,similarity:Contains 3 PAH (paired amphipathic helix) repeats.,subunit:Interacts with FOXK1/MNF, MXI, MAD, NCOR1 and SAP30. Interaction with SDS3 enhances the interaction with HDAC1 to form a complex. Interacts with MAD3, MAD4, MAEL, REST and SETDB1 (By similarity). Interacts with HCFC1.,

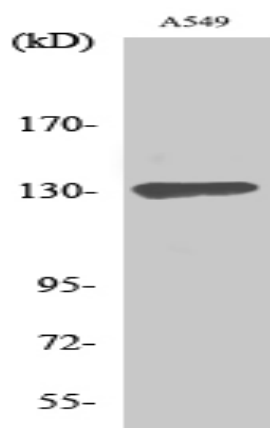
Function : function:Acts as a transcriptional repressor. Interacts with MXI1 to repress MYC responsive genes and antagonize MYC oncogenic activities. Interacts with MAD-MAX heterodimers by binding to MAD. The heterodimer then represses transcription by tethering SIN3B to DNA. Also forms a complex with FOXK1 which represses transcription.,similarity:Contains 3 PAH (paired amphipathic helix) repeats.,subunit:Interacts with FOXK1/MNF, MXI, MAD, NCOR1 and SAP30. Interaction with SDS3 enhances the interaction with HDAC1 to form a complex. Interacts with MAD3, MAD4, MAEL, REST and SETDB1 (By similarity). Interacts with HCFC1.,

Subcellular Location : Nucleus .

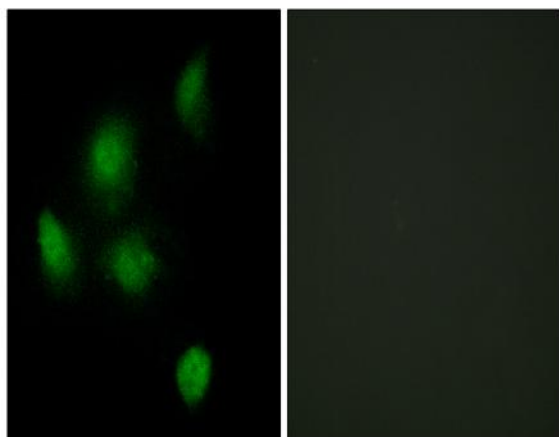
Location :

Expression : Brain,Duodenum,Lung,Skin,

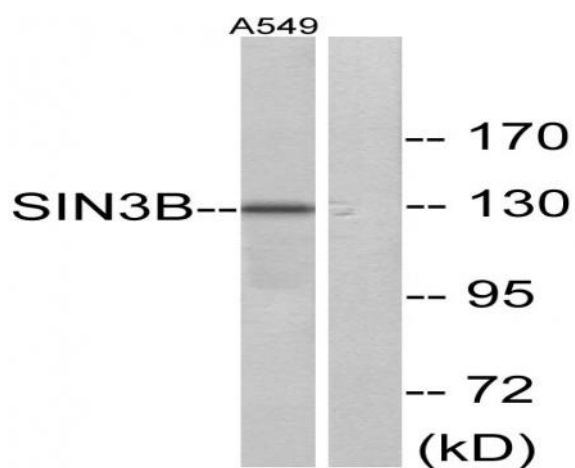
Products Images



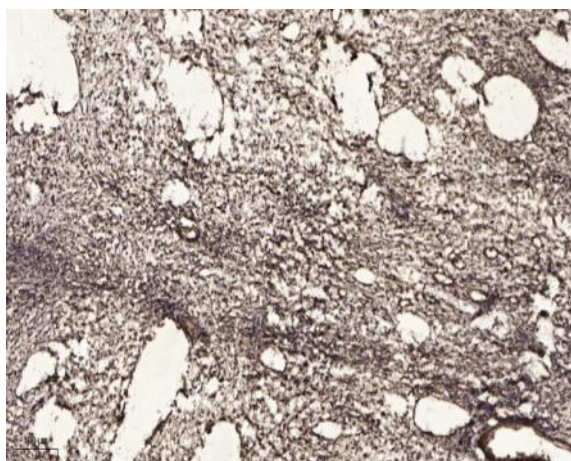
Western Blot analysis of various cells using Sin3B Polyclonal Antibody



Immunofluorescence analysis of HeLa cells, using SIN3B Antibody. The picture on the right is blocked with the synthesized peptide.



Western blot analysis of lysates from A549 cells, using SIN3B Antibody. The lane on the right is blocked with the synthesized peptide.



Immunohistochemical analysis of paraffin-embedded human oophoroma. 1, Antibody was diluted at 1:200(4° overnight). 2, Tris-EDTA,pH9.0 was used for antigen retrieval. 3,Secondary antibody was diluted at 1:200(room temperature, 45min).