

## MCM4 Polyclonal Antibody

<b>Catalog No :</b>	YT2681
<b>Reactivity :</b>	Human;Mouse
<b>Applications :</b>	WB;IHC;IF;ELISA
<b>Target :</b>	MCM4
<b>Fields :</b>	>>DNA replication;>>Cell cycle
<b>Gene Name :</b>	MCM4
<b>Protein Name :</b>	DNA replication licensing factor MCM4
<b>Human Gene Id :</b>	4173
<b>Human Swiss Prot No :</b>	P33991
<b>Mouse Gene Id :</b>	17217
<b>Mouse Swiss Prot No :</b>	P49717
<b>Immunogen :</b>	The antiserum was produced against synthesized peptide derived from human MCM4. AA range:20-69
<b>Specificity :</b>	MCM4 Polyclonal Antibody detects endogenous levels of MCM4 protein.
<b>Formulation :</b>	Liquid in PBS containing 50% glycerol, 0.5% BSA and 0.02% sodium azide.
<b>Source :</b>	Polyclonal, Rabbit,IgG
<b>Dilution :</b>	WB 1:500 - 1:2000. IHC 1:100 - 1:300. ELISA: 1:20000.. IF 1:50-200
<b>Purification :</b>	The antibody was affinity-purified from rabbit antiserum by affinity-chromatography using epitope-specific immunogen.
<b>Concentration :</b>	1 mg/ml

**Storage Stability :** -15°C to -25°C/1 year(Do not lower than -25°C)

**Observed Band :** 96kD

**Cell Pathway :** DNA replication;Cell\_Cycle\_G1S;Cell\_Cycle\_G2M\_DNA;

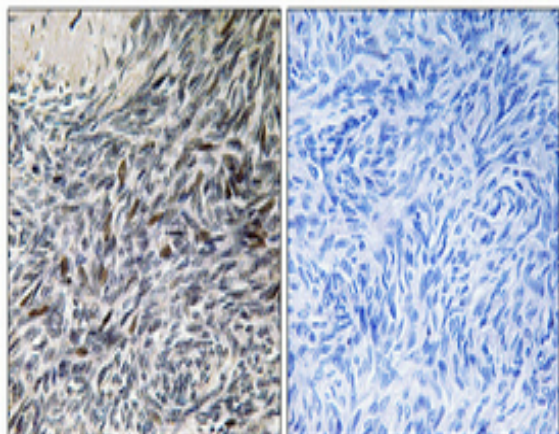
**Background :** The protein encoded by this gene is one of the highly conserved mini-chromosome maintenance proteins (MCM) that are essential for the initiation of eukaryotic genome replication. The hexameric protein complex formed by MCM proteins is a key component of the pre-replication complex (pre\_RC) and may be involved in the formation of replication forks and in the recruitment of other DNA replication related proteins. The MCM complex consisting of this protein and MCM2, 6 and 7 proteins possesses DNA helicase activity, and may act as a DNA unwinding enzyme. The phosphorylation of this protein by CDC2 kinase reduces the DNA helicase activity and chromatin binding of the MCM complex. This gene is mapped to a region on the chromosome 8 head-to-head next to the PRKDC/DNA-PK, a DNA-activated protein kinase involved in the repair of DNA double-strand breaks. Alternatively spliced transcri

**Function :** function:Involved in the control of DNA replication.,similarity:Belongs to the MCM family.,similarity:Contains 1 MCM domain.,

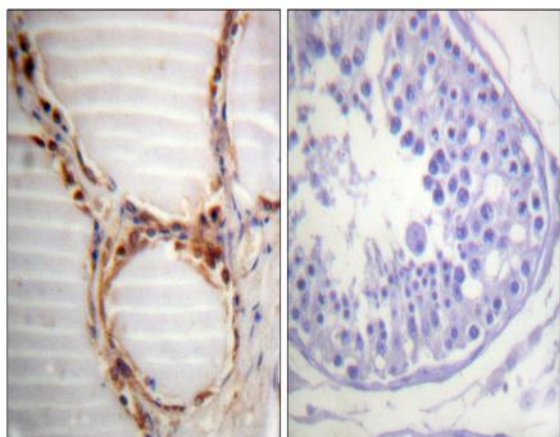
**Subcellular Location :** Nucleus . Chromosome . Associated with chromatin before the formation of nuclei and detaches from it as DNA replication progresses. .

**Expression :** Cervix,Epithelium,Testis,

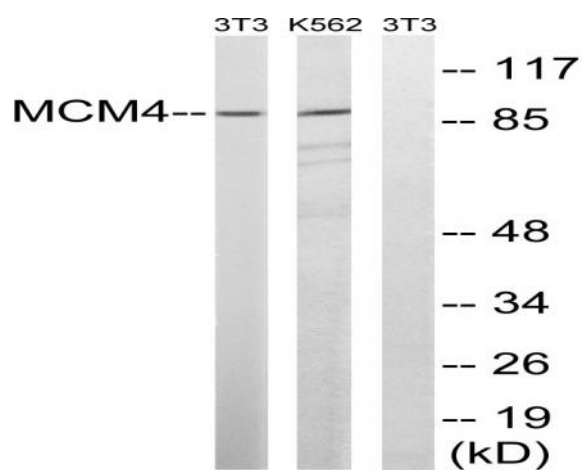
## Products Images



Immunohistochemical analysis of paraffin-embedded Human ovary. Antibody was diluted at 1:100(4° overnight). High-pressure and temperature Tris-EDTA,pH8.0 was used for antigen retrieval. Negative contrl (right) obtaned from antibody was pre-absorbed by immunogen peptide.



Immunohistochemistry analysis of paraffin-embedded human testis tissue, using MCM4 Antibody. The picture on the right is blocked with the synthesized peptide.



Western blot analysis of lysates from NIH/3T3 and K562 cells, using MCM4 Antibody. The lane on the right is blocked with the synthesized peptide.