

Mucin 13 Polyclonal Antibody

Catalog No :	YT2921
Reactivity :	Human;Rat;Mouse;
Applications :	WB;IHC;IF;ELISA
Target :	Mucin 13
Gene Name :	MUC13
Protein Name :	Mucin-13
Human Gene Id :	56667
Human Swiss Prot No :	Q9H3R2
Mouse Swiss Prot No :	P19467
Immunogen :	The antiserum was produced against synthesized peptide derived from human MUC13. AA range:421-470
Specificity :	Mucin 13 Polyclonal Antibody detects endogenous levels of Mucin 13 protein.
Formulation :	Liquid in PBS containing 50% glycerol, 0.5% BSA and 0.02% sodium azide.
Source :	Polyclonal, Rabbit,IgG
Dilution :	WB 1:500 - 1:2000. IHC 1:100 - 1:300. IF 1:200 - 1:1000. ELISA: 1:20000. Not yet tested in other applications.
Purification :	The antibody was affinity-purified from rabbit antiserum by affinity-chromatography using epitope-specific immunogen.
Concentration :	1 mg/ml
Storage Stability :	-15°C to -25°C/1 year(Do not lower than -25°C)
Observed Band :	50kD

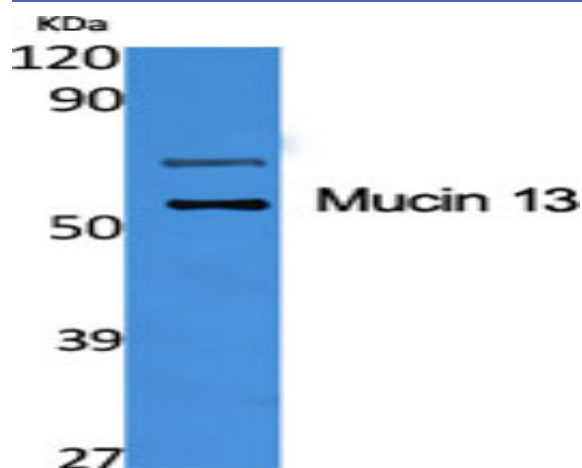
Background : Epithelial mucins, such as MUC13, are a family of secreted and cell surface glycoproteins expressed by ductal and glandular epithelial tissues (Williams et al., 2001 [PubMed 11278439]).[supplied by OMIM, Jul 2008],

Function : function:Epithelial and hemopoietic transmembrane mucin that may play a role in cell signaling.,PTM:Cleaved into two subunits, alpha and beta, probably between the first EGF domain and the SEA domain. Beta subunit contains the cytoplasmic tail and alpha subunit the extracellular tail. The homo-oligomerization into dimers is dependent on intrachain disulfide bonds.,PTM:Highly N-glycosylated.,similarity:Contains 1 SEA domain.,similarity:Contains 3 EGF-like domains.,subcellular location:Also exists as a soluble form.,subunit:Homodimer of beta subunits.,tissue specificity:Highly expressed in epithelial tissues, particularly those of the gastrointestinal and respiratory tracts, such as large intestine and trachea, followed by kidney, small intestine, appendix and stomach.,

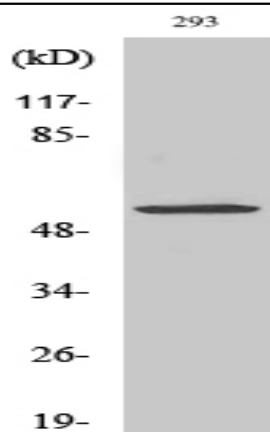
Subcellular Location : Cell membrane ; Single-pass type I membrane protein . Apical cell membrane . Secreted . Also exists as a soluble form.

Expression : Highly expressed in epithelial tissues, particularly those of the gastrointestinal and respiratory tracts, such as large intestine and trachea, followed by kidney, small intestine, appendix and stomach.

Products Images



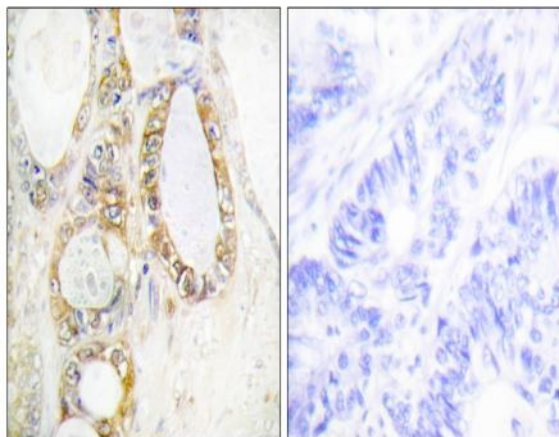
Western Blot analysis of various cells using Mucin 13 Polyclonal Antibody diluted at 1:1000



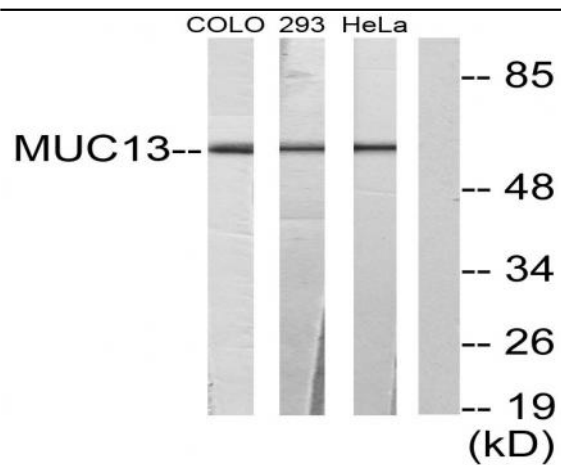
Western Blot analysis of COLO205 cells using Mucin 13 Polyclonal Antibody diluted at 1:1000



Immunofluorescence analysis of HepG2 cells, using MUC13 Antibody. The picture on the right is blocked with the synthesized peptide.



Immunohistochemistry analysis of paraffin-embedded human colon carcinoma tissue, using MUC13 Antibody. The picture on the right is blocked with the synthesized peptide.



Western blot analysis of lysates from 293, HeLa, and COLO205 cells, using MUC13 Antibody. The lane on the right is blocked with the synthesized peptide.