

**MAST4 Polyclonal Antibody**

<b>Catalog No :</b>	YT2660
<b>Reactivity :</b>	Human;Mouse
<b>Applications :</b>	WB;IHC;IF;ELISA
<b>Target :</b>	MAST4
<b>Gene Name :</b>	MAST4
<b>Protein Name :</b>	Microtubule-associated serine/threonine-protein kinase 4
<b>Human Gene Id :</b>	375449
<b>Human Swiss Prot No :</b>	O15021
<b>Mouse Gene Id :</b>	328329
<b>Mouse Swiss Prot No :</b>	Q811L6
<b>Immunogen :</b>	The antiserum was produced against synthesized peptide derived from human MAST4. AA range:251-300
<b>Specificity :</b>	MAST4 Polyclonal Antibody detects endogenous levels of MAST4 protein.
<b>Formulation :</b>	Liquid in PBS containing 50% glycerol, 0.5% BSA and 0.02% sodium azide.
<b>Source :</b>	Polyclonal, Rabbit,IgG
<b>Dilution :</b>	WB 1:500 - 1:2000. IHC 1:100 - 1:300. IF 1:200 - 1:1000. ELISA: 1:5000. Not yet tested in other applications.
<b>Purification :</b>	The antibody was affinity-purified from rabbit antiserum by affinity-chromatography using epitope-specific immunogen.
<b>Concentration :</b>	1 mg/ml
<b>Storage Stability :</b>	-15°C to -25°C/1 year(Do not lower than -25°C)

**Observed Band :** 36kD

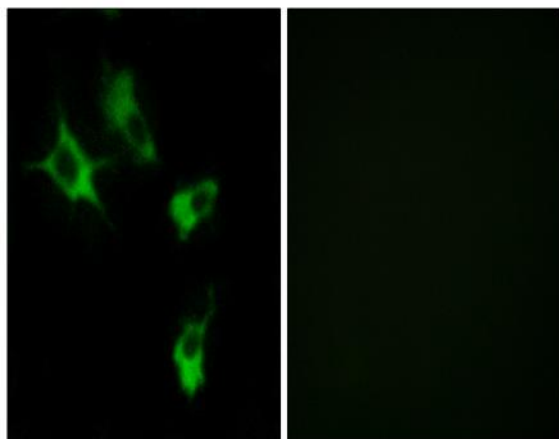
**Background :** This gene encodes a member of the microtubule-associated serine/threonine protein kinases. The proteins in this family contain a domain that gives the kinase the ability to determine its own scaffold to control the effects of their kinase activities. Alternative splicing results in multiple transcript variants encoding different isoforms. [provided by RefSeq, Mar 2014],

**Function :** catalytic activity:ATP + a protein = ADP + a phosphoprotein.,caution:The sequence shown here is derived from an Ensembl automatic analysis pipeline and should be considered as preliminary data.,cofactor:Magnesium.,PTM:Phosphorylated upon DNA damage, probably by ATM or ATR.,similarity:Belongs to the protein kinase superfamily. AGC Ser/Thr protein kinase family.,similarity:Contains 1 AGC-kinase C-terminal domain.,similarity:Contains 1 PDZ (DHR) domain.,similarity:Contains 1 protein kinase domain.,tissue specificity:Highly expressed in most normal human tissues, with an exception of in testis, small intestine, colon and peripheral blood leukocyte.,

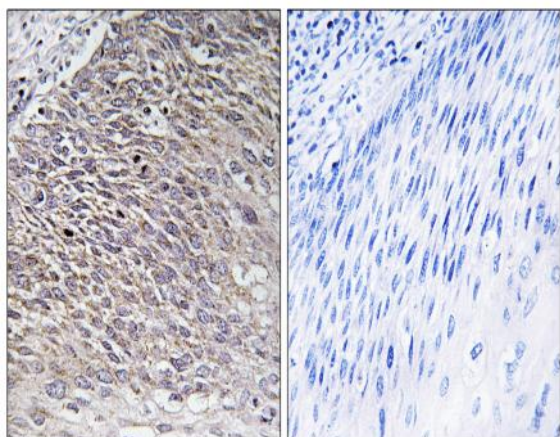
**Subcellular Location :** Cytoplasm .

**Expression :** Highly expressed in most normal human tissues, with an exception of in testis, small intestine, colon and peripheral blood leukocyte.

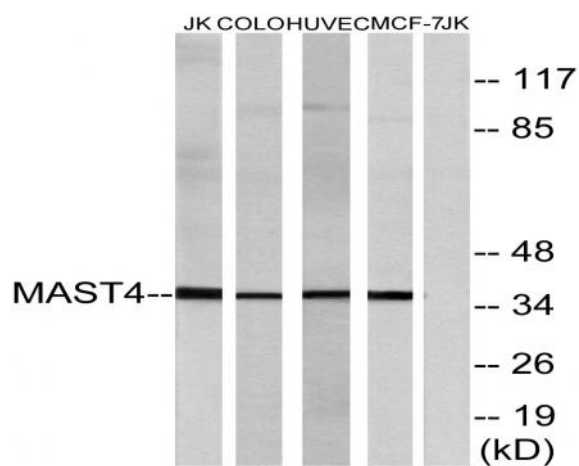
## Products Images



Immunofluorescence analysis of COS7 cells, using MAST4 Antibody. The picture on the right is blocked with the synthesized peptide.



Immunohistochemistry analysis of paraffin-embedded human testis tissue, using MAST4 Antibody. The picture on the right is blocked with the synthesized peptide.



Western blot analysis of lysates from Jurkat, COLO, HUVEC, and MCF-7 cells, using MAST4 Antibody. The lane on the right is blocked with the synthesized peptide.



Western blot analysis of the lysates from HT-29 cells using MAST4 antibody.