

MAST3 Polyclonal Antibody

Catalog No :	YT2659
Reactivity :	Human;Mouse
Applications :	WB;ELISA
Target :	MAST3
Gene Name :	MAST3
Protein Name :	Microtubule-associated serine/threonine-protein kinase 3
Human Gene Id :	23031
Human Swiss Prot No :	O60307
Mouse Gene Id :	546071
Mouse Swiss Prot No :	Q3U214
Immunogen :	The antiserum was produced against synthesized peptide derived from human MAST3. AA range:1031-1080
Specificity :	MAST3 Polyclonal Antibody detects endogenous levels of MAST3 protein.
Formulation :	Liquid in PBS containing 50% glycerol, 0.5% BSA and 0.02% sodium azide.
Source :	Polyclonal, Rabbit,IgG
Dilution :	WB 1:500 - 1:2000. ELISA: 1:10000. Not yet tested in other applications.
Purification :	The antibody was affinity-purified from rabbit antiserum by affinity-chromatography using epitope-specific immunogen.
Concentration :	1 mg/ml
Storage Stability :	-15°C to -25°C/1 year(Do not lower than -25°C)

Observed Band : 143kD

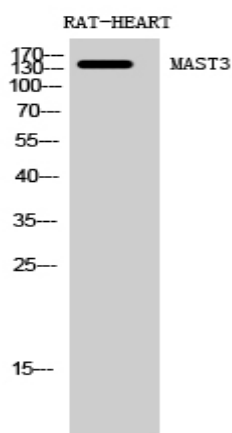
Background : catalytic activity:ATP + a protein = ADP + a phosphoprotein.,caution:It is uncertain whether Met-1, Met-171 or Met-172 is the initiator.,cofactor:Magnesium.,similarity:Belongs to the protein kinase superfamily. AGC Ser/Thr protein kinase family.,similarity:Contains 1 AGC-kinase C-terminal domain.,similarity:Contains 1 PDZ (DHR) domain.,similarity:Contains 1 protein kinase domain.,subunit:Interacts with PTEN.,

Function : catalytic activity:ATP + a protein = ADP + a phosphoprotein.,caution:It is uncertain whether Met-1, Met-171 or Met-172 is the initiator.,cofactor:Magnesium.,similarity:Belongs to the protein kinase superfamily. AGC Ser/Thr protein kinase family.,similarity:Contains 1 AGC-kinase C-terminal domain.,similarity:Contains 1 PDZ (DHR) domain.,similarity:Contains 1 protein kinase domain.,subunit:Interacts with PTEN.,

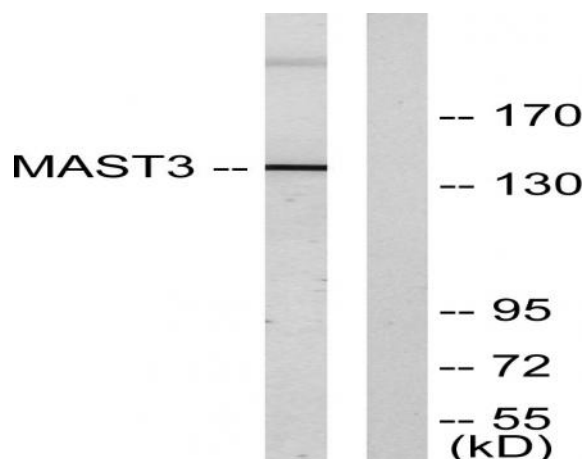
Subcellular Location : intracellular,

Expression : Brain,

Products Images



Western Blot analysis of RAT-HEART cells using MAST3 Polyclonal Antibody diluted at 1:500



Western blot analysis of lysates from Jurkat cells, using MAST3 Antibody. The lane on the right is blocked with the synthesized peptide.