

**CD2 Monoclonal Antibody(3F3)**

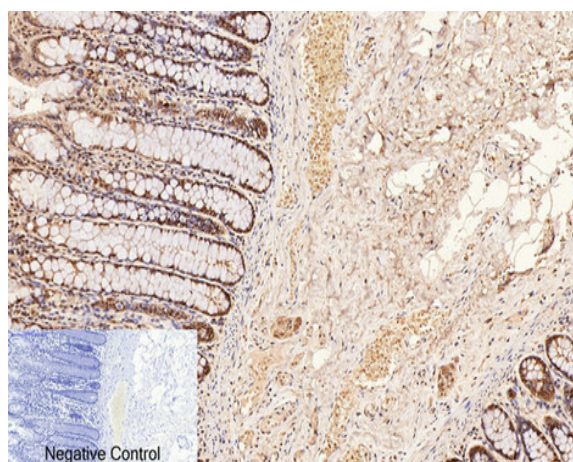
<b>Catalog No :</b>	YM3069
<b>Reactivity :</b>	Human;Mouse;Rat
<b>Applications :</b>	IHC;IF
<b>Target :</b>	CD2
<b>Fields :</b>	>>Cell adhesion molecules;>>Hematopoietic cell lineage
<b>Gene Name :</b>	CD2
<b>Protein Name :</b>	T-cell surface antigen CD2
<b>Human Gene Id :</b>	914
<b>Human Swiss Prot No :</b>	P06729
<b>Mouse Gene Id :</b>	12481
<b>Mouse Swiss Prot No :</b>	P08920
<b>Rat Gene Id :</b>	497761
<b>Rat Swiss Prot No :</b>	P08921
<b>Immunogen :</b>	Synthetic Peptide of CD2
<b>Specificity :</b>	The antibody detects endogenous CD2 proteins.
<b>Formulation :</b>	PBS, pH 7.4, containing 0.5%BSA, 0.02% sodium azide as Preservative and 50% Glycerol.
<b>Source :</b>	Monoclonal, Mouse
<b>Dilution :</b>	IHC 1:200. IF 1:50-200

---

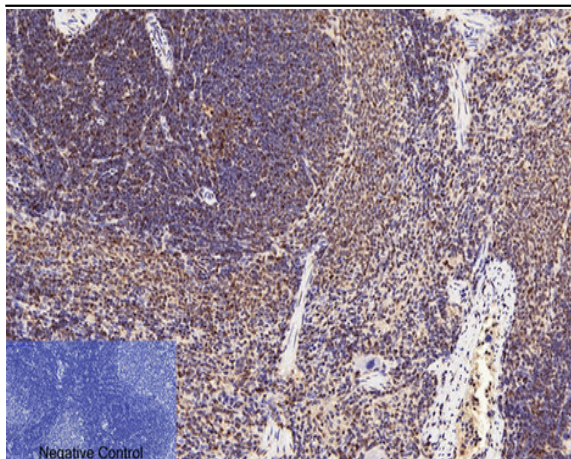
<b>Purification :</b>	The antibody was affinity-purified from mouse ascites by affinity-chromatography using specific immunogen.
<b>Storage Stability :</b>	-15°C to -25°C/1 year(Do not lower than -25°C)
<b>Molecularweight :</b>	39kD
<b>Cell Pathway :</b>	Cell adhesion molecules (CAMs);Hematopoietic cell lineage;
<b>Background :</b>	The protein encoded by this gene is a surface antigen found on all peripheral blood T-cells. The encoded protein interacts with LFA3 (CD58) on antigen presenting cells to optimize immune recognition. A locus control region (LCR) has been found in the 3' flanking sequence of this gene. [provided by RefSeq, Jun 2016],
<b>Function :</b>	function:CD2 interacts with lymphocyte function-associated antigen (LFA-3) and CD48/BCM1 to mediate adhesion between T-cells and other cell types. CD2 is implicated in the triggering of T-cells, the cytoplasmic domain is implicated in the signaling function.,online information:CD2 entry,similarity:Contains 1 Ig-like C2-type (immunoglobulin-like) domain.,similarity:Contains 1 Ig-like V-type (immunoglobulin-like) domain.,subunit:Interacts with CD2AP (By similarity). Interacts with PSTPIP1.,
<b>Subcellular Location :</b>	Cell membrane ; Single-pass type I membrane protein .
<b>Expression :</b>	Expressed in natural killer cells (at protein level).

---

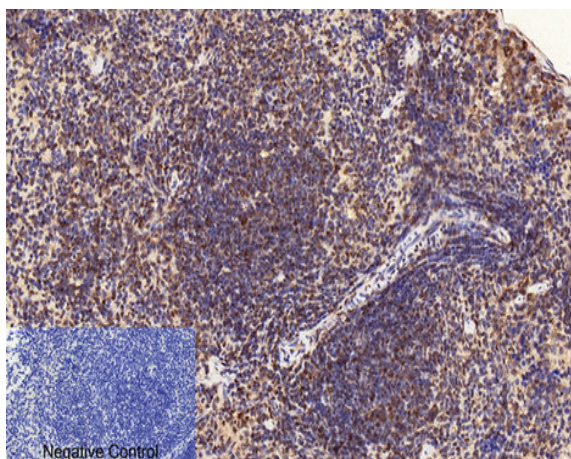
## Products Images



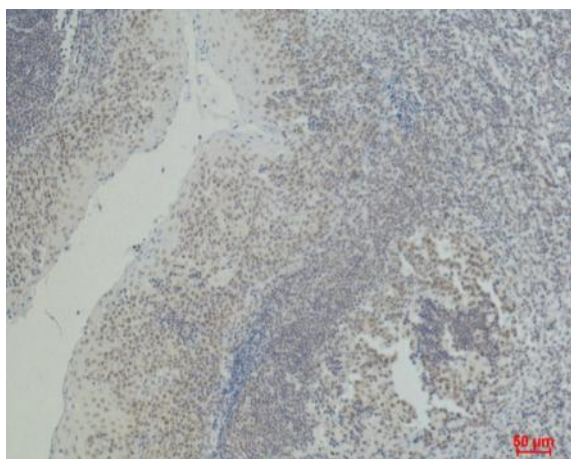
Immunohistochemical analysis of paraffin-embedded Human colon tissue. 1,CD2 Monoclonal Antibody(3F3) was diluted at 1:200(4°C,overnight). 2, Sodium citrate pH 6.0 was used for antibody retrieval(>98°C,20min). 3,Secondary antibody was diluted at 1:200(room temperature, 30min). Negative control was used by secondary antibody only.



Immunohistochemical analysis of paraffin-embedded Rat-spleen tissue. 1, CD2 Monoclonal Antibody(3F3) was diluted at 1:200(4 °C, overnight). 2, Sodium citrate pH 6.0 was used for antibody retrieval(>98 °C, 20min). 3, Secondary antibody was diluted at 1:200(room temperature, 30min). Negative control was used by secondary antibody only.



Immunohistochemical analysis of paraffin-embedded Mouse-spleen tissue. 1, CD2 Monoclonal Antibody(3F3) was diluted at 1:200(4 °C, overnight). 2, Sodium citrate pH 6.0 was used for antibody retrieval(>98 °C, 20min). 3, Secondary antibody was diluted at 1:200(room temperature, 30min). Negative control was used by secondary antibody only.



Immunohistochemical analysis of paraffin-embedded Human Tonsil Carcinoma using CD2 Mouse mAb diluted at 1:500.