

MARCH3 Polyclonal Antibody

Catalog No :	YT2644
Reactivity :	Human;Mouse;Rat;Monkey
Applications :	WB;IHC;IF;ELISA
Target :	MARCH3
Gene Name :	MARCH3
Protein Name :	E3 ubiquitin-protein ligase MARCH3
Human Gene Id :	115123
Human Swiss Prot No :	Q86UD3
Mouse Gene Id :	320253
Mouse Swiss Prot No :	Q8BRX9
Rat Gene Id :	364878
Rat Swiss Prot No :	Q5XIE5
Immunogen :	The antiserum was produced against synthesized peptide derived from human MARCH3. AA range:111-160
Specificity :	MARCH3 Polyclonal Antibody detects endogenous levels of 40605 protein.
Formulation :	Liquid in PBS containing 50% glycerol, 0.5% BSA and 0.02% sodium azide.
Source :	Polyclonal, Rabbit,IgG
Dilution :	WB 1:500 - 1:2000. IHC 1:100 - 1:300. ELISA: 1:40000.. IF 1:50-200
Purification :	The antibody was affinity-purified from rabbit antiserum by affinity-chromatography using epitope-specific immunogen.

Concentration : 1 mg/ml

Storage Stability : -15°C to -25°C/1 year(Do not lower than -25°C)

Observed Band : 29kD

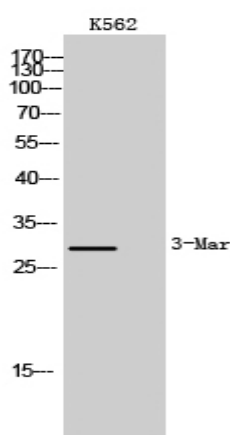
Background : This gene encodes a member of the membrane-associated RING-CH (MARCH) family. The encoded protein is an E3 ubiquitin-protein ligase that may be involved in regulation of the endosomal transport pathway. [provided by RefSeq, Mar 2013],

Function : domain:The RING-CH-type zinc finger domain is required for E3 ligase activity.,function:E3 ubiquitin-protein ligase which may be involved in endosomal trafficking. E3 ubiquitin ligases accept ubiquitin from an E2 ubiquitin-conjugating enzyme in the form of a thioester and then directly transfer the ubiquitin to targeted substrates.,pathway:Protein modification; protein ubiquitination.,similarity:Contains 1 RING-CH-type zinc finger.,subunit:Interacts with MARCH2 and STX6.,

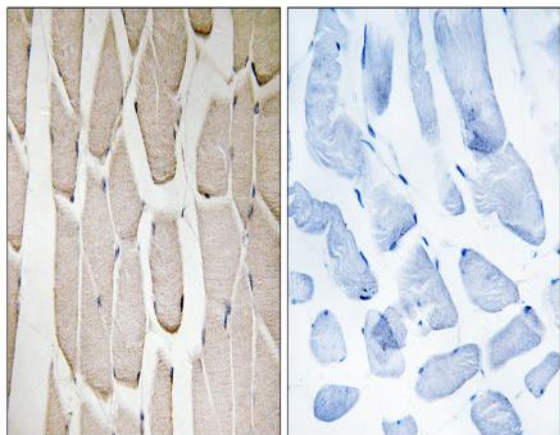
Subcellular Location : Cytoplasmic vesicle membrane ; Multi-pass membrane protein . Early endosome membrane ; Multi-pass membrane protein .

Expression : Brain,Thalamus,

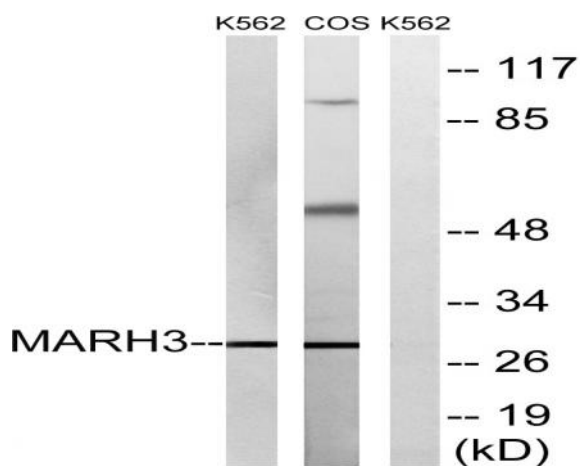
Products Images



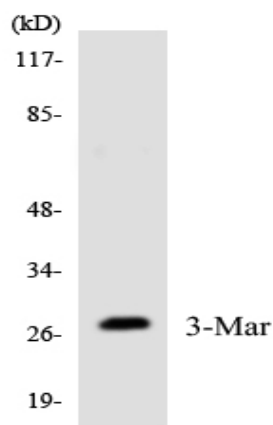
Western Blot analysis of K562 cells using MARCH3 Polyclonal Antibody



Immunohistochemistry analysis of paraffin-embedded human heart tissue, using MARCH3 Antibody. The picture on the right is blocked with the synthesized peptide.



Western blot analysis of lysates from K562 and COS7 cells, using MARCH3 Antibody. The lane on the right is blocked with the synthesized peptide.



Western blot analysis of the lysates from RAW264.7 cells using MARCH3 antibody.