

**MAPKAPK-2 Polyclonal Antibody**

<b>Catalog No :</b>	YT2640
<b>Reactivity :</b>	Human;Mouse;Rat;Monkey
<b>Applications :</b>	WB;IHC;IF;ELISA
<b>Target :</b>	MAPKAPK2
<b>Fields :</b>	>>MAPK signaling pathway;>>Cellular senescence;>>VEGF signaling pathway;>>C-type lectin receptor signaling pathway;>>Neurotrophin signaling pathway;>>Kaposi sarcoma-associated herpesvirus infection;>>Viral carcinogenesis
<b>Gene Name :</b>	MAPKAPK2
<b>Protein Name :</b>	MAP kinase-activated protein kinase 2
<b>Human Gene Id :</b>	9261
<b>Human Swiss Prot No :</b>	P49137
<b>Mouse Gene Id :</b>	17164
<b>Mouse Swiss Prot No :</b>	P49138
<b>Immunogen :</b>	The antiserum was produced against synthesized peptide derived from human MAPKAPK2. AA range:238-287
<b>Specificity :</b>	MAPKAPK-2 Polyclonal Antibody detects endogenous levels of MAPKAPK-2 protein.
<b>Formulation :</b>	Liquid in PBS containing 50% glycerol, 0.5% BSA and 0.02% sodium azide.
<b>Source :</b>	Polyclonal, Rabbit,IgG
<b>Dilution :</b>	WB 1:500 - 1:2000. IHC 1:100 - 1:300. ELISA: 1:5000.. IF 1:50-200
<b>Purification :</b>	The antibody was affinity-purified from rabbit antiserum by affinity-

chromatography using epitope-specific immunogen.

---

**Concentration :** 1 mg/ml

---

**Storage Stability :** -15°C to -25°C/1 year(Do not lower than -25°C)

---

**Observed Band :** 46kD

---

**Cell Pathway :** MAPK\_ERK\_Growth;MAPK\_G\_Protein;VEGF;Neurotrophin;

---

**Background :** This gene encodes a member of the Ser/Thr protein kinase family. This kinase is regulated through direct phosphorylation by p38 MAP kinase. In conjunction with p38 MAP kinase, this kinase is known to be involved in many cellular processes including stress and inflammatory responses, nuclear export, gene expression regulation and cell proliferation. Heat shock protein HSP27 was shown to be one of the substrates of this kinase in vivo. Two transcript variants encoding two different isoforms have been found for this gene. [provided by RefSeq, Jul 2008],

---

**Function :** catalytic activity:ATP + a protein = ADP + a phosphoprotein.,enzyme regulation:Seems to be activated by two distinct pathways: the first involves the stimulation of p42/p44 MAPK by growth factors, the second, triggered by stress and heat shock, depends on the activation of MPK2 and upstream MAPKK/MAPKKK.,function:Its physiological substrate seems to be the small heat shock protein (HSP27/HSP25). In vitro can phosphorylate glycogen synthase at 'Ser-7' and tyrosine hydroxylase (on 'Ser-19' and 'Ser-40'). This kinase phosphorylates Ser in the peptide sequence, Hyd-X-R-X(2)-S, where Hyd is a large hydrophobic residue (By similarity). Mediates both ERK and p38 MAPK/MAPK14 dependent neutrophil responses. Participates in TNF alpha-stimulated exocytosis of secretory vesicles in neutrophils. Plays a role in phagocytosis-induced respiratory burst activity.,PTM:Phosphorylated and activated by MAP k

---

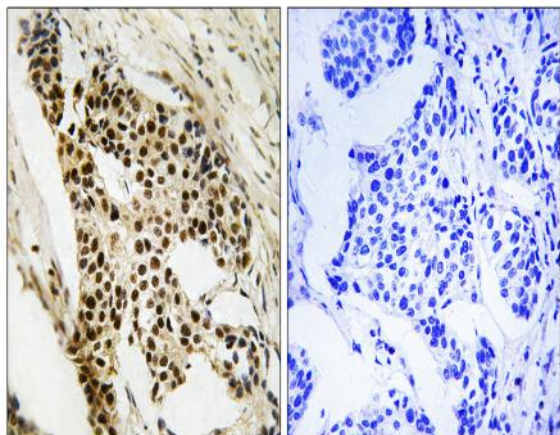
**Subcellular Location :** Cytoplasm . Nucleus . Phosphorylation and subsequent activation releases the autoinhibitory helix, resulting in the export from the nucleus into the cytoplasm.

---

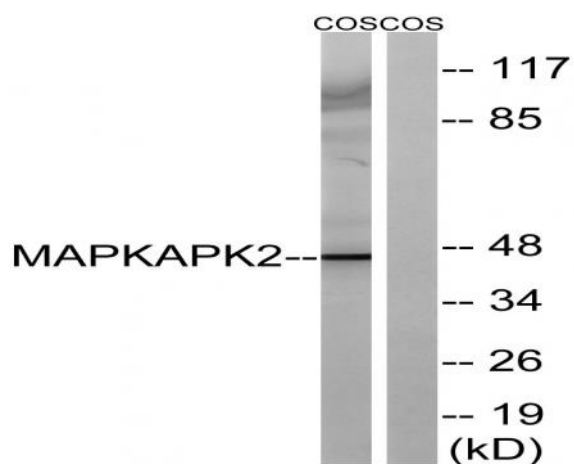
**Expression :** Expressed in all tissues examined.

---

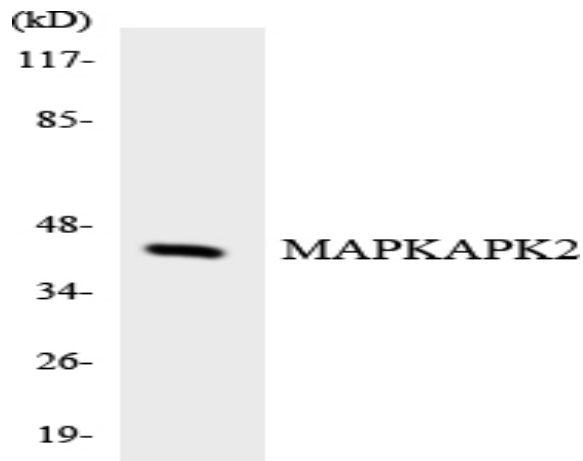
## Products Images



Immunohistochemistry analysis of paraffin-embedded human breast carcinoma tissue, using MAPKAPK2 Antibody. The picture on the right is blocked with the synthesized peptide.



Western blot analysis of lysates from COS cells, using MAPKAPK2 Antibody. The lane on the right is blocked with the synthesized peptide.



Western blot analysis of the lysates from HeLa cells using MAPKAPK2 antibody.