

## MAP-2 Polyclonal Antibody

<b>Catalog No :</b>	YT2636
<b>Reactivity :</b>	Human;Mouse;Rat
<b>Applications :</b>	WB;IHC;IF;ELISA
<b>Target :</b>	MAP-2
<b>Gene Name :</b>	MAP2
<b>Protein Name :</b>	Microtubule-associated protein 2
<b>Human Gene Id :</b>	4133
<b>Human Swiss Prot No :</b>	P11137
<b>Mouse Swiss Prot No :</b>	P20357
<b>Rat Swiss Prot No :</b>	P15146
<b>Immunogen :</b>	The antiserum was produced against synthesized peptide derived from human MAP-2. AA range:14-63
<b>Specificity :</b>	MAP-2 Polyclonal Antibody detects endogenous levels of MAP-2 protein.
<b>Formulation :</b>	Liquid in PBS containing 50% glycerol, 0.5% BSA and 0.02% sodium azide.
<b>Source :</b>	Polyclonal, Rabbit,IgG
<b>Dilution :</b>	WB 1:500 - 1:2000. IHC 1:100 - 1:300. ELISA: 1:40000.. IF 1:50-200
<b>Purification :</b>	The antibody was affinity-purified from rabbit antiserum by affinity-chromatography using epitope-specific immunogen.
<b>Concentration :</b>	1 mg/ml
<b>Storage Stability :</b>	-15°C to -25°C/1 year(Do not lower than -25°C)

---

**Observed Band :** 280kD

---

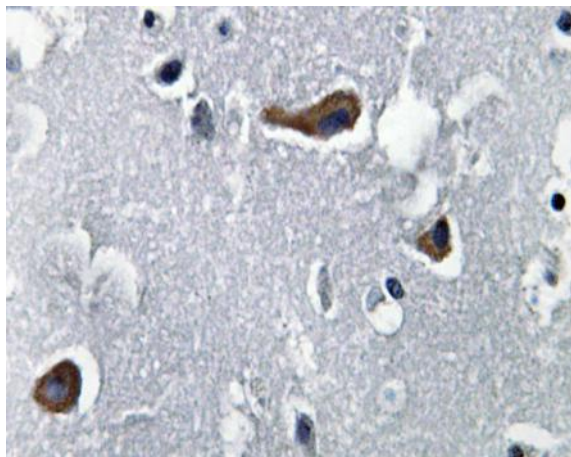
**Background :** This gene encodes a protein that belongs to the microtubule-associated protein family. The proteins of this family are thought to be involved in microtubule assembly, which is an essential step in neurogenesis. The products of similar genes in rat and mouse are neuron-specific cytoskeletal proteins that are enriched in dendrites, implicating a role in determining and stabilizing dendritic shape during neuron development. A number of alternatively spliced variants encoding distinct isoforms have been described. [provided by RefSeq, Jan 2010],

**Function :** alternative products:Additional isoforms seem to exist,function:The exact function of MAP2 is unknown but MAPs may stabilize the microtubules against depolymerization. They also seem to have a stiffening effect on microtubules.,PTM:MAP2A/c is phosphorylated. Phosphorylated upon DNA damage, probably by ATM or ATR.,similarity:Contains 3 Tau/MAP repeats.,similarity:Contains 4 Tau/MAP repeats.,

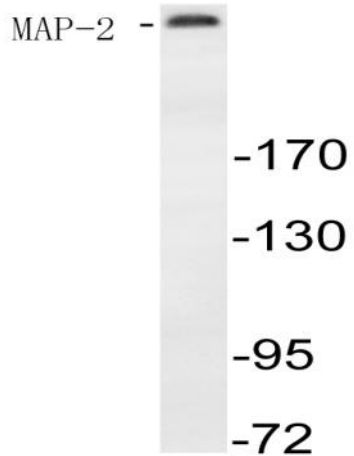
**Subcellular Location :** Cytoplasm, cytoskeleton . Cell projection, dendrite .

**Expression :** Brain,Brain cortex,Epithelium,Pancreas,Testis,

## Products Images



Immunohistochemistry analysis of MAP-2 antibody in paraffin-embedded human brain tissue.



Western blot analysis of lysate from mouse brain, using MAP-2 antibody.