

## MRP-S18A Polyclonal Antibody

<b>Catalog No :</b>	YT2877
<b>Reactivity :</b>	Human;Mouse;Rat
<b>Applications :</b>	IHC;IF;ELISA
<b>Target :</b>	MRP-S18A
<b>Fields :</b>	>>Ribosome
<b>Gene Name :</b>	MRPS18A
<b>Protein Name :</b>	28S ribosomal protein S18a mitochondrial
<b>Human Gene Id :</b>	55168
<b>Human Swiss Prot No :</b>	Q9NVS2
<b>Mouse Gene Id :</b>	68565
<b>Mouse Swiss Prot No :</b>	Q99N85
<b>Immunogen :</b>	The antiserum was produced against synthesized peptide derived from human MRPS18A. AA range:81-130
<b>Specificity :</b>	MRP-S18A Polyclonal Antibody detects endogenous levels of MRP-S18A protein.
<b>Formulation :</b>	Liquid in PBS containing 50% glycerol, 0.5% BSA and 0.02% sodium azide.
<b>Source :</b>	Polyclonal, Rabbit,IgG
<b>Dilution :</b>	IHC 1:100 - 1:300. ELISA: 1:40000.. IF 1:50-200
<b>Purification :</b>	The antibody was affinity-purified from rabbit antiserum by affinity-chromatography using epitope-specific immunogen.
<b>Concentration :</b>	1 mg/ml

**Storage Stability :** -15°C to -25°C/1 year (Do not lower than -25°C)

**Observed Band :** 27-30kD

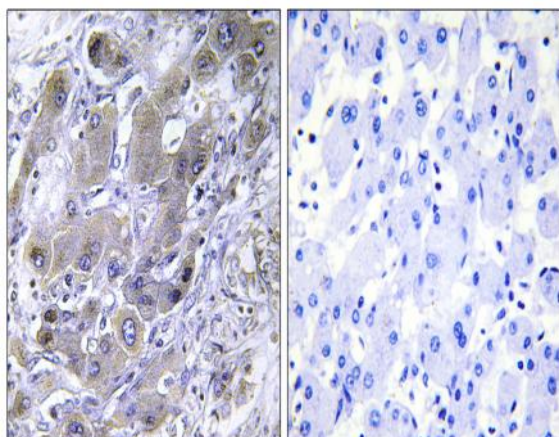
**Background :** Mammalian mitochondrial ribosomal proteins are encoded by nuclear genes and help in protein synthesis within the mitochondrion. Mitochondrial ribosomes (mitoribosomes) consist of a small 28S subunit and a large 39S subunit. They have an estimated 75% protein to rRNA composition compared to prokaryotic ribosomes, where this ratio is reversed. Another difference between mammalian mitoribosomes and prokaryotic ribosomes is that the latter contain a 5S rRNA. Among different species, the proteins comprising the mitoribosome differ greatly in sequence, and sometimes in biochemical properties, which prevents easy recognition by sequence homology. This gene encodes a 28S subunit protein that belongs to the ribosomal protein S18P family. The encoded protein is one of three that has significant sequence similarity to bacterial S18 proteins. The primary sequences of the three human mitochondria

**Function :** similarity:Belongs to the ribosomal protein S18P family.,subunit:Component of the mitochondrial ribosome small subunit (28S) which comprises a 12S rRNA and about 30 distinct proteins.,

**Subcellular Location :** Mitochondrion .

**Expression :** Prostate,

## Products Images



Immunohistochemistry analysis of paraffin-embedded human liver carcinoma tissue, using MRPS18A Antibody. The picture on the right is blocked with the synthesized peptide.