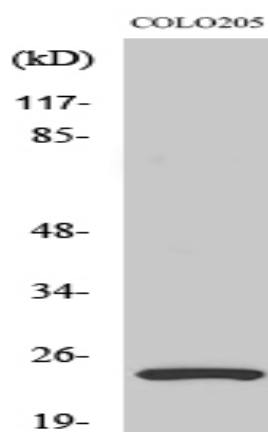


## LYPLA1 Polyclonal Antibody

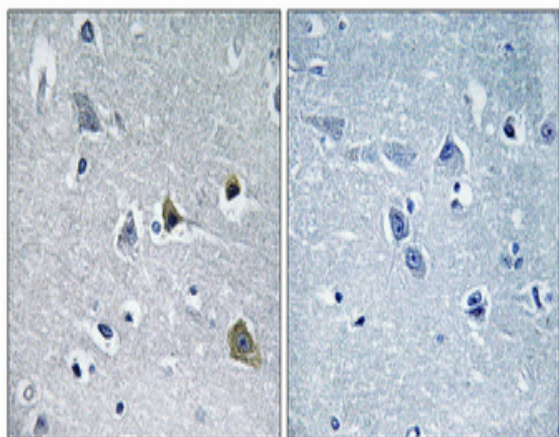
<b>Catalog No :</b>	YT2609
<b>Reactivity :</b>	Human;Mouse;Rat
<b>Applications :</b>	WB;IHC;IF;ELISA
<b>Target :</b>	LYPLA1
<b>Fields :</b>	>>Glycerophospholipid metabolism;>>Choline metabolism in cancer
<b>Gene Name :</b>	LYPLA1
<b>Protein Name :</b>	Acyl-protein thioesterase 1
<b>Human Gene Id :</b>	10434
<b>Human Swiss Prot No :</b>	O75608
<b>Mouse Gene Id :</b>	18777
<b>Mouse Swiss Prot No :</b>	P97823
<b>Rat Gene Id :</b>	25514
<b>Rat Swiss Prot No :</b>	P70470
<b>Immunogen :</b>	The antiserum was produced against synthesized peptide derived from human LYPLA1. AA range:51-100
<b>Specificity :</b>	LYPLA1 Polyclonal Antibody detects endogenous levels of LYPLA1 protein.
<b>Formulation :</b>	Liquid in PBS containing 50% glycerol, 0.5% BSA and 0.02% sodium azide.
<b>Source :</b>	Polyclonal, Rabbit,IgG
<b>Dilution :</b>	WB 1:500 - 1:2000. IHC 1:100 - 1:300. IF 1:200 - 1:1000. ELISA: 1:40000. Not yet tested in other applications.

<b>Purification :</b>	The antibody was affinity-purified from rabbit antiserum by affinity-chromatography using epitope-specific immunogen.
<b>Concentration :</b>	1 mg/ml
<b>Storage Stability :</b>	-15°C to -25°C/1 year(Do not lower than -25°C)
<b>Observed Band :</b>	25kD
<b>Cell Pathway :</b>	Glycerophospholipid metabolism;
<b>Background :</b>	This gene encodes a member of the alpha/beta hydrolase superfamily. The encoded protein functions as a homodimer, exhibiting both depalmitoylating as well as lysophospholipase activity, and may be involved in Ras localization and signaling. Alternate splicing results in multiple transcript variants. Pseudogenes of this gene have been defined on chromosomes 4, 6, and 7. [provided by RefSeq, Jul 2013],
<b>Function :</b>	catalytic activity:Palmitoyl-protein + H(2)O = palmitate + protein.,function:Hydrolyzes fatty acids from S-acylated cysteine residues in proteins such as trimeric G alpha proteins or HRAS. Also has low lysophospholipase activity.,similarity:Belongs to the AB hydrolase 2 family.,subunit:Homodimer.,
<b>Subcellular Location :</b>	Cytoplasm . Cell membrane . Nucleus membrane . Endoplasmic reticulum . Shows predominantly a cytoplasmic localization with a weak expression in the cell membrane, nuclear membrane and endoplasmic reticulum. .
<b>Expression :</b>	Platelets.

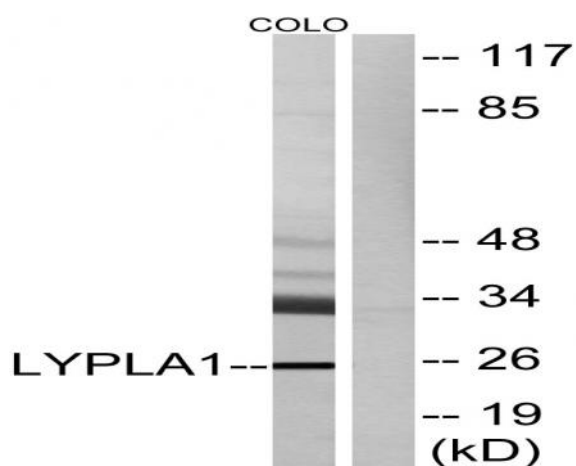
## Products Images



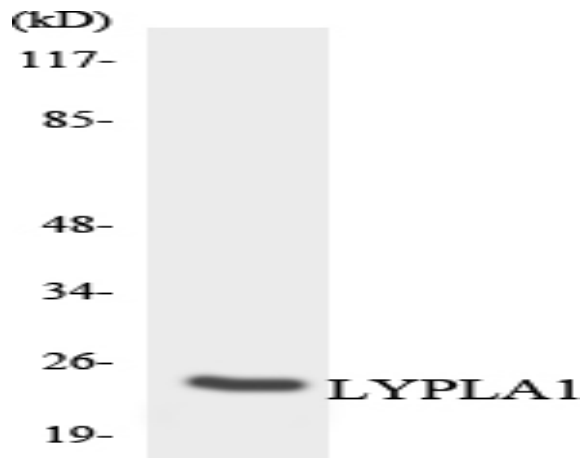
Western Blot analysis of various cells using LYPLA1 Polyclonal Antibody diluted at 1:2000



Immunohistochemical analysis of paraffin-embedded Human brain. Antibody was diluted at 1:100(4° overnight). High-pressure and temperature Tris-EDTA,pH8.0 was used for antigen retrieval. Negative contrl (right) obtained from antibody was pre-absorbed by immunogen peptide.



Western blot analysis of lysates from COLO cells, using LYPLA1 Antibody. The lane on the right is blocked with the synthesized peptide.



Western blot analysis of the lysates from HeLa cells using LYPLA1 antibody.