

LRRK1 Polyclonal Antibody

Catalog No :	YT2594
Reactivity :	Human;Mouse
Applications :	IHC;IF;ELISA
Target :	LRRK1
Gene Name :	LRRK1
Protein Name :	Leucine-rich repeat serine/threonine-protein kinase 1
Human Gene Id :	79705
Human Swiss Prot No :	Q38SD2
Mouse Swiss Prot No :	Q3UHC2
Immunogen :	The antiserum was produced against synthesized peptide derived from human LRRK1. AA range:361-410
Specificity :	LRRK1 Polyclonal Antibody detects endogenous levels of LRRK1 protein.
Formulation :	Liquid in PBS containing 50% glycerol, 0.5% BSA and 0.02% sodium azide.
Source :	Polyclonal, Rabbit,IgG
Dilution :	IHC 1:100 - 1:300. IF 1:200 - 1:1000. ELISA: 1:5000. Not yet tested in other applications.
Purification :	The antibody was affinity-purified from rabbit antiserum by affinity-chromatography using epitope-specific immunogen.
Concentration :	1 mg/ml
Storage Stability :	-15°C to -25°C/1 year(Do not lower than -25°C)
Molecularweight :	228kD

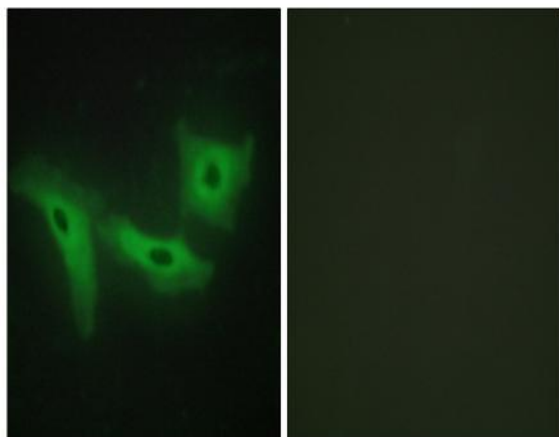
Background : catalytic activity:ATP + a protein = ADP + a phosphoprotein.,cofactor:Magnesium or manganese.,enzyme regulation:Binding of GTP stimulates kinase activity.,PTM:Autophosphorylated.,similarity:Belongs to the protein kinase superfamily. TKL Ser/Thr protein kinase family. ROCO subfamily.,similarity:Contains 1 protein kinase domain.,similarity:Contains 1 Roc domain.,similarity:Contains 11 LRR (leucine-rich) repeats.,similarity:Contains 4 ANK repeats.,

Function : catalytic activity:ATP + a protein = ADP + a phosphoprotein.,cofactor:Magnesium or manganese.,enzyme regulation:Binding of GTP stimulates kinase activity.,PTM:Autophosphorylated.,similarity:Belongs to the protein kinase superfamily. TKL Ser/Thr protein kinase family. ROCO subfamily.,similarity:Contains 1 protein kinase domain.,similarity:Contains 1 Roc domain.,similarity:Contains 11 LRR (leucine-rich) repeats.,similarity:Contains 4 ANK repeats.,

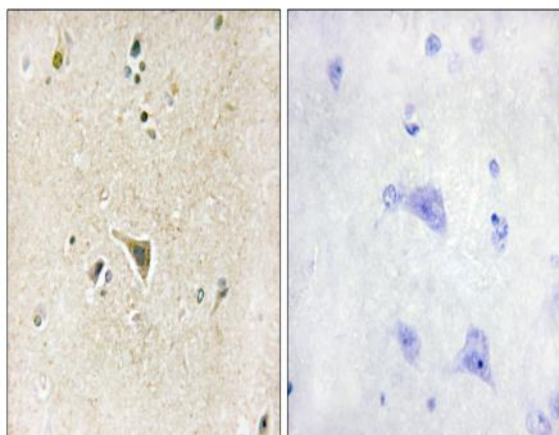
Subcellular Location : Cytoplasm .

Expression : Brain,Cervix,Lung,Macrophage,Pancreas,Skin,Spleen,

Products Images



Immunofluorescence analysis of HeLa cells, using LRRK1 Antibody. The picture on the right is blocked with the synthesized peptide.



Immunohistochemistry analysis of paraffin-embedded human brain tissue, using LRRK1 Antibody. The picture on the right is blocked with the synthesized peptide.