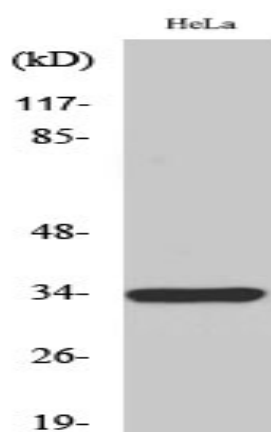


MRGE Polyclonal Antibody

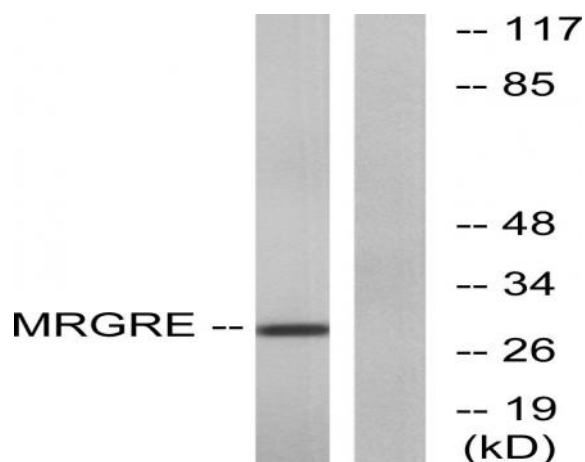
Catalog No :	YT2832
Reactivity :	Human;Mouse;Rat
Applications :	WB;ELISA;IHC
Target :	MRGE
Gene Name :	MRGPRE
Protein Name :	Mas-related G-protein coupled receptor member E
Human Gene Id :	116534
Human Swiss Prot No :	Q86SM8
Mouse Gene Id :	244238
Mouse Swiss Prot No :	Q91ZB7
Rat Gene Id :	404660
Rat Swiss Prot No :	Q7TN40
Immunogen :	The antiserum was produced against synthesized peptide derived from human MRGRE. AA range:171-220
Specificity :	MRGE Polyclonal Antibody detects endogenous levels of MRGE protein.
Formulation :	Liquid in PBS containing 50% glycerol, 0.5% BSA and 0.02% sodium azide.
Source :	Polyclonal, Rabbit,IgG
Dilution :	WB 1:500-2000;IHC 1:50-300; ELISA 2000-20000
Purification :	The antibody was affinity-purified from rabbit antiserum by affinity-chromatography using epitope-specific immunogen.

Concentration :	1 mg/ml
Storage Stability :	-15°C to -25°C/1 year(Do not lower than -25°C)
Observed Band :	30kD
Background :	function:Orphan receptor. May regulate nociceptor function and/or development, including the sensation or modulation of pain.,similarity:Belongs to the G-protein coupled receptor 1 family. Mas subfamily.,
Function :	function:Orphan receptor. May regulate nociceptor function and/or development, including the sensation or modulation of pain.,similarity:Belongs to the G-protein coupled receptor 1 family. Mas subfamily.,
Subcellular Location :	Cell membrane; Multi-pass membrane protein.

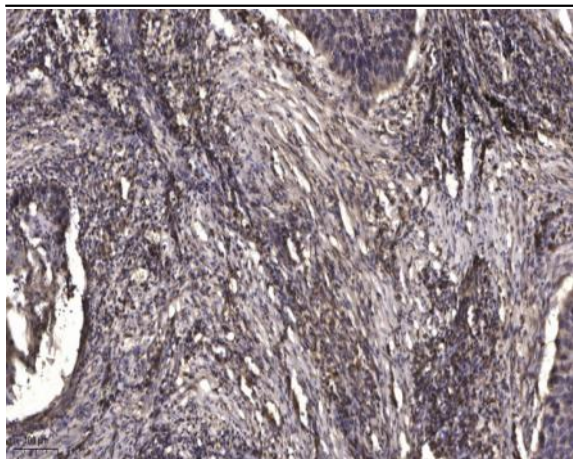
Products Images



Western Blot analysis of various cells using MRGE Polyclonal Antibody



Western blot analysis of lysates from HeLa cells, using MRGRE Antibody. The lane on the right is blocked with the synthesized peptide.



Immunohistochemical analysis of paraffin-embedded human Squamous cell carcinoma of lung. 1, Antibody was diluted at 1:200(4° overnight). 2, Tris-EDTA,pH9.0 was used for antigen retrieval. 3,Secondary antibody was diluted at 1:200(room temperature, 45min).