

LIR-6 Polyclonal Antibody

| | |
|------------------------------|---|
| Catalog No : | YT2569 |
| Reactivity : | Human |
| Applications : | WB;IHC |
| Target : | LIR-6 |
| Fields : | >>Osteoclast differentiation;>>B cell receptor signaling pathway |
| Gene Name : | LILRA1 |
| Protein Name : | Leukocyte immunoglobulin-like receptor subfamily A member 1 |
| Human Gene Id : | 11024 |
| Human Swiss Prot No : | O75019 |
| Immunogen : | The antiserum was produced against synthesized peptide derived from human LILRA1. AA range:53-102 |
| Specificity : | LIR-6 Polyclonal Antibody detects endogenous levels of LIR-6 protein. |
| Formulation : | Liquid in PBS containing 50% glycerol, 0.5% BSA and 0.02% sodium azide. |
| Source : | Polyclonal, Rabbit,IgG |
| Dilution : | WB 1:500-2000;IHC 1:50-300 |
| Purification : | The antibody was affinity-purified from rabbit antiserum by affinity-chromatography using epitope-specific immunogen. |
| Concentration : | 1 mg/ml |
| Storage Stability : | -15°C to -25°C/1 year(Do not lower than -25°C) |
| Observed Band : | 53kD |

Background :

This gene encodes an activating member of the leukocyte immunoglobulin-like receptor (LIR) family, which is found in a gene cluster at chromosomal region 19q13.4. The encoded protein is predominantly expressed in B cells, interacts with major histocompatibility complex class I ligands, and contributes to the regulation of immune responses. Alternative splicing results in multiple transcript variants encoding different isoforms. [provided by RefSeq, May 2013],

Function :

function:May act as receptor for class I MHC antigens.,similarity:Contains 4 Ig-like C2-type (immunoglobulin-like) domains.,tissue specificity:Detected in monocytes and B-cells.,

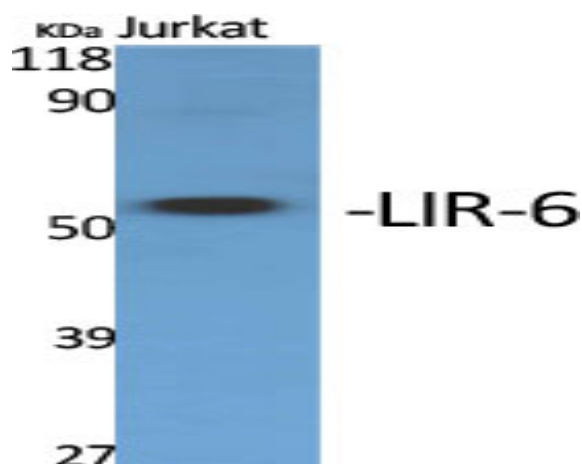
Subcellular Location :

Membrane; Single-pass type I membrane protein.

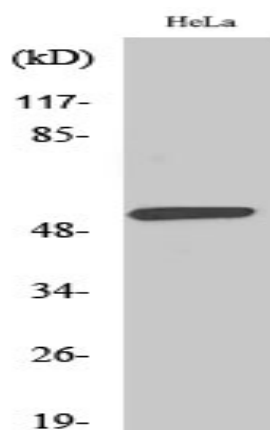
Expression :

Detected in monocytes and B-cells.

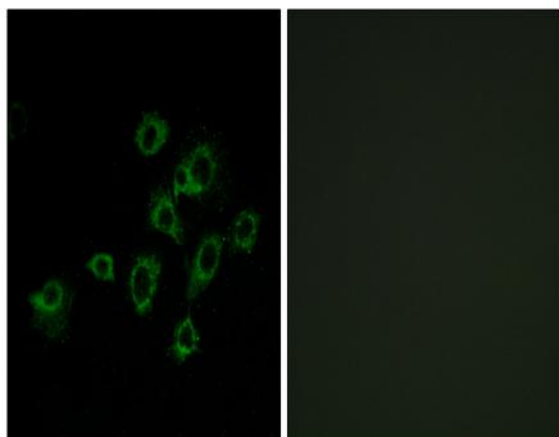
Products Images



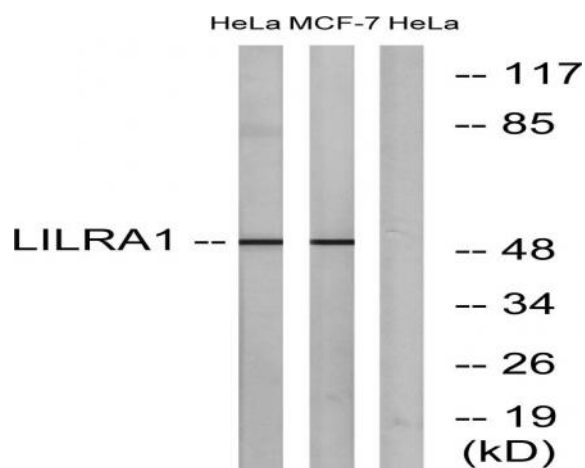
Western Blot analysis of various cells using LIR-6 Polyclonal Antibody



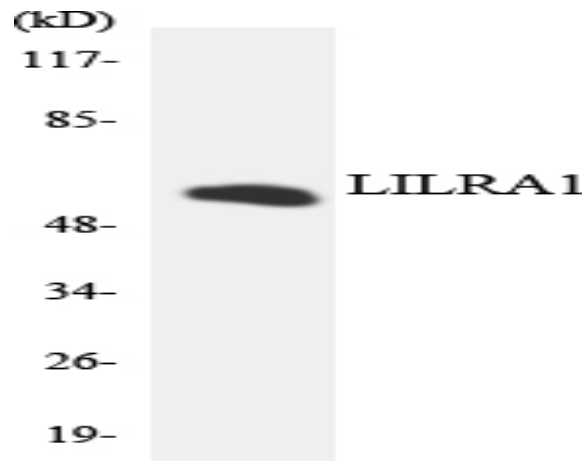
Western Blot analysis of MCF7 cells using LIR-6 Polyclonal Antibody



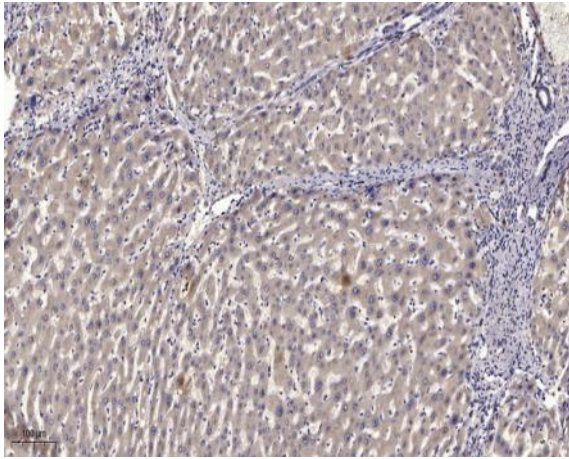
Immunofluorescence analysis of A549 cells, using LILRA1 Antibody. The picture on the right is blocked with the synthesized peptide.



Western blot analysis of lysates from HeLa and MCF-7 cells, using LILRA1 Antibody. The lane on the right is blocked with the synthesized peptide.



Western blot analysis of the lysates from HeLa cells using LILRA1 antibody.



Immunohistochemical analysis of paraffin-embedded human liver cancer. 1, Antibody was diluted at 1:200(4° overnight). 2, Tris-EDTA,pH9.0 was used for antigen retrieval. 3,Secondary antibody was diluted at 1:200(room temperature, 45min).