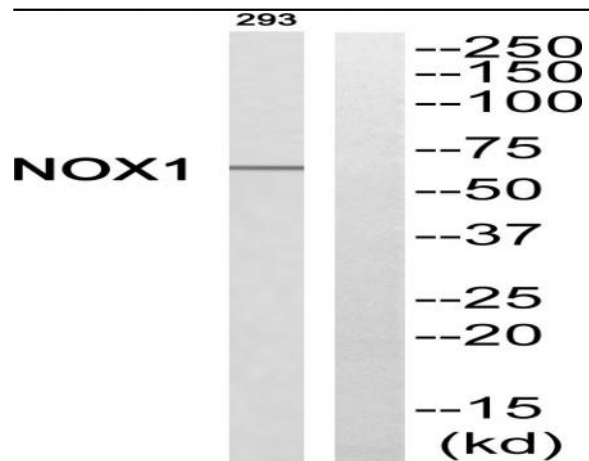


## Mox1 Polyclonal Antibody

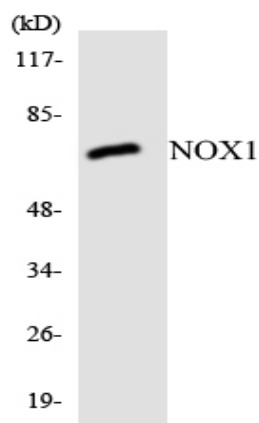
<b>Catalog No :</b>	YT2820
<b>Reactivity :</b>	Human;Mouse
<b>Applications :</b>	WB;IHC
<b>Target :</b>	Mox1
<b>Fields :</b>	>>Osteoclast differentiation;>>AGE-RAGE signaling pathway in diabetic complications;>>Alzheimer disease;>>Pathways of neurodegeneration - multiple diseases;>>Chemical carcinogenesis - reactive oxygen species;>>Lipid and atherosclerosis;>>Fluid shear stress and atherosclerosis
<b>Gene Name :</b>	NOX1
<b>Protein Name :</b>	NADPH oxidase 1
<b>Human Gene Id :</b>	27035
<b>Human Swiss Prot No :</b>	Q9Y5S8
<b>Mouse Gene Id :</b>	237038
<b>Mouse Swiss Prot No :</b>	Q8CIZ9
<b>Immunogen :</b>	The antiserum was produced against synthesized peptide derived from human NOX1. AA range:436-485
<b>Specificity :</b>	Mox1 Polyclonal Antibody detects endogenous levels of Mox1 protein.
<b>Formulation :</b>	Liquid in PBS containing 50% glycerol, 0.5% BSA and 0.02% sodium azide.
<b>Source :</b>	Polyclonal, Rabbit,IgG
<b>Dilution :</b>	WB 1:500-2000;IHC 1:50-300
<b>Purification :</b>	The antibody was affinity-purified from rabbit antiserum by affinity-chromatography using epitope-specific immunogen.

<b>Concentration :</b>	1 mg/ml
<b>Storage Stability :</b>	-15°C to -25°C/1 year(Do not lower than -25°C)
<b>Observed Band :</b>	65kD
<b>Cell Pathway :</b>	Leukocyte transendothelial migration;
<b>Background :</b>	This gene encodes a member of the NADPH oxidase family of enzymes responsible for the catalytic one-electron transfer of oxygen to generate superoxide or hydrogen peroxide. Alternatively spliced transcript variants encoding multiple isoforms have been observed for this gene. [provided by RefSeq, Nov 2012],
<b>Function :</b>	cofactor:FAD .,cofactor:NADP .,enzyme regulation:The oxidase activity is potentiated by NOXA1 and NOXO1.,function:NOH-1S is a voltage-gated proton channel that mediates the H(+) currents of resting phagocytes and other tissues. It participates in the regulation of cellular pH and is blocked by zinc. NOH-1L is a pyridine nucleotide-dependent oxidoreductase that generates superoxide and might conduct H(+) ions as part of its electron transport mechanism, whereas NOH-1S does not contain an electron transport chain.,similarity:Contains 1 FAD-binding FR-type domain.,similarity:Contains 1 ferric oxidoreductase domain.,subunit:NOX1, NOXA1, NOXO1, RAC1 and CYBA forms a functional multimeric complex supporting ROS production. Interacts with NOXA1 and NOXO1.,tissue specificity:NOH-1L is detected in colon, uterus, prostate, and colon carcinoma, but not in peripheral blood leukocytes. NOH-1S is dete
<b>Subcellular Location :</b>	Cell projection, invadopodium membrane ; Multi-pass membrane protein . Cell membrane .
<b>Expression :</b>	NOH-1L is detected in colon, uterus, prostate, and colon carcinoma, but not in peripheral blood leukocytes. NOH-1S is detected only in colon and colon carcinoma cells.

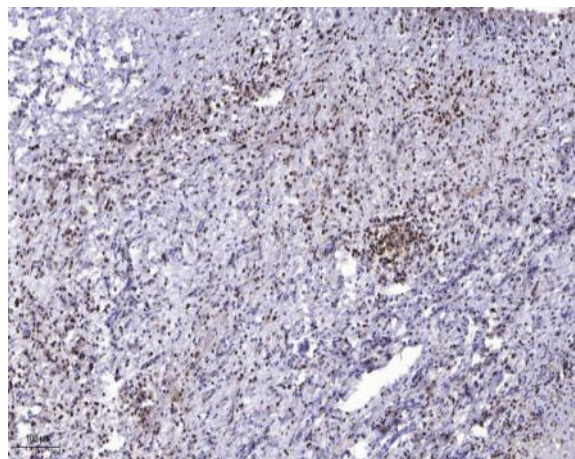
## Products Images



Western blot analysis of the lysates from HeLa cells using NOX1 antibody.



Immunohistochemical analysis of paraffin-embedded human liver cancer. 1, Antibody was diluted at 1:200(4° overnight). 2, Tris-EDTA,pH9.0 was used for antigen retrieval. 3,Secondary antibody was diluted at 1:200(room temperature, 45min).



Immunohistochemical analysis of paraffin-embedded human liver cancer. 1, Antibody was diluted at 1:200(4° overnight). 2, Tris-EDTA,pH9.0 was used for antigen retrieval. 3,Secondary antibody was diluted at 1:200(room temperature, 45min).