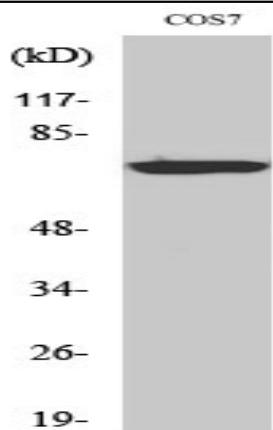


LIMK-1/2 Polyclonal Antibody

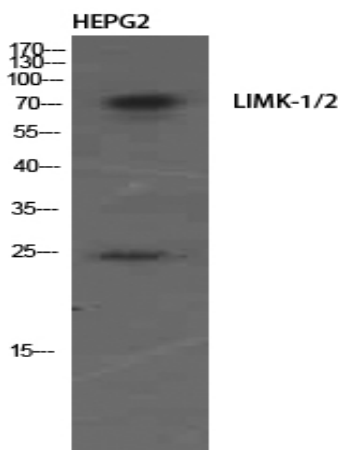
Catalog No :	YT2564
Reactivity :	Human;Mouse;Rat;Monkey
Applications :	WB;IHC;IF;ELISA
Target :	LIMK-1/2
Fields :	>>Axon guidance;>>Fc gamma R-mediated phagocytosis;>>Regulation of actin cytoskeleton;>>Yersinia infection;>>Human immunodeficiency virus 1 infection
Gene Name :	LIMK1/LIMK2
Protein Name :	LIM domain kinase 1/LIM domain kinase 2
Human Gene Id :	3984/3985
Human Swiss Prot No :	P53667/P53671
Mouse Gene Id :	16885/16886
Rat Gene Id :	29524
Rat Swiss Prot No :	P53669/P53670
Immunogen :	The antiserum was produced against synthesized peptide derived from human LIMK1/2. AA range:481-530
Specificity :	LIMK-1/2 Polyclonal Antibody detects endogenous levels of LIMK-1/2 protein.
Formulation :	Liquid in PBS containing 50% glycerol, 0.5% BSA and 0.02% sodium azide.
Source :	Polyclonal, Rabbit,IgG
Dilution :	WB 1:500 - 1:2000. IHC 1:100 - 1:300. ELISA: 1:40000.. IF 1:50-200
Purification :	The antibody was affinity-purified from rabbit antiserum by affinity-chromatography using epitope-specific immunogen.

Concentration :	1 mg/ml
Storage Stability :	-15°C to -25°C/1 year(Do not lower than -25°C)
Observed Band :	72kD
Cell Pathway :	Axon guidance;Fc gamma R-mediated phagocytosis;Regulates Actin and Cytoskeleton;
Background :	<p>There are approximately 40 known eukaryotic LIM proteins, so named for the LIM domains they contain. LIM domains are highly conserved cysteine-rich structures containing 2 zinc fingers. Although zinc fingers usually function by binding to DNA or RNA, the LIM motif probably mediates protein-protein interactions. LIM kinase-1 and LIM kinase-2 belong to a small subfamily with a unique combination of 2 N-terminal LIM motifs and a C-terminal protein kinase domain. LIMK1 is a serine/threonine kinase that regulates actin polymerization via phosphorylation and inactivation of the actin binding factor cofilin. This protein is ubiquitously expressed during development and plays a role in many cellular processes associated with cytoskeletal structure. This protein also stimulates axon growth and may play a role in brain development. LIMK1 hemizyosity is implicated in the impaired visuospatial constructive cog</p>
Function :	<p>catalytic activity:ATP + a protein = ADP + a phosphoprotein.,disease:Haploinsufficiency of LIMK1 may be the cause of certain cardiovascular and musculo-skeletal abnormalities observed in Williams-Beuren syndrome (WBS), a rare developmental disorder. It is a contiguous gene deletion syndrome involving genes from chromosome band 7q11.23.,function:Protein kinase which regulates actin filament dynamics. Phosphorylates and inactivates the actin binding/depolymerizing factor cofilin, thereby stabilizing the actin cytoskeleton. Isoform 3 has a dominant negative effect on actin cytoskeletal changes. May be involved in brain development.,PTM:Autophosphorylated.,PTM:Phosphorylated on serine and/or threonine residues by ROCK1. May be dephosphorylated and inactivated by SSH1.,similarity:Belongs to the protein kinase superfamily. TKL Ser/Thr protein kinase family.,similarity:Contains 1 PDZ (DHR) doma</p>
Subcellular Location :	Cytoplasm . Nucleus . Cytoplasm, cytoskeleton . Cell projection, lamellipodium . Predominantly found in the cytoplasm. Localizes in the lamellipodium in a CDC42BPA, CDC42BPB and FAM89B/LRAP25-dependent manner. .
Expression :	Highest expression in both adult and fetal nervous system. Detected ubiquitously throughout the different regions of adult brain, with highest levels in the cerebral cortex. Expressed to a lesser extent in heart and skeletal muscle.

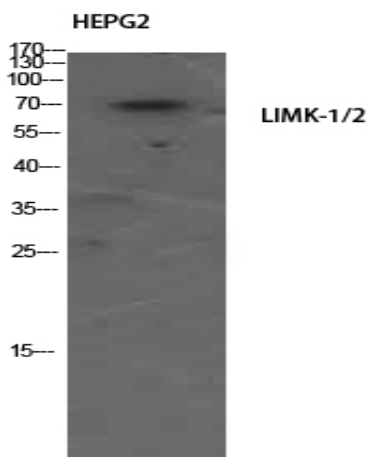
Products Images



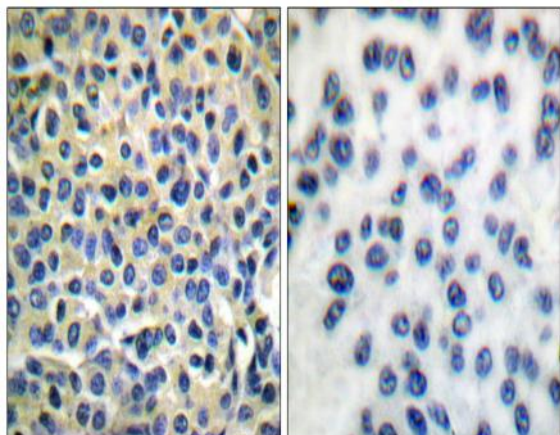
Western Blot analysis of various cells using LIMK-1/2 Polyclonal Antibody diluted at 1:500



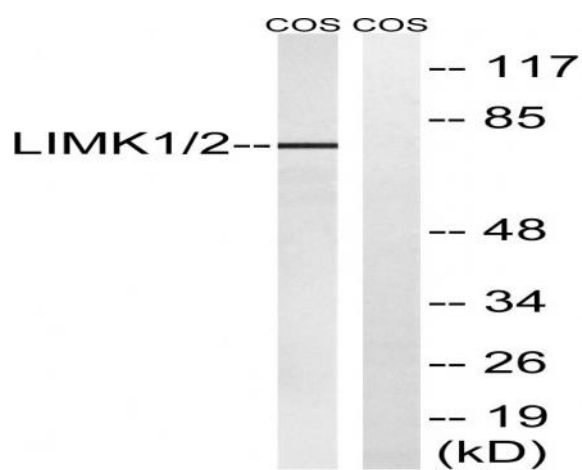
Western Blot analysis of HEPG2 using LIMK-1/2 Polyclonal Antibody. Antibody was diluted at 1:500



Western Blot analysis of HEPG2 using LIMK-1/2 Polyclonal Antibody. Antibody was diluted at 1:500



Immunohistochemistry analysis of paraffin-embedded human breast carcinoma tissue, using LIMK1/2 Antibody. The picture on the right is blocked with the synthesized peptide.



Western blot analysis of lysates from COS7 cells, using LIMK1/2 Antibody. The lane on the right is blocked with the synthesized peptide.