

## KPI-2 Polyclonal Antibody

<b>Catalog No :</b>	YT2493
<b>Reactivity :</b>	Human;Mouse
<b>Applications :</b>	WB;IHC;IF;ELISA
<b>Target :</b>	KPI-2
<b>Gene Name :</b>	LMTK2
<b>Protein Name :</b>	Serine/threonine-protein kinase LMTK2
<b>Human Gene Id :</b>	22853
<b>Human Swiss Prot No :</b>	Q8IWU2
<b>Mouse Swiss Prot No :</b>	Q3TYD6
<b>Immunogen :</b>	The antiserum was produced against synthesized peptide derived from human LMTK2. AA range:651-700
<b>Specificity :</b>	KPI-2 Polyclonal Antibody detects endogenous levels of KPI-2 protein.
<b>Formulation :</b>	Liquid in PBS containing 50% glycerol, 0.5% BSA and 0.02% sodium azide.
<b>Source :</b>	Polyclonal, Rabbit,IgG
<b>Dilution :</b>	WB 1:500 - 1:2000. IHC 1:100 - 1:300. IF 1:200 - 1:1000. ELISA: 1:20000. Not yet tested in other applications.
<b>Purification :</b>	The antibody was affinity-purified from rabbit antiserum by affinity-chromatography using epitope-specific immunogen.
<b>Concentration :</b>	1 mg/ml
<b>Storage Stability :</b>	-15°C to -25°C/1 year(Do not lower than -25°C)
<b>Observed Band :</b>	164kD

**Background :**

The protein encoded by this gene belongs to the protein kinase superfamily and the protein tyrosine kinase family. It contains N-terminal transmembrane helices and a long C-terminal cytoplasmic tail with serine/threonine/tyrosine kinase activity. This protein interacts with several other proteins, such as Inhibitor-2 (Inh2), protein phosphatase-1 (PP1C), p35, and myosin VI. It phosphorylates other proteins, and is itself also phosphorylated when interacting with cyclin-dependent kinase 5 (cdk5)/p35 complex. This protein involves in nerve growth factor (NGF)-TrkA signalling, and also plays a critical role in endosomal membrane trafficking. Mouse studies suggested an essential role of this protein in spermatogenesis. [provided by RefSeq, Oct 2009],

**Function :**

catalytic activity:ATP + a protein = ADP + a phosphoprotein.,function:Phosphorylates PPP1C, phosphorylase b and CFTR.,online information:LMTK2 entry,PTM:Autophosphorylated. Phosphorylated.,similarity:Belongs to the protein kinase superfamily. Tyr protein kinase family.,similarity:Contains 1 protein kinase domain.,subunit:Interacts with PPP1C and inhibitor-2.,tissue specificity:Mainly expressed in skeletal muscle, and weakly in brain and pancreas.,

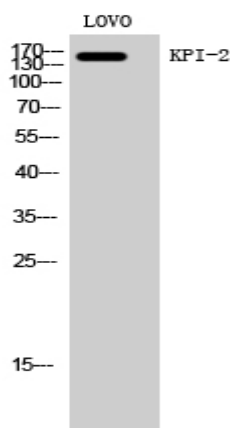
**Subcellular Location :**

Membrane ; Multi-pass membrane protein .

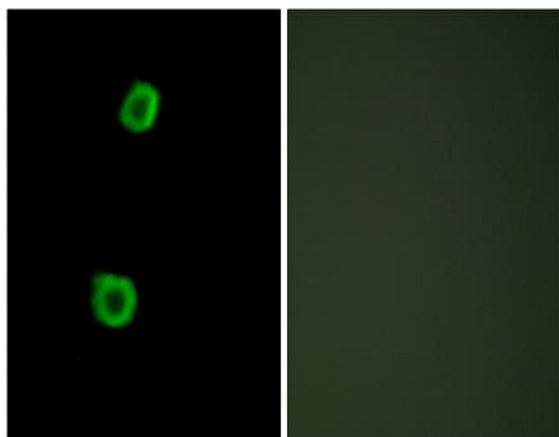
**Expression :**

Mainly expressed in skeletal muscle, and weakly in brain and pancreas.

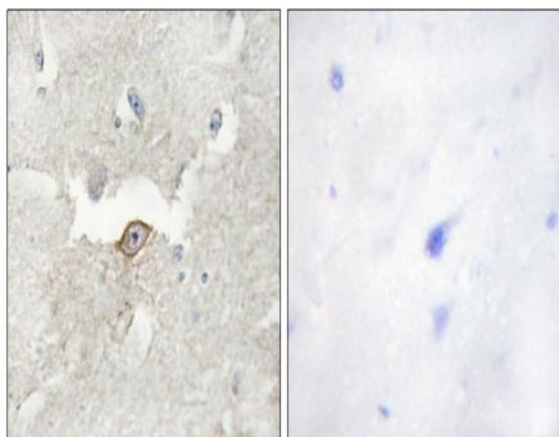
## Products Images



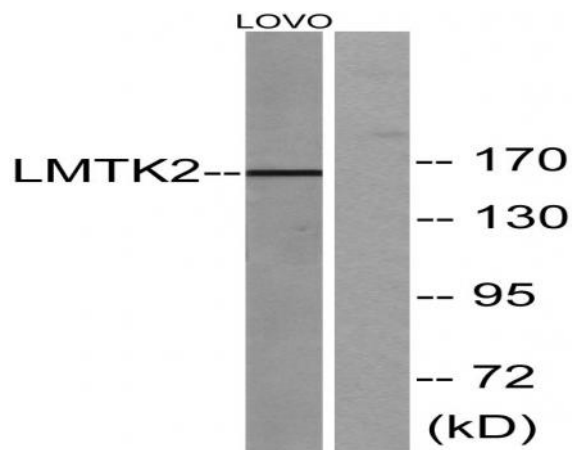
Western Blot analysis of LOVO cells using KPI-2 Polyclonal Antibody



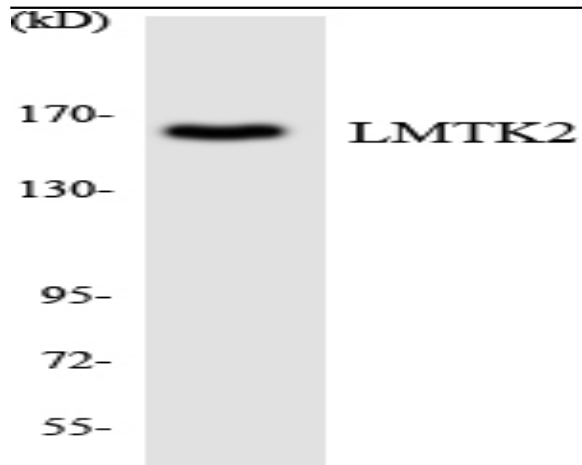
Immunofluorescence analysis of HepG2 cells, using LMTK2 Antibody. The picture on the right is blocked with the synthesized peptide.



Immunohistochemistry analysis of paraffin-embedded human brain tissue, using LMTK2 Antibody. The picture on the right is blocked with the synthesized peptide.



Western blot analysis of lysates from LOVO cells, using LMTK2 Antibody. The lane on the right is blocked with the synthesized peptide.



Western blot analysis of the lysates from COLO205 cells using LMTK2 antibody.