

## Keratin 37/38 Polyclonal Antibody

<b>Catalog No :</b>	YT2465
<b>Reactivity :</b>	Human
<b>Applications :</b>	WB;ELISA;IHC
<b>Target :</b>	Keratin 37/38
<b>Fields :</b>	>>Estrogen signaling pathway;>>Staphylococcus aureus infection
<b>Gene Name :</b>	KRT37/KRT38
<b>Protein Name :</b>	Keratin type I cuticular Ha7/Keratin type I cuticular Ha8
<b>Human Gene Id :</b>	8688
<b>Human Swiss Prot No :</b>	O76014/O76015
<b>Immunogen :</b>	The antiserum was produced against synthesized peptide derived from human KRT37/38. AA range:201-250
<b>Specificity :</b>	Keratin 37/38 Polyclonal Antibody detects endogenous levels of Keratin 37/38 protein.
<b>Formulation :</b>	Liquid in PBS containing 50% glycerol, 0.5% BSA and 0.02% sodium azide.
<b>Source :</b>	Polyclonal, Rabbit,IgG
<b>Dilution :</b>	WB 1:500-2000;IHC 1:50-300; ELISA 2000-20000
<b>Purification :</b>	The antibody was affinity-purified from rabbit antiserum by affinity-chromatography using epitope-specific immunogen.
<b>Concentration :</b>	1 mg/ml
<b>Storage Stability :</b>	-15°C to -25°C/1 year(Do not lower than -25°C)
<b>Observed Band :</b>	50kD

**Background :**

The protein encoded by this gene is a member of the keratin gene family. As a type I hair keratin, it is an acidic protein which heterodimerizes with type II keratins to form hair and nails. The type I hair keratins are clustered in a region of chromosome 17q12-q21 and have the same direction of transcription. [provided by RefSeq, Jul 2008],

**Function :**

miscellaneous:There are two types of hair/microfibrillar keratin, I (acidic) and II (neutral to basic).,similarity:Belongs to the intermediate filament family.,

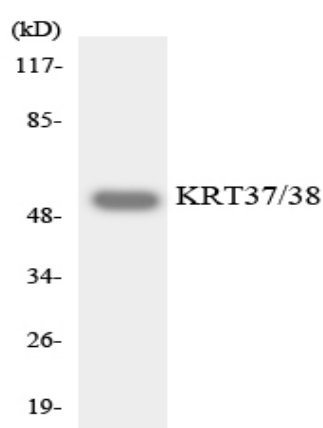
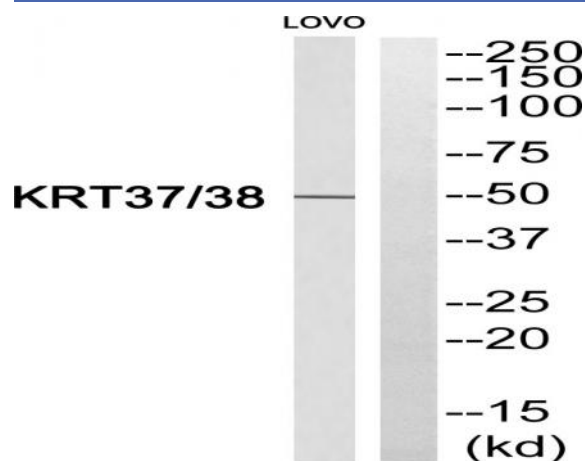
**Subcellular Location :**

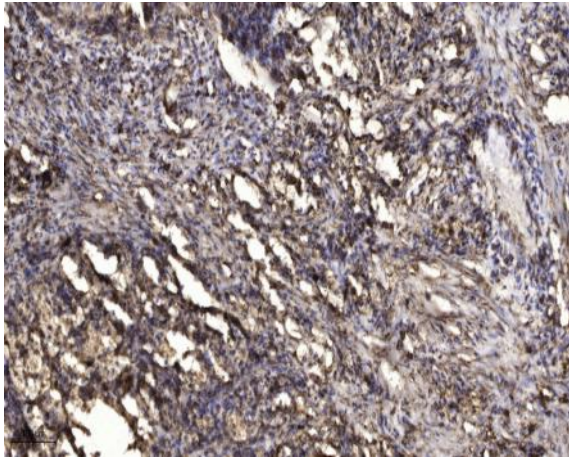
intermediate filament,extracellular exosome,

**Expression :**

Scalp,

## Products Images





Immunohistochemical analysis of paraffin-embedded human Squamous cell carcinoma of lung. 1, Antibody was diluted at 1:200(4° overnight). 2, Tris-EDTA,pH9.0 was used for antigen retrieval. 3,Secondary antibody was diluted at 1:200(room temperature, 45min).