

**MRP-L47 Polyclonal Antibody**

|                              |   |
|------------------------------|---|
| <b>Catalog No :</b>          | YT2866  |
| <b>Reactivity :</b>          | Human;Rat;Mouse;  |
| <b>Applications :</b>        | WB;IHC  |
| <b>Target :</b>              | MRP-L47   |
| <b>Gene Name :</b>           | MRPL47  |
| <b>Protein Name :</b>        | 39S ribosomal protein L47 mitochondrial   |
| <b>Human Gene Id :</b>       | 57129   |
| <b>Human Swiss Prot No :</b> | Q9HD33  |
| <b>Mouse Swiss Prot No :</b> | Q8K2Y7  |
| <b>Immunogen :</b>           | The antiserum was produced against synthesized peptide derived from human MRPL47. AA range:191-240                    |
| <b>Specificity :</b>         | MRP-L47 Polyclonal Antibody detects endogenous levels of MRP-L47 protein.   |
| <b>Formulation :</b>         | Liquid in PBS containing 50% glycerol, 0.5% BSA and 0.02% sodium azide.   |
| <b>Source :</b>              | Polyclonal, Rabbit,IgG  |
| <b>Dilution :</b>            | WB 1:500-2000;IHC 1:50-300  |
| <b>Purification :</b>        | The antibody was affinity-purified from rabbit antiserum by affinity-chromatography using epitope-specific immunogen. |
| <b>Concentration :</b>       | 1 mg/ml   |
| <b>Storage Stability :</b>   | -15°C to -25°C/1 year(Do not lower than -25°C)  |
| <b>Observed Band :</b>       | 30kD  |

## Background :

Mammalian mitochondrial ribosomal proteins are encoded by nuclear genes and help in protein synthesis within the mitochondrion. Mitochondrial ribosomes (mitoribosomes) consist of a small 28S subunit and a large 39S subunit. They have an estimated 75% protein to rRNA composition compared to prokaryotic ribosomes, where this ratio is reversed. Another difference between mammalian mitoribosomes and prokaryotic ribosomes is that the latter contain a 5S rRNA. Among different species, the proteins comprising the mitoribosome differ greatly in sequence, and sometimes in biochemical properties, which prevents easy recognition by sequence homology. This gene encodes a 39S subunit protein. This gene is immediately adjacent to the gene for BAF complex 53 kDa subunit protein a (BAF53a), in a tail-to-tail orientation. Two transcript variants encoding different protein isoforms have been identified

## Function :

sequence caution:Chimeric cDNA. Seems to include a portion of the orthologous murine sequence.,similarity:Belongs to the ribosomal protein L47em family.,

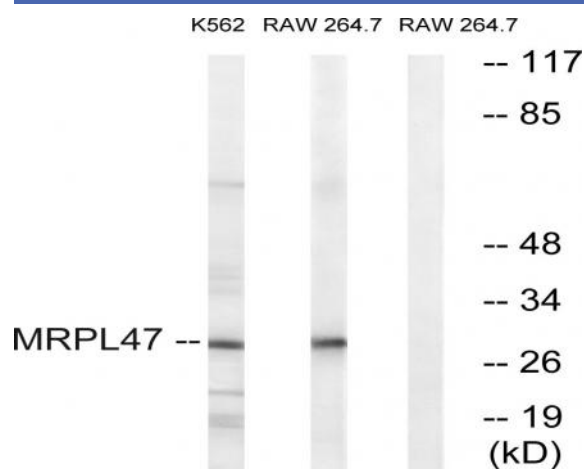
## Subcellular Location :

Mitochondrion .

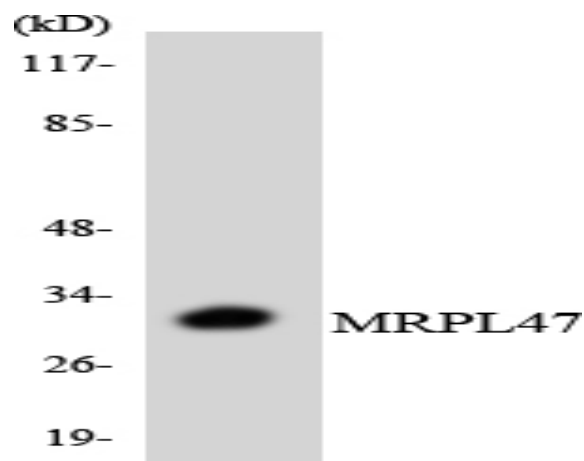
## Expression :

Lymph,

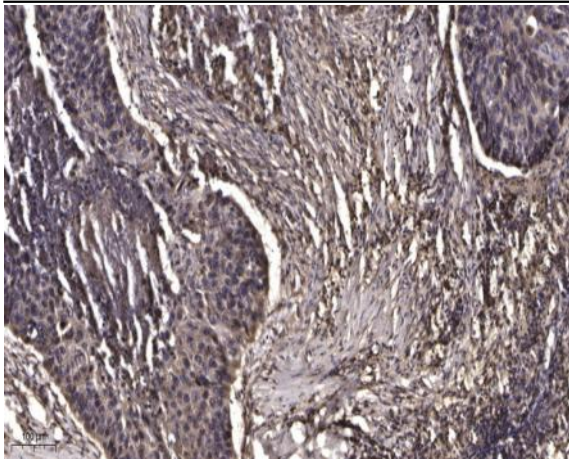
## Products Images



Western blot analysis of lysates from RAW264.7 and K562 cells, using MRPL47 Antibody. The lane on the right is blocked with the synthesized peptide.



Western blot analysis of the lysates from 293 cells using MRPL47 antibody.



Immunohistochemical analysis of paraffin-embedded human Squamous cell carcinoma of lung. 1, Antibody was diluted at 1:200(4° overnight). 2, Tris-EDTA,pH9.0 was used for antigen retrieval. 3,Secondary antibody was diluted at 1:200(room temperature, 45min).