

## MCT14 Polyclonal Antibody

<b>Catalog No :</b>	YT2684
<b>Reactivity :</b>	Human;Mouse
<b>Applications :</b>	WB;ELISA
<b>Target :</b>	MCT14
<b>Gene Name :</b>	SLC16A14
<b>Protein Name :</b>	Monocarboxylate transporter 14
<b>Human Gene Id :</b>	151473
<b>Human Swiss Prot No :</b>	Q7RTX9
<b>Mouse Gene Id :</b>	71781
<b>Mouse Swiss Prot No :</b>	Q8K1C7
<b>Immunogen :</b>	The antiserum was produced against synthesized peptide derived from human MOT14. AA range:131-180
<b>Specificity :</b>	MCT14 Polyclonal Antibody detects endogenous levels of MCT14 protein.
<b>Formulation :</b>	Liquid in PBS containing 50% glycerol, 0.5% BSA and 0.02% sodium azide.
<b>Source :</b>	Polyclonal, Rabbit,IgG
<b>Dilution :</b>	WB 1:500 - 1:2000. ELISA: 1:10000. Not yet tested in other applications.
<b>Purification :</b>	The antibody was affinity-purified from rabbit antiserum by affinity-chromatography using epitope-specific immunogen.
<b>Concentration :</b>	1 mg/ml
<b>Storage Stability :</b>	-15°C to -25°C/1 year(Do not lower than -25°C)

**Observed Band :** 48kD

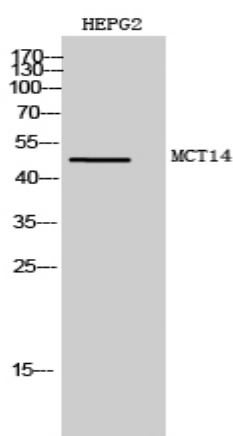
**Background :** function:Proton-linked monocarboxylate transporter. Catalyzes the rapid transport across the plasma membrane of many monocarboxylates.,similarity:Belongs to the major facilitator superfamily. Monocarboxylate porter (TC 2.A.1.13) family.,

**Function :** function:Proton-linked monocarboxylate transporter. Catalyzes the rapid transport across the plasma membrane of many monocarboxylates.,similarity:Belongs to the major facilitator superfamily. Monocarboxylate porter (TC 2.A.1.13) family.,

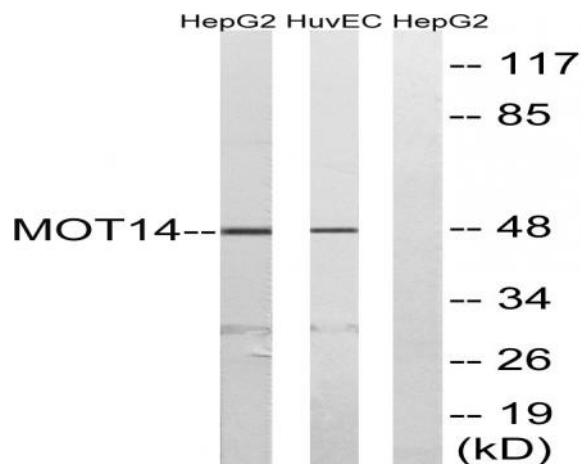
**Subcellular Location :** Cell membrane ; Multi-pass membrane protein .

**Expression :** Alzheimer cortex,Brain,Brain cortex,Lung,

## Products Images



Western Blot analysis of HEPG2 cells using MCT14 Polyclonal Antibody diluted at 1:1000



Western blot analysis of lysates from HUVEC and HepG2 cells, using MOT14 Antibody. The lane on the right is blocked with the synthesized peptide.