

## MCT12 Polyclonal Antibody

<b>Catalog No :</b>	YT2682
<b>Reactivity :</b>	Human;Mouse
<b>Applications :</b>	WB;IHC;IF;ELISA
<b>Target :</b>	MCT12
<b>Gene Name :</b>	SLC16A12
<b>Protein Name :</b>	Monocarboxylate transporter 12
<b>Human Gene Id :</b>	387700
<b>Human Swiss Prot No :</b>	Q6ZSM3
<b>Mouse Gene Id :</b>	240638
<b>Mouse Swiss Prot No :</b>	Q8BGC3
<b>Immunogen :</b>	The antiserum was produced against synthesized peptide derived from human MOT12. AA range:115-164
<b>Specificity :</b>	MCT12 Polyclonal Antibody detects endogenous levels of MCT12 protein.
<b>Formulation :</b>	Liquid in PBS containing 50% glycerol, 0.5% BSA and 0.02% sodium azide.
<b>Source :</b>	Polyclonal, Rabbit,IgG
<b>Dilution :</b>	WB 1:500 - 1:2000. IHC 1:100 - 1:300. ELISA: 1:20000.. IF 1:50-200
<b>Purification :</b>	The antibody was affinity-purified from rabbit antiserum by affinity-chromatography using epitope-specific immunogen.
<b>Concentration :</b>	1 mg/ml
<b>Storage Stability :</b>	-15°C to -25°C/1 year(Do not lower than -25°C)

---

**Observed Band :** 53kD

---

**Background :** This gene encodes a transmembrane transporter that likely plays a role in monocarboxylic acid transport. A mutation in this gene has been associated with juvenile cataracts with microcornea and renal glucosuria. [provided by RefSeq, Mar 2010],

---

**Function :** disease:Defects in SLC16A12 are a cause of cataract juvenile with microcornea and glucosuria (CJMG) [MIM:612018]. Renal glucosuria is defined by elevated glucose level in the urine without hyperglycemia and without evidence of morphological renal anomalies.,function:Proton-linked monocarboxylate transporter. Catalyzes the rapid transport across the plasma membrane of many monocarboxylates.,similarity:Belongs to the major facilitator superfamily. Monocarboxylate porter (TC 2.A.1.13) family.,tissue specificity:Most highly expressed in kidney, followed by retina, lung, and testis. Very weakly expressed in brain and liver. Also detected in lens.,

---

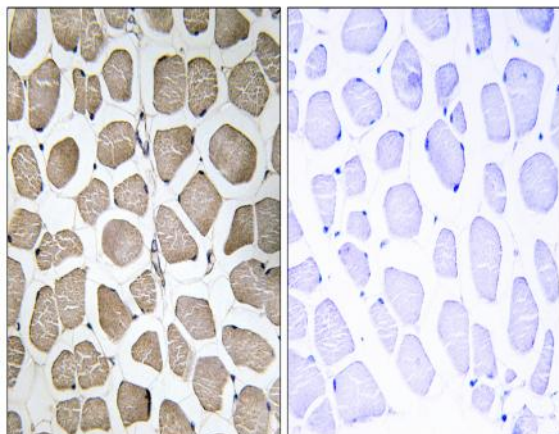
**Subcellular Location :** Cell membrane ; Multi-pass membrane protein .

---

**Expression :** Most highly expressed in kidney, followed by retina, lung, heart and testis. Very weakly expressed in brain and liver. Also detected in lens.

---

## Products Images



Immunohistochemistry analysis of paraffin-embedded human skeletal muscle tissue, using MOT12 Antibody. The picture on the right is blocked with the synthesized peptide.