

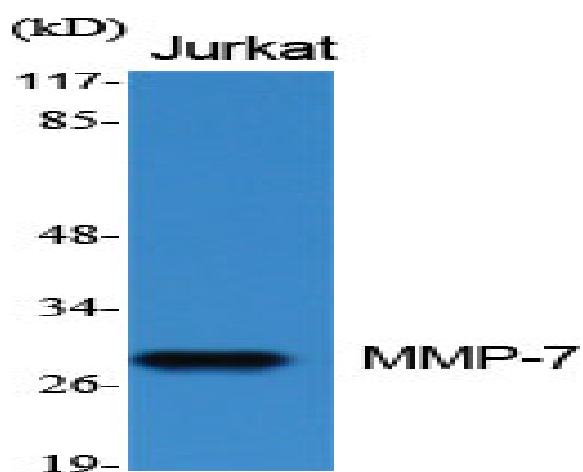
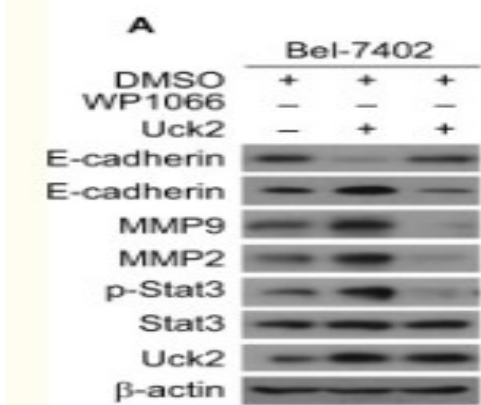
MMP-7 Polyclonal Antibody

Catalog No :	YT2663
Reactivity :	Human;Mouse;Rat;Monkey
Applications :	WB;IHC;IF;ELISA
Target :	MMP-7
Fields :	>>Wnt signaling pathway;>>Human T-cell leukemia virus 1 infection
Gene Name :	MMP7
Protein Name :	Matrilysin
Human Gene Id :	4316
Human Swiss Prot No :	P09237
Mouse Swiss Prot No :	Q10738
Rat Gene Id :	25335
Rat Swiss Prot No :	P50280
Immunogen :	The antiserum was produced against synthesized peptide derived from human MMP-7. AA range:218-267
Specificity :	MMP-7 Polyclonal Antibody detects endogenous levels of MMP-7 protein.
Formulation :	Liquid in PBS containing 50% glycerol, 0.5% BSA and 0.02% sodium azide.
Source :	Polyclonal, Rabbit,IgG
Dilution :	WB 1:500 - 1:2000. IHC 1:100 - 1:300. ELISA: 1:40000.. IF 1:50-200
Purification :	The antibody was affinity-purified from rabbit antiserum by affinity-chromatography using epitope-specific immunogen.

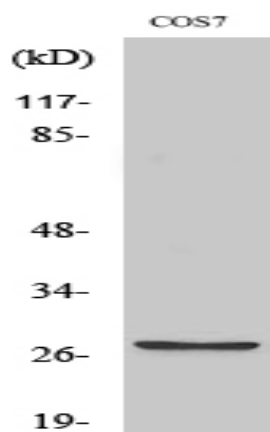
Concentration :	1 mg/ml
Storage Stability :	-15°C to -25°C/1 year(Do not lower than -25°C)
Observed Band :	29kD
Cell Pathway :	WNT;WNT-T CELL
Background :	<p>matrix metalloproteinase 7(MMP7) Homo sapiens This gene encodes a member of the peptidase M10 family of matrix metalloproteinases (MMPs). Proteins in this family are involved in the breakdown of extracellular matrix in normal physiological processes, such as embryonic development, reproduction, and tissue remodeling, as well as in disease processes, such as arthritis and metastasis. The encoded preproprotein is proteolytically processed to generate the mature protease. This secreted protease breaks down proteoglycans, fibronectin, elastin and casein and differs from most MMP family members in that it lacks a conserved C-terminal hemopexin domain. The enzyme is involved in wound healing, and studies in mice suggest that it regulates the activity of defensins in intestinal mucosa. The gene is part of a cluster of MMP genes on chromosome 11. This gene exhibits elevated expression levels in multiple human cancers. [provided by RefSeq, Jan 2016],</p>
Function :	<p>catalytic activity: Cleavage of 14-Ala- -Leu-15 and 16-Tyr- -Leu-17 in B chain of insulin. No action on collagen types I, II, IV, V. Cleaves gelatin chain alpha-2(I) > alpha-1(I)., cofactor: Binds 2 calcium ions per subunit., cofactor: Binds 2 zinc ions per subunit., domain: The conserved cysteine present in the cysteine-switch motif binds the catalytic zinc ion, thus inhibiting the enzyme. The dissociation of the cysteine from the zinc ion upon the activation-peptide release activates the enzyme., function: Degrades casein, gelatins of types I, III, IV, and V, and fibronectin. Activates procollagenase., similarity: Belongs to the peptidase M10A family.,</p>
Subcellular Location :	Secreted, extracellular space, extracellular matrix .
Expression :	Colon, Human small intestine, Kidney, Placenta,

Products Images

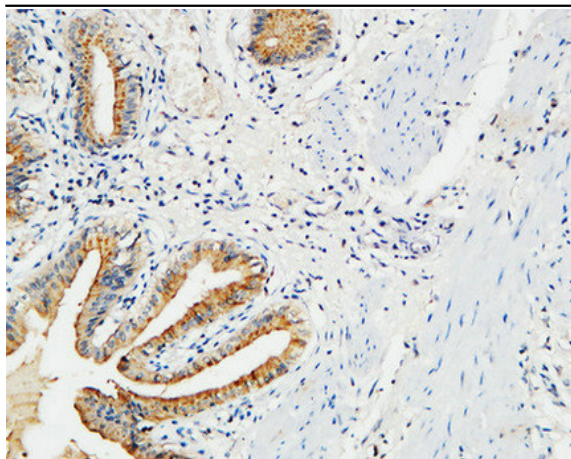
Zhou, Qiming, et al. "Uridine-cytidine kinase 2 promotes metastasis of hepatocellular carcinoma cells via the Stat3 pathway." *Cancer management and research* 10 (2018): 6339.



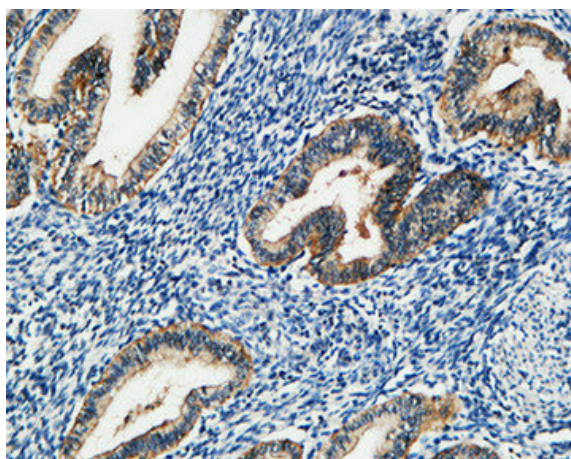
Western Blot analysis of various cells using MMP-7 Polyclonal Antibody diluted at 1:500



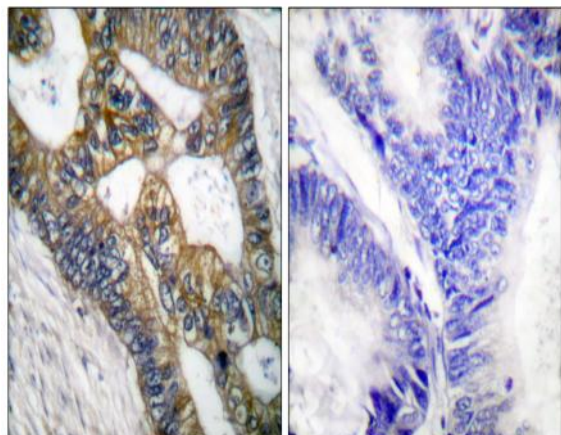
Western Blot analysis of COS7 cells using MMP-7 Polyclonal Antibody diluted at 1:500



Immunohistochemical analysis of paraffin-embedded Human gallbladder. 1, Antibody was diluted at 1:100(4° overnight). 2, High-pressure and temperature EDTA, pH8.0 was used for antigen retrieval. 3,Secondary antibody was diluted at 1:200(room temperature, 30min).



Immunohistochemical analysis of paraffin-embedded Human uterus. 1, Antibody was diluted at 1:100(4° overnight). 2, High-pressure and temperature EDTA, pH8.0 was used for antigen retrieval. 3,Secondary antibody was diluted at 1:200(room temperature, 30min).



Immunohistochemistry analysis of paraffin-embedded human colon carcinoma tissue, using MMP-7 Antibody. The picture on the right is blocked with the synthesized peptide.

