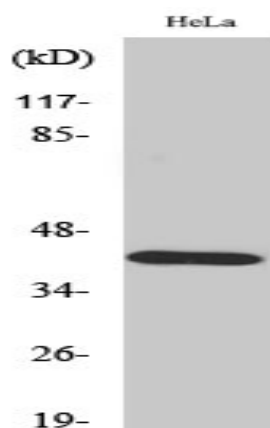


## Maspin Polyclonal Antibody

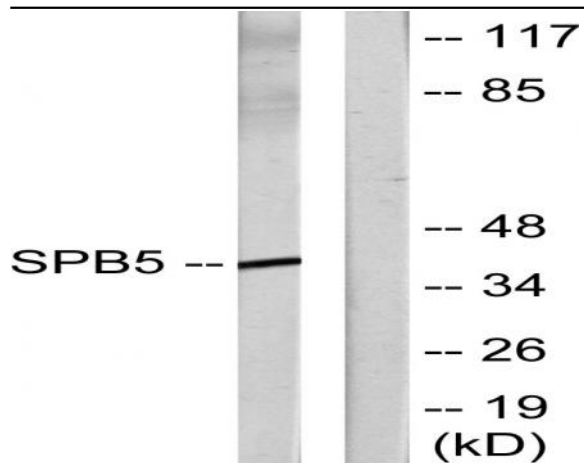
<b>Catalog No :</b>	YT2657
<b>Reactivity :</b>	Human;Mouse;Rat
<b>Applications :</b>	WB;IHC;IF;ELISA
<b>Target :</b>	Maspin
<b>Fields :</b>	>>p53 signaling pathway;>>MicroRNAs in cancer
<b>Gene Name :</b>	SERPINB5
<b>Protein Name :</b>	Serpin B5
<b>Human Gene Id :</b>	5268
<b>Human Swiss Prot No :</b>	P36952
<b>Mouse Gene Id :</b>	20724
<b>Mouse Swiss Prot No :</b>	P70124
<b>Rat Gene Id :</b>	116589
<b>Rat Swiss Prot No :</b>	P70564
<b>Immunogen :</b>	The antiserum was produced against synthesized peptide derived from human Serpin B5. AA range:91-140
<b>Specificity :</b>	Maspin Polyclonal Antibody detects endogenous levels of Maspin protein.
<b>Formulation :</b>	Liquid in PBS containing 50% glycerol, 0.5% BSA and 0.02% sodium azide.
<b>Source :</b>	Polyclonal, Rabbit,IgG
<b>Dilution :</b>	WB 1:500 - 1:2000. IHC 1:100 - 1:300. IF 1:200 - 1:1000. ELISA: 1:20000. Not yet tested in other applications.

<b>Purification :</b>	The antibody was affinity-purified from rabbit antiserum by affinity-chromatography using epitope-specific immunogen.
<b>Concentration :</b>	1 mg/ml
<b>Storage Stability :</b>	-15°C to -25°C/1 year(Do not lower than -25°C)
<b>Observed Band :</b>	40kD
<b>Cell Pathway :</b>	p53;
<b>Background :</b>	function:Tumor suppressor. It blocks the growth, invasion, and metastatic properties of mammary tumors. As it does not undergo the S (stressed) to R (relaxed) conformational transition characteristic of active serpins, it exhibits no serine protease inhibitory activity.,similarity:Belongs to the serpin family. Ov-serpin subfamily.,tissue specificity:Normal mammary epithelial cells.,
<b>Function :</b>	function:Tumor suppressor. It blocks the growth, invasion, and metastatic properties of mammary tumors. As it does not undergo the S (stressed) to R (relaxed) conformational transition characteristic of active serpins, it exhibits no serine protease inhibitory activity.,similarity:Belongs to the serpin family. Ov-serpin subfamily.,tissue specificity:Normal mammary epithelial cells.,
<b>Subcellular Location :</b>	Secreted, extracellular space.
<b>Expression :</b>	Normal mammary epithelial cells.

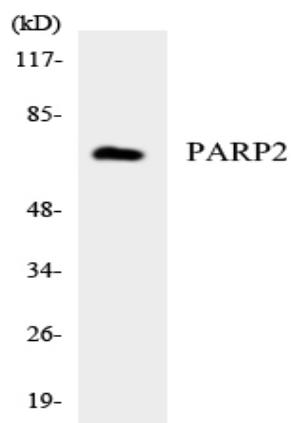
## Products Images



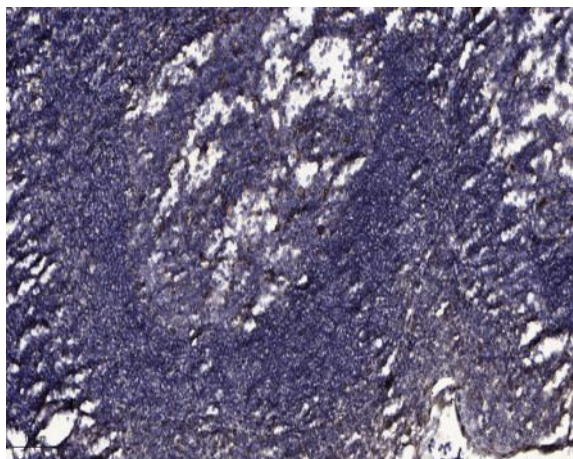
Western Blot analysis of various cells using Maspin Polyclonal Antibody



Western blot analysis of lysates from HeLa cells, using Serpin B5 Antibody. The lane on the right is blocked with the synthesized peptide.



Western blot analysis of the lysates from HeLa cells using PARP2 antibody.



Immunohistochemical analysis of paraffin-embedded human tonsil. 1, Antibody was diluted at 1:200(4° overnight). 2, Tris-EDTA,pH9.0 was used for antigen retrieval. 3,Secondary antibody was diluted at 1:200(room temperature, 30min).