

## Mas1-like Polyclonal Antibody

<b>Catalog No :</b>	YT2654
<b>Reactivity :</b>	Human;Rat;Mouse;
<b>Applications :</b>	IF;ELISA
<b>Target :</b>	Mas1-like
<b>Gene Name :</b>	MAS1L
<b>Protein Name :</b>	Mas-related G-protein coupled receptor MRG
<b>Human Gene Id :</b>	116511
<b>Human Swiss Prot No :</b>	P35410
<b>Immunogen :</b>	The antiserum was produced against synthesized peptide derived from human MAS1L. AA range:31-80
<b>Specificity :</b>	Mas1-like Polyclonal Antibody detects endogenous levels of Mas1-like protein.
<b>Formulation :</b>	Liquid in PBS containing 50% glycerol, 0.5% BSA and 0.02% sodium azide.
<b>Source :</b>	Polyclonal, Rabbit,IgG
<b>Dilution :</b>	IF 1:200 - 1:1000. ELISA: 1:5000. Not yet tested in other applications.
<b>Purification :</b>	The antibody was affinity-purified from rabbit antiserum by affinity-chromatography using epitope-specific immunogen.
<b>Concentration :</b>	1 mg/ml
<b>Storage Stability :</b>	-15°C to -25°C/1 year(Do not lower than -25°C)
<b>Molecularweight :</b>	42kD
<b>Background :</b>	similarity:Belongs to the G-protein coupled receptor 1 family.,similarity:Belongs to the G-protein coupled receptor 1 family. Mas subfamily.,

**Function :** similarity:Belongs to the G-protein coupled receptor 1 family.,similarity:Belongs to the G-protein coupled receptor 1 family. Mas subfamily.,

---

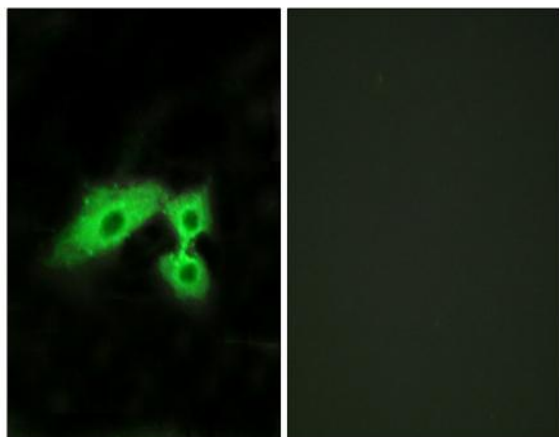
**Subcellular Location :** Cell membrane; Multi-pass membrane protein.

---

**Expression :** G-protein coupled receptors,PCR rescued clones,

---

## Products Images



Immunofluorescence analysis of HeLa cells, using MAS1L Antibody. The picture on the right is blocked with the synthesized peptide.