

## iPLA2 $\gamma$ Polyclonal Antibody

<b>Catalog No :</b>	YT2383
<b>Reactivity :</b>	Human;Mouse
<b>Applications :</b>	WB;IHC
<b>Target :</b>	iPLA2 $\gamma$
<b>Gene Name :</b>	PNPLA8
<b>Protein Name :</b>	Calcium-independent phospholipase A2-gamma
<b>Human Gene Id :</b>	50640
<b>Human Swiss Prot No :</b>	Q9NP80
<b>Mouse Gene Id :</b>	67452
<b>Mouse Swiss Prot No :</b>	Q8K1N1
<b>Immunogen :</b>	The antiserum was produced against synthesized peptide derived from human PNPLA8. AA range:691-740
<b>Specificity :</b>	iPLA2 $\gamma$ Polyclonal Antibody detects endogenous levels of iPLA2 $\gamma$ protein.
<b>Formulation :</b>	Liquid in PBS containing 50% glycerol, 0.5% BSA and 0.02% sodium azide.
<b>Source :</b>	Polyclonal, Rabbit,IgG
<b>Dilution :</b>	WB 1:500-2000;IHC 1:50-300
<b>Purification :</b>	The antibody was affinity-purified from rabbit antiserum by affinity-chromatography using epitope-specific immunogen.
<b>Concentration :</b>	1 mg/ml
<b>Storage Stability :</b>	-15°C to -25°C/1 year(Do not lower than -25°C)

**Observed Band :** 88kD

**Background :** This gene encodes a member of the patatin-like phospholipase domain containing protein family. Members of this family are phospholipases which catalyze the cleavage of fatty acids from membrane phospholipids. The product of this gene is a calcium-independent phospholipase. Mutations in this gene have been associated with mitochondrial myopathy with lactic acidosis. Multiple transcript variants encoding different isoforms have been found for this gene. [provided by RefSeq, May 2015],

**Function :** catalytic activity:2-lysophosphatidylcholine + H(2)O = glycerophosphocholine + a carboxylate.,enzyme regulation:Inhibited by E-6-bromomethylene-3-1-naphthalenyl-2H-tetrahydropyran-2-one (BEL).,function:Calcium-independent phospholipase A2, which catalyzes the hydrolysis of the sn-2 position of glycerophospholipids, PtdSer and to a lower extent PtdCho. Cleaves membrane phospholipids.,similarity:Contains 1 patatin domain.,tissue specificity:Expressed in parenchymal tissues including heart, skeletal muscle, placenta, brain, liver and pancreas. Also expressed in bronchial epithelial cells and kidney. Highest expression is observed in skeletal muscle and heart.,

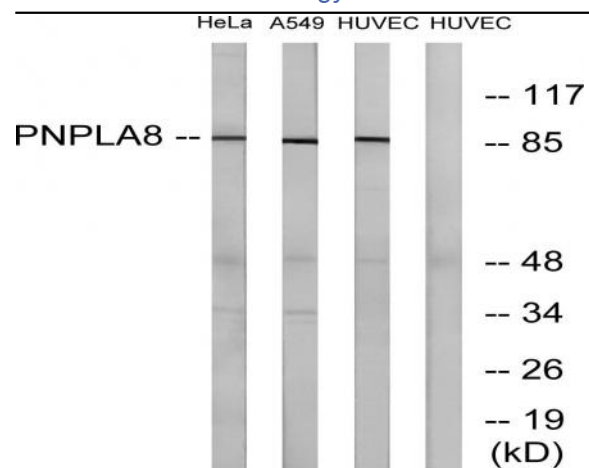
**Subcellular Location :** Endoplasmic reticulum membrane ; Single-pass membrane protein . Mitochondrion membrane ; Single-pass membrane protein . Peroxisome membrane ; Single-pass membrane protein .

**Expression :** Expressed in parenchymal tissues including heart, skeletal muscle, placenta, brain, liver and pancreas. Also expressed in bronchial epithelial cells and kidney. Highest expression is observed in skeletal muscle and heart.

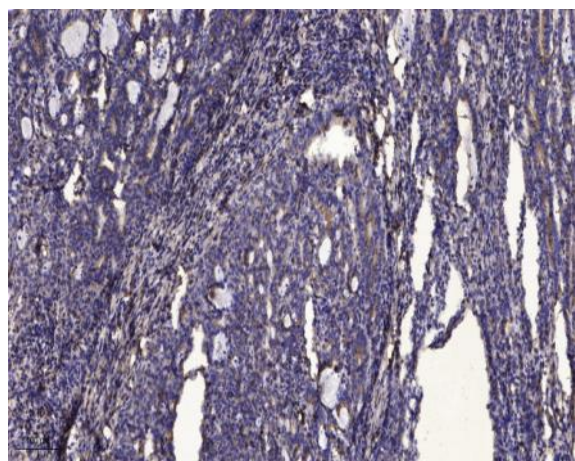
## Products Images



Western Blot analysis of various cells using iPLA2 $\gamma$  Polyclonal Antibody diluted at 1:2000



Western blot analysis of lysates from HUVEC, HeLa, and A549 cells, using PNPLA8 Antibody. The lane on the right is blocked with the synthesized peptide.



Immunohistochemical analysis of paraffin-embedded human Gastric adenocarcinoma. 1, Antibody was diluted at 1:200(4° overnight). 2, Tris-EDTA,pH9.0 was used for antigen retrieval. 3,Secondary antibody was diluted at 1:200(room temperature, 45min).