

IL-32 Polyclonal Antibody

Catalog No :	YT2332
Reactivity :	Human
Applications :	WB;IHC;IF;ELISA
Target :	IL-32
Fields :	>>Cytokine-cytokine receptor interaction
Gene Name :	IL32
Protein Name :	Interleukin-32
Human Gene Id :	9235
Human Swiss Prot No :	P24001
Immunogen :	The antiserum was produced against synthesized peptide derived from human IL-32. AA range:177-226
Specificity :	IL-32 Polyclonal Antibody detects endogenous levels of IL-32 protein.
Formulation :	Liquid in PBS containing 50% glycerol, 0.5% BSA and 0.02% sodium azide.
Source :	Polyclonal, Rabbit,IgG
Dilution :	WB 1:500 - 1:2000. IHC 1:100 - 1:300. ELISA: 1:40000.. IF 1:50-200
Purification :	The antibody was affinity-purified from rabbit antiserum by affinity-chromatography using epitope-specific immunogen.
Concentration :	1 mg/ml
Storage Stability :	-15°C to -25°C/1 year(Do not lower than -25°C)
Observed Band :	26kD

Background :

This gene encodes a member of the cytokine family. The protein contains a tyrosine sulfation site, 3 potential N-myristoylation sites, multiple putative phosphorylation sites, and an RGD cell-attachment sequence. Expression of this protein is increased after the activation of T-cells by mitogens or the activation of NK cells by IL-2. This protein induces the production of TNFalpha from macrophage cells. Alternate transcriptional splice variants, encoding different isoforms, have been characterized. [provided by RefSeq, Jul 2008],

Function :

caution:The sequence shown here is derived from an Ensembl automatic analysis pipeline and should be considered as preliminary data.,function:Cytokine that may play a role in innate and adaptive immune responses. It induces various cytokines such as TNFA/TNF-alpha and IL8. It activates typical cytokine signal pathways of NF-kappa-B and p38 MAPK.,induction:Expression increased after activation of T-cells by mitogens or activation of NK cells by IL-2.,tissue specificity:Selectively expressed in lymphocytes. Expression more prominent in immune cells than in non-immune cells.,

Subcellular Location :

Secreted .

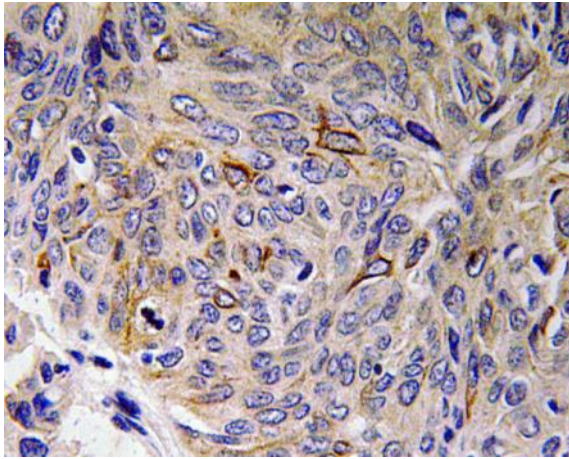
Expression :

Selectively expressed in lymphocytes. Expression is more prominent in immune cells than in non-immune cells.

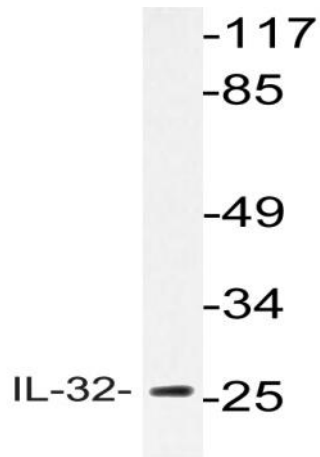
Products Images



Western Blot analysis of various cells using IL-32 Polyclonal Antibody



Immunohistochemistry analysis of IL-32 antibody in paraffin-embedded human lung carcinoma tissue.



Western blot analysis of lysate from HepG2 cells, using IL-32 antibody.