

MLF1 Polyclonal Antibody

Catalog No :	YT2779
Reactivity :	Human;Mouse
Applications :	WB;IHC
Target :	MLF1
Fields :	>>Transcriptional misregulation in cancer
Gene Name :	MLF1
Protein Name :	Myeloid leukemia factor 1
Human Gene Id :	4291
Human Swiss Prot No :	P58340
Mouse Gene Id :	17349
Mouse Swiss Prot No :	Q9QWV4
Immunogen :	Synthesized peptide derived from MLF1 . at AA range: 130-210
Specificity :	MLF1 Polyclonal Antibody detects endogenous levels of MLF1 protein.
Formulation :	Liquid in PBS containing 50% glycerol, 0.5% BSA and 0.02% sodium azide.
Source :	Polyclonal, Rabbit,IgG
Dilution :	WB 1:500-2000;IHC 1:50-300
Purification :	The antibody was affinity-purified from rabbit antiserum by affinity-chromatography using epitope-specific immunogen.
Concentration :	1 mg/ml

Storage Stability : -15°C to -25°C/1 year (Do not lower than -25°C)

Observed Band : 30kD

Background : myeloid leukemia factor 1 (MLF1) Homo sapiens This gene encodes an oncoprotein which is thought to play a role in the phenotypic determination of hemopoietic cells. Translocations between this gene and nucleophosmin have been associated with myelodysplastic syndrome and acute myeloid leukemia. Multiple transcript variants encoding different isoforms have been found for this gene. [provided by RefSeq, Sep 2010],

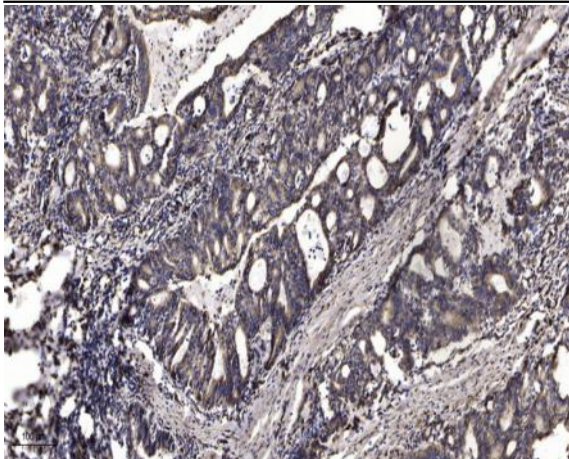
Function : disease: A chromosomal aberration involving MLF1 is a cause of myelodysplastic syndrome (MDS). Translocation t(3;5)(q25.1;q34) with NPM1/NPM., function: Involved in lineage commitment of primary hemopoietic progenitors by restricting erythroid formation and enhancing myeloid formation. Interferes with erythropoietin-induced erythroid terminal differentiation by preventing cells from exiting the cell cycle through suppression of CDKN1B/p27Kip1 levels. Suppresses RFW2/COP1 activity via CSN3 which activates p53 and induces cell cycle arrest. Binds DNA and affects the expression of a number of genes so may function as a transcription factor in the nucleus., PTM: Phosphorylation is required for binding to YWHAZ., similarity: Belongs to the MLF family., subcellular location: In non-hematopoietic cells, resides primarily in the cytoplasm with some punctate nuclear localization. Shuttles between the cyto

Subcellular Location : Cytoplasm . Nucleus . Cell projection, cilium . Cytoplasm, cytoskeleton, cilium basal body . Shuttles between the cytoplasm and nucleus. .

Expression : Most abundant in testis, ovary, skeletal muscle, heart, kidney and colon. Low expression in spleen, thymus and peripheral blood leukocytes.

Products Images





Immunohistochemical analysis of paraffin-embedded human Gastric adenocarcinoma. 1, Antibody was diluted at 1:200(4 ° overnight). 2, Tris-EDTA,pH9.0 was used for antigen retrieval. 3,Secondary antibody was diluted at 1:200(room temperature, 45min).