

## IL-21 Polyclonal Antibody

<b>Catalog No :</b>	YT2327
<b>Reactivity :</b>	Human;Mouse
<b>Applications :</b>	WB;ELISA
<b>Target :</b>	IL-21
<b>Fields :</b>	>>Cytokine-cytokine receptor interaction;>>JAK-STAT signaling pathway;>>Th17 cell differentiation;>>Inflammatory bowel disease
<b>Gene Name :</b>	IL21
<b>Protein Name :</b>	Interleukin-21
<b>Human Gene Id :</b>	59067
<b>Human Swiss Prot No :</b>	Q9HBE4
<b>Mouse Gene Id :</b>	60505
<b>Mouse Swiss Prot No :</b>	Q9ES17
<b>Immunogen :</b>	The antiserum was produced against synthesized peptide derived from human IL21. AA range:91-140
<b>Specificity :</b>	IL-21 Polyclonal Antibody detects endogenous levels of IL-21 protein.
<b>Formulation :</b>	Liquid in PBS containing 50% glycerol, 0.5% BSA and 0.02% sodium azide.
<b>Source :</b>	Polyclonal, Rabbit,IgG
<b>Dilution :</b>	WB 1:500 - 1:2000. ELISA: 1:20000. Not yet tested in other applications.
<b>Purification :</b>	The antibody was affinity-purified from rabbit antiserum by affinity-chromatography using epitope-specific immunogen.
<b>Concentration :</b>	1 mg/ml

**Storage Stability :** -15°C to -25°C/1 year(Do not lower than -25°C)

**Observed Band :** 18kD

**Cell Pathway :** Cytokine-cytokine receptor interaction;Jak\_STAT;

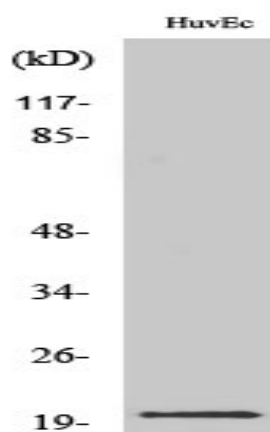
**Background :** This gene encodes a member of the common-gamma chain family of cytokines with immunoregulatory activity. The encoded protein plays a role in both the innate and adaptive immune responses by inducing the differentiation, proliferation and activity of multiple target cells including macrophages, natural killer cells, B cells and cytotoxic T cells. Dysregulation of this gene plays a role in multiple immune-mediated diseases including lupus, psoriasis and chronic inflammatory diseases. Alternatively spliced transcript variants encoding multiple isoforms have been observed for this gene. [provided by RefSeq, Dec 2011],

**Function :** function:Cytokine with immunoregulatory activity. May promote the transition between innate and adaptive immunity. Induces the production of IgG(1) and IgG(3) in B-cells (By similarity). May play a role in proliferation and maturation of natural killer (NK) cells in synergy with IL15. May regulate proliferation of mature B- and T-cells in response to activating stimuli. In synergy with IL15 and IL18 stimulates interferon gamma production in T-cells and NK cells. During T-cell mediated immune response may inhibit dendritic cells (DC) activation and maturation.,similarity:Belongs to the IL-15/IL-21 family.,tissue specificity:Expressed in activated CD4-positive T-cells but not in CD8-positive T-cells, B-cells, or monocytes.,

**Subcellular Location :** Secreted .

**Expression :** Expressed in activated CD4-positive T-cells but not in CD8-positive T-cells, B-cells, or monocytes.

## Products Images



Western Blot analysis of various cells using IL-21 Polyclonal Antibody diluted at 1:500