

LRP11 Polyclonal Antibody

Catalog No :	YT2591
Reactivity :	Human;Rat;Mouse;
Applications :	WB;IHC
Target :	LRP11
Gene Name :	LRP11
Protein Name :	Low-density lipoprotein receptor-related protein 11
Human Gene Id :	84918
Human Swiss Prot No :	Q86VZ4
Mouse Swiss Prot No :	Q8CB67
Immunogen :	The antiserum was produced against synthesized peptide derived from human LRP11. AA range:48-97
Specificity :	LRP11 Polyclonal Antibody detects endogenous levels of LRP11 protein.
Formulation :	Liquid in PBS containing 50% glycerol, 0.5% BSA and 0.02% sodium azide.
Source :	Polyclonal, Rabbit,IgG
Dilution :	WB 1:500-2000;IHC 1:50-300
Purification :	The antibody was affinity-purified from rabbit antiserum by affinity-chromatography using epitope-specific immunogen.
Concentration :	1 mg/ml
Storage Stability :	-15°C to -25°C/1 year(Do not lower than -25°C)
Observed Band :	50kD

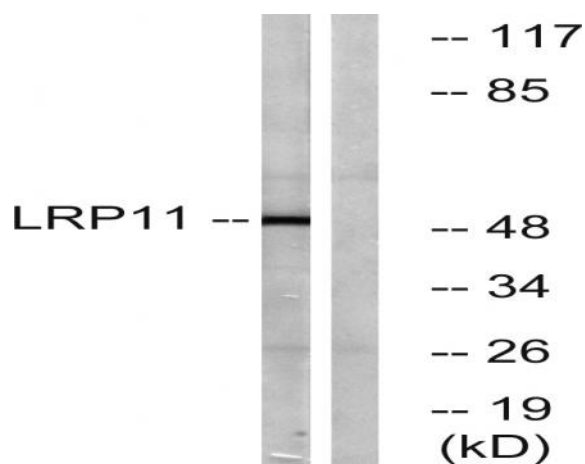
Background : similarity:Belongs to the LDLR family.,similarity:Contains 1 LDL-receptor class A domain.,similarity:Contains 1 MANSC domain.,similarity:Contains 1 PKD domain.,

Function : similarity:Belongs to the LDLR family.,similarity:Contains 1 LDL-receptor class A domain.,similarity:Contains 1 MANSC domain.,similarity:Contains 1 PKD domain.,

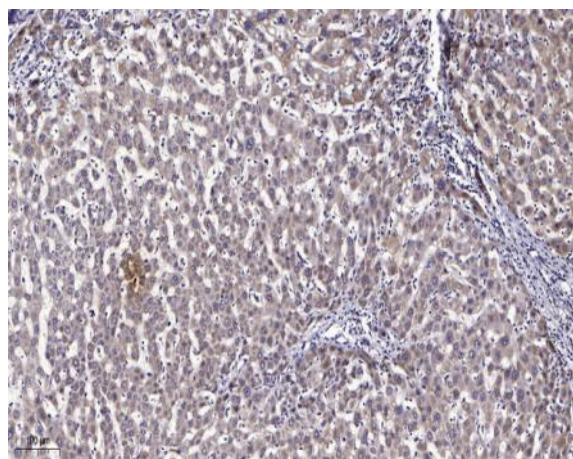
Subcellular Location : Membrane ; Single-pass type I membrane protein .

Expression : Brain,Skin,

Products Images



Western blot analysis of lysates from Jurkat cells, using LRP11 Antibody. The lane on the right is blocked with the synthesized peptide.



Immunohistochemical analysis of paraffin-embedded human liver cancer. 1, Antibody was diluted at 1:200(4° overnight). 2, Tris-EDTA,pH9.0 was used for antigen retrieval. 3,Secondary antibody was diluted at 1:200(room temperature, 45min).