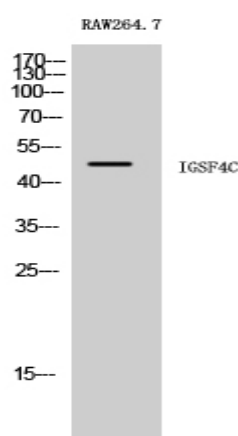


## IGSF4C Polyclonal Antibody

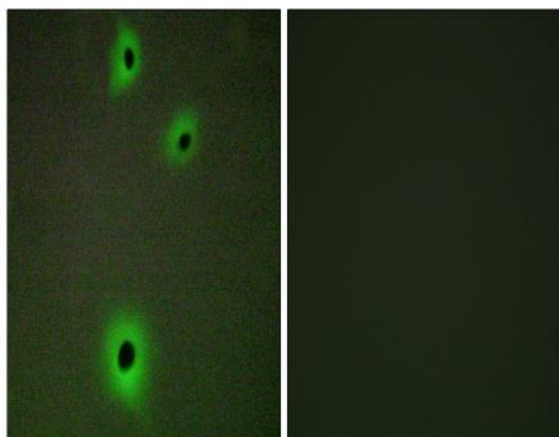
<b>Catalog No :</b>	YT2295
<b>Reactivity :</b>	Human;Mouse;Rat
<b>Applications :</b>	WB;IHC;IF;ELISA
<b>Target :</b>	IGSF4C
<b>Gene Name :</b>	CADM4
<b>Protein Name :</b>	Cell adhesion molecule 4
<b>Human Gene Id :</b>	199731
<b>Human Swiss Prot No :</b>	Q8NFZ8
<b>Mouse Gene Id :</b>	260299
<b>Mouse Swiss Prot No :</b>	Q8R464
<b>Rat Gene Id :</b>	365216
<b>Rat Swiss Prot No :</b>	Q1WIM1
<b>Immunogen :</b>	The antiserum was produced against synthesized peptide derived from human CADM4. AA range:339-388
<b>Specificity :</b>	IGSF4C Polyclonal Antibody detects endogenous levels of IGSF4C protein.
<b>Formulation :</b>	Liquid in PBS containing 50% glycerol, 0.5% BSA and 0.02% sodium azide.
<b>Source :</b>	Polyclonal, Rabbit,IgG
<b>Dilution :</b>	WB 1:500 - 1:2000. IHC 1:100 - 1:300. IF 1:200 - 1:1000. ELISA: 1:20000. Not yet tested in other applications.
<b>Purification :</b>	The antibody was affinity-purified from rabbit antiserum by affinity-chromatography using epitope-specific immunogen.

<b>Concentration :</b>	1 mg/ml
<b>Storage Stability :</b>	-15°C to -25°C/1 year(Do not lower than -25°C)
<b>Observed Band :</b>	48kD
<b>Background :</b>	function:Involved in the cell-cell adhesion. Has calcium- and magnesium-independent cell-cell adhesion activity. May have tumor-suppressor activity.,PTM:N-glycosylated.,similarity:Belongs to the nectin family.,similarity:Contains 1 Ig-like V-type (immunoglobulin-like) domain.,similarity:Contains 2 Ig-like C2-type (immunoglobulin-like) domains.,subunit:Monomer and homodimer.,tissue specificity:Expressed in brain, prostate, brain, kidney and some other organs.,
<b>Function :</b>	function:Involved in the cell-cell adhesion. Has calcium- and magnesium-independent cell-cell adhesion activity. May have tumor-suppressor activity.,PTM:N-glycosylated.,similarity:Belongs to the nectin family.,similarity:Contains 1 Ig-like V-type (immunoglobulin-like) domain.,similarity:Contains 2 Ig-like C2-type (immunoglobulin-like) domains.,subunit:Monomer and homodimer.,tissue specificity:Expressed in brain, prostate, brain, kidney and some other organs.,
<b>Subcellular Location :</b>	Membrane ; Single-pass type I membrane protein .
<b>Expression :</b>	Expressed in brain, prostate, brain, kidney and some other organs.

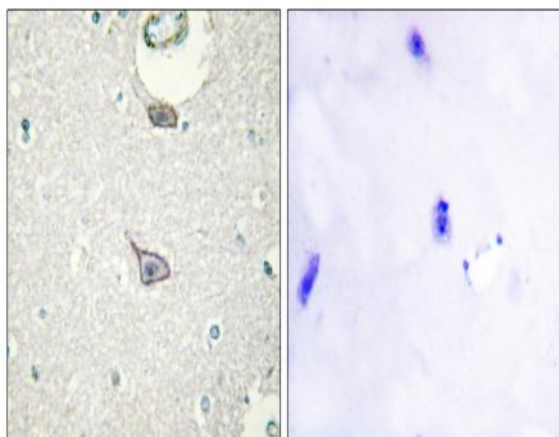
## Products Images



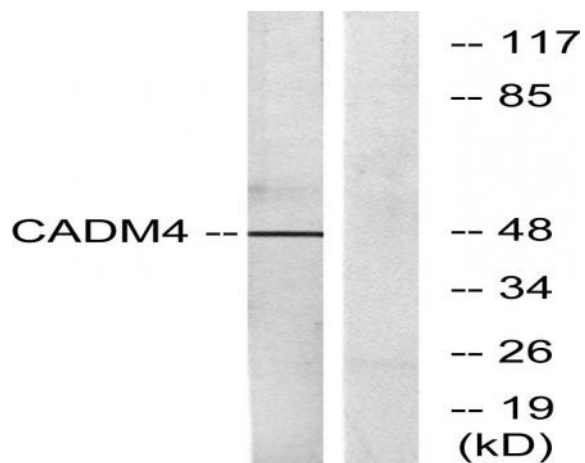
Western Blot analysis of RAW264.7 cells using IGSF4C Polyclonal Antibody



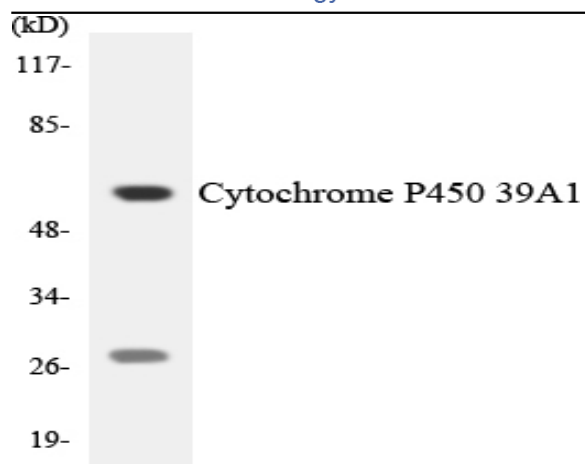
Immunofluorescence analysis of A549 cells, using CADM4 Antibody. The picture on the right is blocked with the synthesized peptide.



Immunohistochemistry analysis of paraffin-embedded human brain tissue, using CADM4 Antibody. The picture on the right is blocked with the synthesized peptide.



Western blot analysis of lysates from RAW264.7 cells, using CADM4 Antibody. The lane on the right is blocked with the synthesized peptide.



Western blot analysis of the lysates from HeLa cells using Cytochrome P450 39A1 antibody.