

LMTK3 Polyclonal Antibody

Catalog No :	YT2576
Reactivity :	Human;Mouse
Applications :	WB;IHC;IF;ELISA
Target :	LMTK3
Gene Name :	LMTK3
Protein Name :	Serine/threonine-protein kinase LMTK3
Human Gene Id :	114783
Human Swiss Prot No :	Q96Q04
Mouse Gene Id :	381983
Mouse Swiss Prot No :	Q5XJV6
Immunogen :	The antiserum was produced against synthesized peptide derived from human LMTK3. AA range:1251-1300
Specificity :	LMTK3 Polyclonal Antibody detects endogenous levels of LMTK3 protein.
Formulation :	Liquid in PBS containing 50% glycerol, 0.5% BSA and 0.02% sodium azide.
Source :	Polyclonal, Rabbit,IgG
Dilution :	WB 1:500 - 1:2000. IHC 1:100 - 1:300. ELISA: 1:20000.. IF 1:50-200
Purification :	The antibody was affinity-purified from rabbit antiserum by affinity-chromatography using epitope-specific immunogen.
Concentration :	1 mg/ml
Storage Stability :	-15°C to -25°C/1 year(Do not lower than -25°C)

Observed Band : 40kD

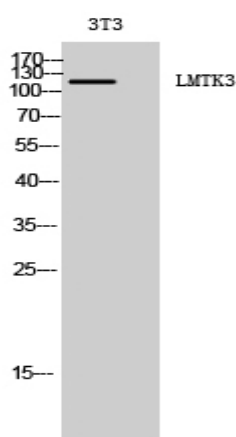
Background : catalytic activity:ATP + a protein = ADP + a phosphoprotein.,similarity:Belongs to the protein kinase superfamily. Tyr protein kinase family.,similarity:Contains 1 protein kinase domain.,

Function : catalytic activity:ATP + a protein = ADP + a phosphoprotein.,similarity:Belongs to the protein kinase superfamily. Tyr protein kinase family.,similarity:Contains 1 protein kinase domain.,

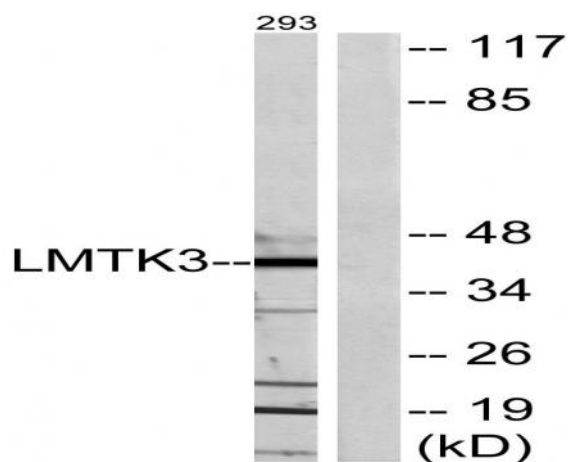
Subcellular Location : Membrane ; Single-pass membrane protein . Cell projection, axon . Cell projection, dendrite . Golgi apparatus membrane . Punctate pattern in cell projections.

Expression : Brain,

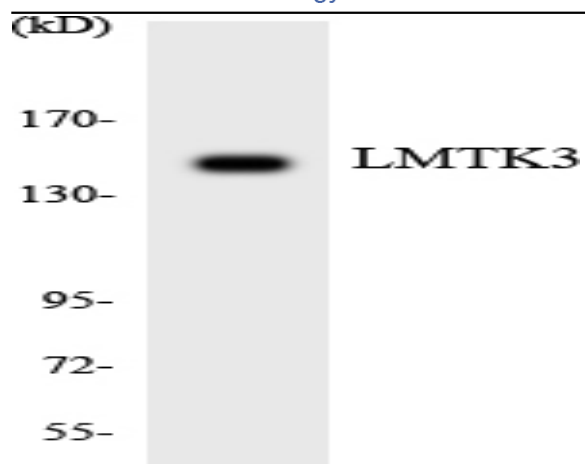
Products Images



Western Blot analysis of 3T3 cells using LMTK3 Polyclonal Antibody diluted at 1:2000



Western blot analysis of lysates from 293 cells, using LMTK3 Antibody. The lane on the right is blocked with the synthesized peptide.



Western blot analysis of the lysates from HeLa cells using LMTK3 antibody.