

**LDOC1L Polyclonal Antibody**

<b>Catalog No :</b>	YT2553
<b>Reactivity :</b>	Human;Mouse
<b>Applications :</b>	WB;IHC;IF;ELISA
<b>Target :</b>	LDOC1L
<b>Gene Name :</b>	LDOC1L
<b>Protein Name :</b>	Protein LDOC1L
<b>Human Gene Id :</b>	84247
<b>Human Swiss Prot No :</b>	Q6ICC9
<b>Mouse Gene Id :</b>	223732
<b>Mouse Swiss Prot No :</b>	Q505G4
<b>Immunogen :</b>	The antiserum was produced against synthesized peptide derived from human LDOC1L. AA range:141-190
<b>Specificity :</b>	LDOC1L Polyclonal Antibody detects endogenous levels of LDOC1L protein.
<b>Formulation :</b>	Liquid in PBS containing 50% glycerol, 0.5% BSA and 0.02% sodium azide.
<b>Source :</b>	Polyclonal, Rabbit,IgG
<b>Dilution :</b>	WB 1:500 - 1:2000. IHC 1:100 - 1:300. ELISA: 1:20000.. IF 1:50-200
<b>Purification :</b>	The antibody was affinity-purified from rabbit antiserum by affinity-chromatography using epitope-specific immunogen.
<b>Concentration :</b>	1 mg/ml
<b>Storage Stability :</b>	-15°C to -25°C/1 year(Do not lower than -25°C)

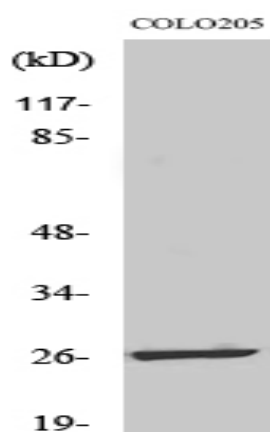
**Observed Band :** 24kD

**Background :** similarity:Belongs to the LDOC1 family.,

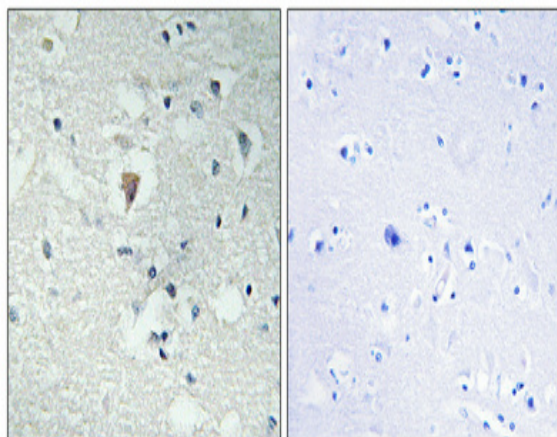
**Function :** similarity:Belongs to the LDOC1 family.,

**Expression :** Amygdala,Brain,Trachea,

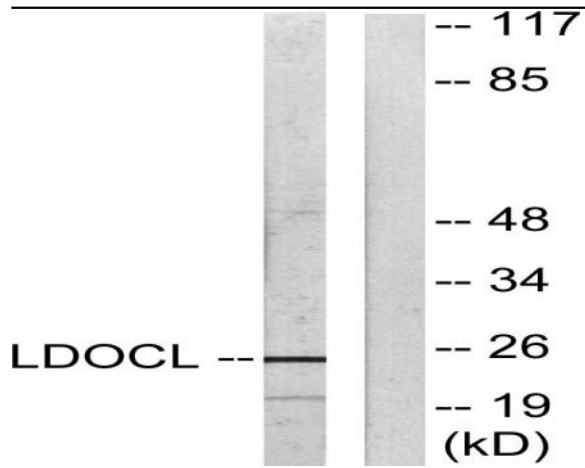
## Products Images



Western Blot analysis of various cells using LDOC1L Polyclonal Antibody



Immunohistochemical analysis of paraffin-embedded Human brain. Antibody was diluted at 1:100(4° overnight). High-pressure and temperature Tris-EDTA,pH8.0 was used for antigen retrieval. Negative contrl (right) obtaned from antibody was pre-absorbed by immunogen peptide.



Western blot analysis of lysates from COLO205 cells, using LDOC1L Antibody. The lane on the right is blocked with the synthesized peptide.