

## HLA-H Polyclonal Antibody

<b>Catalog No :</b>	YT2180
<b>Reactivity :</b>	Human
<b>Applications :</b>	WB;ELISA
<b>Target :</b>	HLA-H
<b>Gene Name :</b>	HLA-H
<b>Protein Name :</b>	Putative HLA class I histocompatibility antigen alpha chain H
<b>Human Gene Id :</b>	3136
<b>Human Swiss Prot No :</b>	P01893
<b>Immunogen :</b>	The antiserum was produced against synthesized peptide derived from human HLAH. AA range:71-120
<b>Specificity :</b>	HLA-H Polyclonal Antibody detects endogenous levels of HLA-H protein.
<b>Formulation :</b>	Liquid in PBS containing 50% glycerol, 0.5% BSA and 0.02% sodium azide.
<b>Source :</b>	Polyclonal, Rabbit,IgG
<b>Dilution :</b>	WB 1:500 - 1:2000. ELISA: 1:10000. Not yet tested in other applications.
<b>Purification :</b>	The antibody was affinity-purified from rabbit antiserum by affinity-chromatography using epitope-specific immunogen.
<b>Concentration :</b>	1 mg/ml
<b>Storage Stability :</b>	-15°C to -25°C/1 year(Do not lower than -25°C)
<b>Observed Band :</b>	40kD
<b>Background :</b>	This major histocompatibility complex gene represents a transcribed pseudogene, possibly derived from HLA-A. This gene displays extensive

variation. [provided by RefSeq, May 2010],

**Function :**

caution:Could be the product of a pseudogene.,function:Involved in the presentation of foreign antigens to the immune system.,similarity:Belongs to the MHC class I family.,similarity:Contains 1 Ig-like C1-type (immunoglobulin-like) domain.,subunit:Heterodimer of an alpha chain and a beta chain (beta-2-microglobulin).,

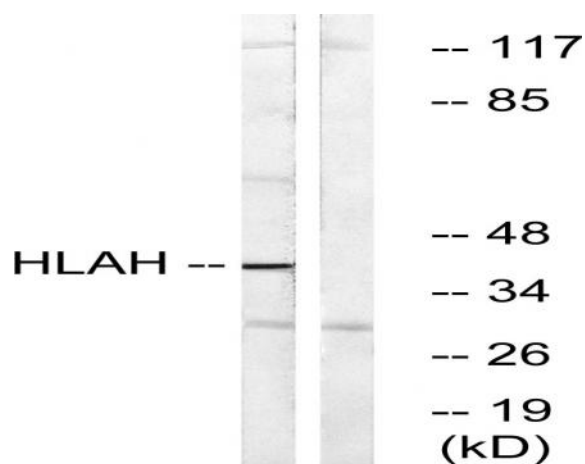
**Subcellular Location :**

Cell membrane ; Single-pass membrane protein .

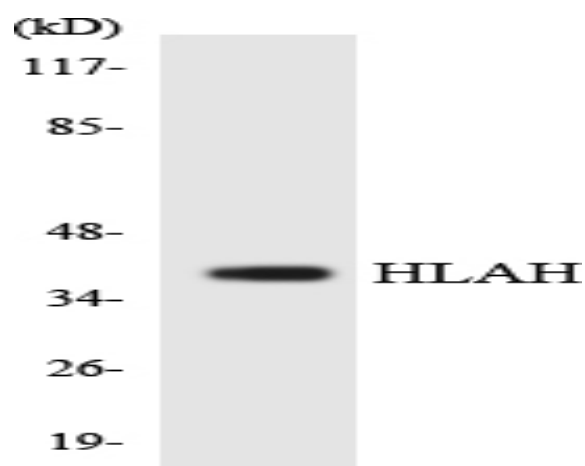
**Expression :**

Platelet,

## Products Images



Western blot analysis of lysates from LOVO cells, using HLAH Antibody. The lane on the right is blocked with the synthesized peptide.



Western blot analysis of the lysates from HT-29 cells using HLAH antibody.