

## KEPI Polyclonal Antibody

<b>Catalog No :</b>	YT2464
<b>Reactivity :</b>	Human;Mouse;Rat
<b>Applications :</b>	WB;IHC;IF;ELISA
<b>Target :</b>	KEPI
<b>Gene Name :</b>	PPP1R14C
<b>Protein Name :</b>	Protein phosphatase 1 regulatory subunit 14C
<b>Human Gene Id :</b>	81706
<b>Human Swiss Prot No :</b>	Q8TAE6
<b>Mouse Gene Id :</b>	76142
<b>Mouse Swiss Prot No :</b>	Q8R4S0
<b>Rat Gene Id :</b>	171010
<b>Rat Swiss Prot No :</b>	Q8R4R9
<b>Immunogen :</b>	The antiserum was produced against synthesized peptide derived from human PPP1R14C. AA range:51-100
<b>Specificity :</b>	KEPI Polyclonal Antibody detects endogenous levels of KEPI protein.
<b>Formulation :</b>	Liquid in PBS containing 50% glycerol, 0.5% BSA and 0.02% sodium azide.
<b>Source :</b>	Polyclonal, Rabbit,IgG
<b>Dilution :</b>	WB 1:500 - 1:2000. IHC 1:100 - 1:300. IF 1:200 - 1:1000. ELISA: 1:20000. Not yet tested in other applications.
<b>Purification :</b>	The antibody was affinity-purified from rabbit antiserum by affinity-chromatography using epitope-specific immunogen.

**Concentration :** 1 mg/ml

**Storage Stability :** -15°C to -25°C/1 year(Do not lower than -25°C)

**Observed Band :** 20kD

**Background :** The degree of protein phosphorylation is regulated by a balance of protein kinase and phosphatase activities. Protein phosphatase-1 (PP1; see MIM 176875) is a signal-transducing phosphatase that influences neuronal activity, protein synthesis, metabolism, muscle contraction, and cell division. PPP1R14C is an inhibitor of PP1 (Liu et al., 2002 [PubMed 11812771]).[supplied by OMIM, Feb 2010],

**Function :** function:Inhibitor of PPP1CA. Has over 600-fold higher inhibitory activity when phosphorylated, creating a molecular switch for regulating the phosphorylation status of PPP1CA substrates and smooth muscle contraction.,similarity:Belongs to the PP1 inhibitor family.,tissue specificity:Detected in breast cancer.,

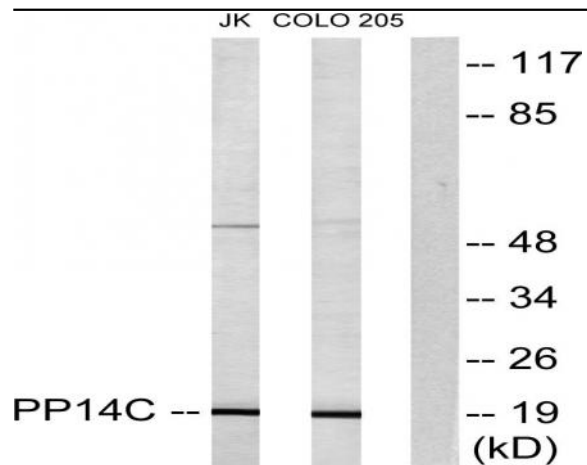
**Subcellular Location :** Cytoplasm . Membrane ; Peripheral membrane protein .

**Expression :** Detected in breast cancer.

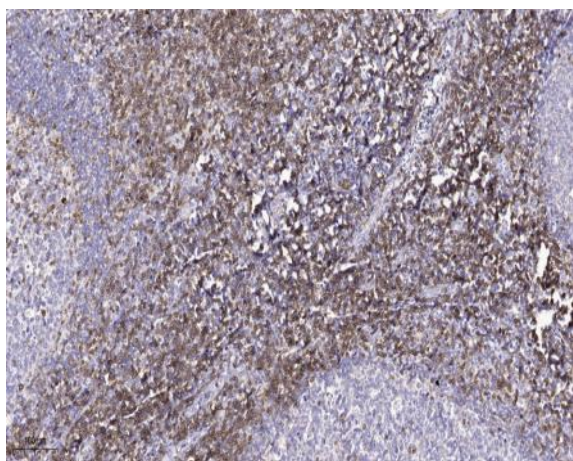
## Products Images



Western Blot analysis of various cells using KEPI Polyclonal Antibody diluted at 1:1000



Western blot analysis of lysates from Jurkat and COLO205 cells, using PPP1R14C Antibody. The lane on the right is blocked with the synthesized peptide.



Immunohistochemical analysis of paraffin-embedded human tonsil. 1, Tris-EDTA, pH 9.0 was used for antigen retrieval. 2 Antibody was diluted at 1:200 (4° overnight). 3, Secondary antibody was diluted at 1:200 (room temperature, 45min).