

I κ B- ϵ Polyclonal Antibody

Catalog No :	YT2422
Reactivity :	Human;Mouse;Rat
Applications :	WB;IHC;IF;ELISA
Target :	I κ B- ϵ
Fields :	>>Th1 and Th2 cell differentiation;>>Th17 cell differentiation;>>T cell receptor signaling pathway;>>B cell receptor signaling pathway;>>Neurotrophin signaling pathway;>>Adipocytokine signaling pathway;>>Epstein-Barr virus infection;>>PD-L1 expression and PD-1 checkpoint pathway in cancer
Gene Name :	NFKBIE
Protein Name :	NF-kappa-B inhibitor epsilon
Human Gene Id :	4794
Human Swiss Prot No :	O00221
Mouse Gene Id :	18037
Mouse Swiss Prot No :	O54910
Immunogen :	The antiserum was produced against synthesized peptide derived from human I κ appaB-epsilon. AA range:131-180
Specificity :	I κ B- ϵ Polyclonal Antibody detects endogenous levels of I κ B- ϵ protein.
Formulation :	Liquid in PBS containing 50% glycerol, 0.5% BSA and 0.02% sodium azide.
Source :	Polyclonal, Rabbit,IgG
Dilution :	WB 1:500 - 1:2000. IHC 1:100 - 1:300. IF 1:200 - 1:1000. ELISA: 1:40000. Not yet tested in other applications.
Purification :	The antibody was affinity-purified from rabbit antiserum by affinity-

chromatography using epitope-specific immunogen.

Concentration : 1 mg/ml

Storage Stability : -15°C to -25°C/1 year(Do not lower than -25°C)

Observed Band : 45kD

Cell Pathway : T_Cell_Receptor;B_Cell_Antigen;Neurotrophin;Adipocytokine;

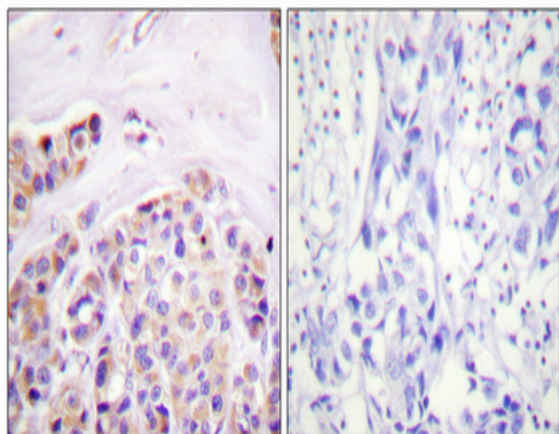
Background : The protein encoded by this gene binds to components of NF-kappa-B, trapping the complex in the cytoplasm and preventing it from activating genes in the nucleus. Phosphorylation of the encoded protein targets it for destruction by the ubiquitin pathway, which activates NF-kappa-B by making it available to translocate to the nucleus. [provided by RefSeq, Sep 2011],

Function : function:Inhibits NF-kappa-B by complexing with and trapping it in the cytoplasm. Inhibits DNA-binding of NF-kappa-B p50-p65 and p50-c-Rel complexes.,PTM:Serine phosphorylated; followed by proteasome-dependent degradation.,similarity:Belongs to the NF-kappa-B inhibitor family.,similarity:Contains 6 ANK repeats.,subunit:Interacts with RELA, REL, NFKB1 nuclear factor NF-kappa-B p50 subunit and NFKB2 nuclear factor NF-kappa-B p52 subunit.,tissue specificity:Highly expressed in spleen, testis and lung, followed by kidney, pancreas, heart, placenta and brain. Also expressed in granulocytes and macrophages.,

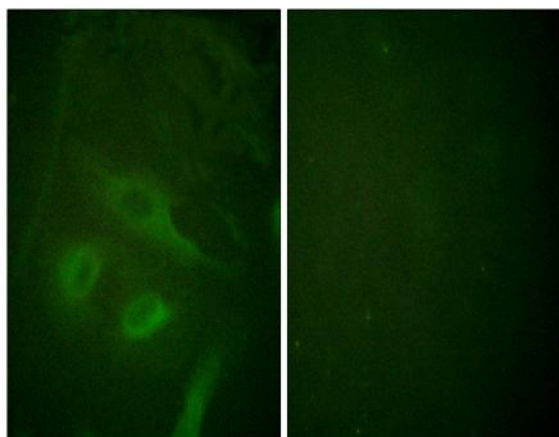
Subcellular Location : Cytoplasm .

Expression : Highly expressed in spleen, testis and lung, followed by kidney, pancreas, heart, placenta and brain. Also expressed in granulocytes and macrophages.

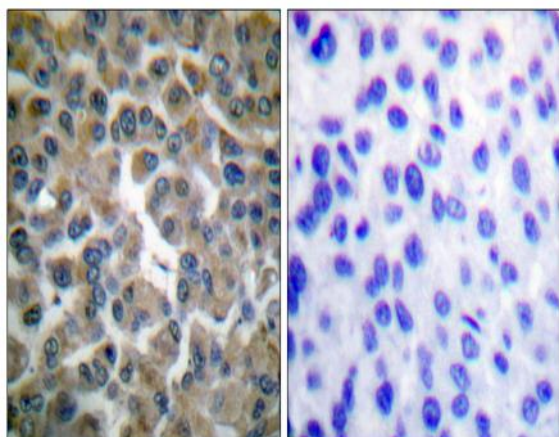
Products Images



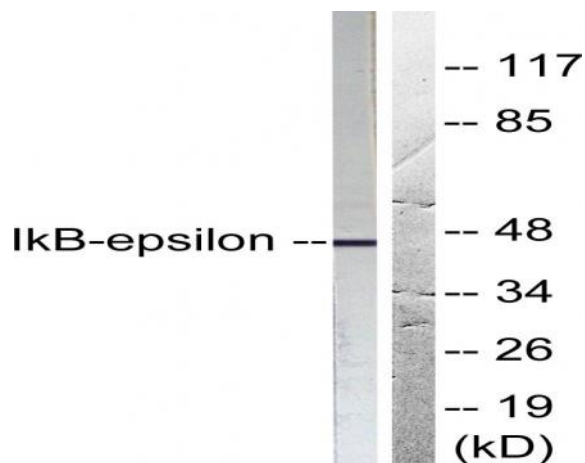
Immunohistochemical analysis of paraffin-embedded Human breast cancer. Antibody was diluted at 1:100(4° overnight). High-pressure and temperature Tris-EDTA,pH8.0 was used for antigen retrieval. Negative control (right) obtained from antibody was pre-absorbed by immunogen peptide.



Immunofluorescence analysis of HeLa cells, using IkappaB-epsilon Antibody. The picture on the right is blocked with the synthesized peptide.



Immunohistochemistry analysis of paraffin-embedded human breast carcinoma tissue, using IkappaB-epsilon Antibody. The picture on the right is blocked with the synthesized peptide.



Western blot analysis of lysates from HeLa cells, treated with TNF-a 20ng/ml 5', using IkappaB-epsilon Antibody. The lane on the right is blocked with the synthesized peptide.