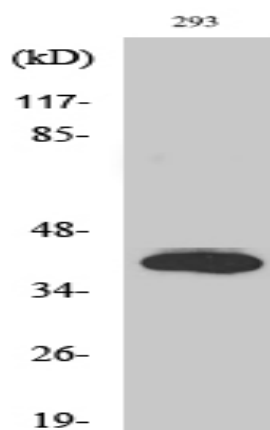


Islet-2 Polyclonal Antibody

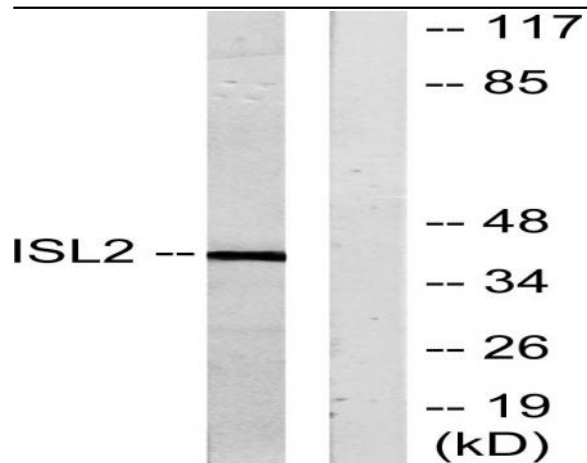
Catalog No :	YT2415
Reactivity :	Human;Mouse;Rat
Applications :	WB;IHC
Target :	Islet-2
Gene Name :	ISL2
Protein Name :	Insulin gene enhancer protein ISL-2
Human Gene Id :	64843
Human Swiss Prot No :	Q96A47
Mouse Gene Id :	104360
Mouse Swiss Prot No :	Q9CXV0
Rat Gene Id :	57233
Rat Swiss Prot No :	P50480
Immunogen :	The antiserum was produced against synthesized peptide derived from human ISL2. AA range:161-210
Specificity :	Islet-2 Polyclonal Antibody detects endogenous levels of Islet-2 protein.
Formulation :	Liquid in PBS containing 50% glycerol, 0.5% BSA and 0.02% sodium azide.
Source :	Polyclonal, Rabbit,IgG
Dilution :	WB 1:500-2000;IHC 1:50-300
Purification :	The antibody was affinity-purified from rabbit antiserum by affinity-chromatography using epitope-specific immunogen.

Concentration :	1 mg/ml
Storage Stability :	-15°C to -25°C/1 year(Do not lower than -25°C)
Observed Band :	40kD
Background :	function:Transcriptional factor that defines subclasses of motoneurons that segregate into columns in the spinal cord and select distinct axon pathways.,similarity:Contains 1 homeobox DNA-binding domain.,similarity:Contains 2 LIM zinc-binding domains.,
Function :	function:Transcriptional factor that defines subclasses of motoneurons that segregate into columns in the spinal cord and select distinct axon pathways.,similarity:Contains 1 homeobox DNA-binding domain.,similarity:Contains 2 LIM zinc-binding domains.,
Subcellular Location :	Nucleus .
Expression :	Epithelium, Eye,

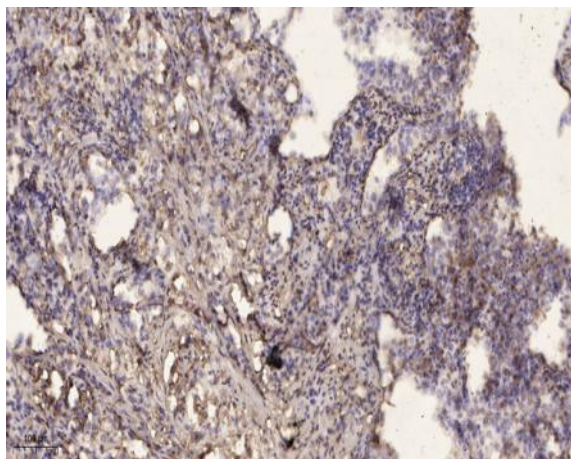
Products Images



Western Blot analysis of various cells using Islet-2 Polyclonal Antibody diluted at 1:500 cells nucleus extracted by Minute TM Cytoplasmic and Nuclear Fractionation kit (SC-003, Inventbiotech, MN, USA).



Western blot analysis of lysates from 293 cells, using ISL2 Antibody. The lane on the right is blocked with the synthesized peptide.



Immunohistochemical analysis of paraffin-embedded human lung cancer. 1, Antibody was diluted at 1:200(4° overnight). 2, Tris-EDTA,pH9.0 was used for antigen retrieval. 3,Secondary antibody was diluted at 1:200(room temperature, 45min).