

iPLA2 γ Polyclonal Antibody

Catalog No :	YT2383
Reactivity :	Human;Mouse
Applications :	WB;IHC
Target :	iPLA2 γ
Gene Name :	PNPLA8
Protein Name :	Calcium-independent phospholipase A2-gamma
Human Gene Id :	50640
Human Swiss Prot No :	Q9NP80
Mouse Gene Id :	67452
Mouse Swiss Prot No :	Q8K1N1
Immunogen :	The antiserum was produced against synthesized peptide derived from human PNPLA8. AA range:691-740
Specificity :	iPLA2 γ Polyclonal Antibody detects endogenous levels of iPLA2 γ protein.
Formulation :	Liquid in PBS containing 50% glycerol, 0.5% BSA and 0.02% sodium azide.
Source :	Polyclonal, Rabbit,IgG
Dilution :	WB 1:500-2000;IHC 1:50-300
Purification :	The antibody was affinity-purified from rabbit antiserum by affinity-chromatography using epitope-specific immunogen.
Concentration :	1 mg/ml
Storage Stability :	-15°C to -25°C/1 year(Do not lower than -25°C)

Observed Band : 88kD

Background : This gene encodes a member of the patatin-like phospholipase domain containing protein family. Members of this family are phospholipases which catalyze the cleavage of fatty acids from membrane phospholipids. The product of this gene is a calcium-independent phospholipase. Mutations in this gene have been associated with mitochondrial myopathy with lactic acidosis. Multiple transcript variants encoding different isoforms have been found for this gene. [provided by RefSeq, May 2015],

Function : catalytic activity:2-lysophosphatidylcholine + H(2)O = glycerophosphocholine + a carboxylate.,enzyme regulation:Inhibited by E-6-bromomethylene-3-1-naphthalenyl-2H-tetrahydropyran-2-one (BEL).,function:Calcium-independent phospholipase A2, which catalyzes the hydrolysis of the sn-2 position of glycerophospholipids, PtdSer and to a lower extent PtdCho. Cleaves membrane phospholipids.,similarity:Contains 1 patatin domain.,tissue specificity:Expressed in parenchymal tissues including heart, skeletal muscle, placenta, brain, liver and pancreas. Also expressed in bronchial epithelial cells and kidney. Highest expression is observed in skeletal muscle and heart.,

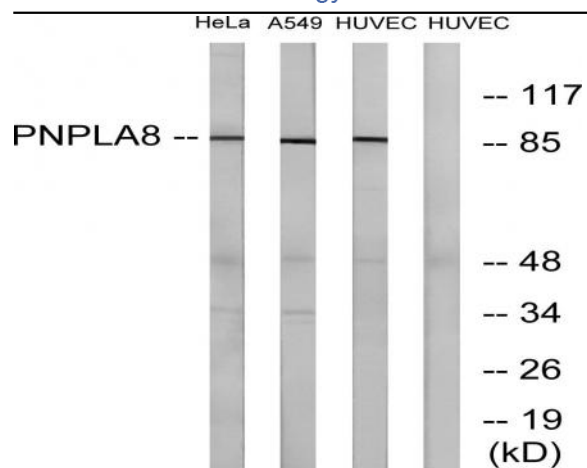
Subcellular Location : Endoplasmic reticulum membrane ; Single-pass membrane protein . Mitochondrion membrane ; Single-pass membrane protein . Peroxisome membrane ; Single-pass membrane protein .

Expression : Expressed in parenchymal tissues including heart, skeletal muscle, placenta, brain, liver and pancreas. Also expressed in bronchial epithelial cells and kidney. Highest expression is observed in skeletal muscle and heart.

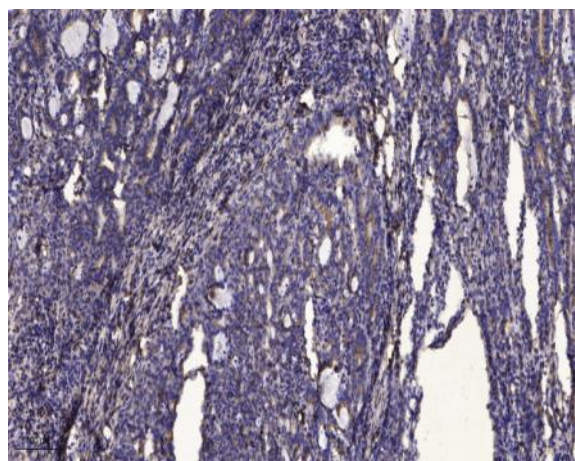
Products Images



Western Blot analysis of various cells using iPLA2 γ Polyclonal Antibody diluted at 1:2000



Western blot analysis of lysates from HUVEC, HeLa, and A549 cells, using PNPLA8 Antibody. The lane on the right is blocked with the synthesized peptide.



Immunohistochemical analysis of paraffin-embedded human Gastric adenocarcinoma. 1, Antibody was diluted at 1:200(4° overnight). 2, Tris-EDTA,pH9.0 was used for antigen retrieval. 3,Secondary antibody was diluted at 1:200(room temperature, 45min).