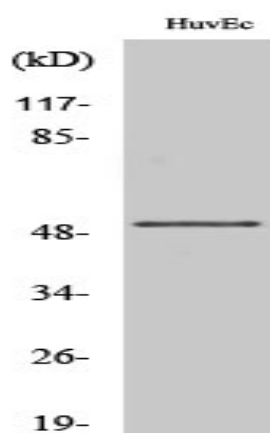


## IP3KA Polyclonal Antibody

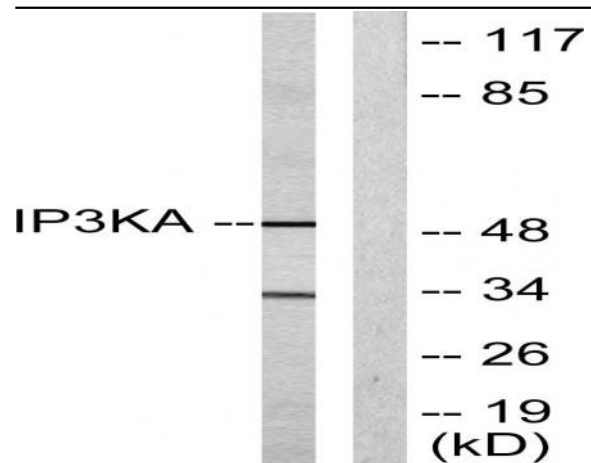
<b>Catalog No :</b>	YT2380
<b>Reactivity :</b>	Human;Mouse;Rat
<b>Applications :</b>	WB;ELISA;IHC
<b>Target :</b>	IP3KA
<b>Fields :</b>	>>Inositol phosphate metabolism;>>Metabolic pathways;>>Calcium signaling pathway;>>Phosphatidylinositol signaling system
<b>Gene Name :</b>	ITPKA
<b>Protein Name :</b>	Inositol-trisphosphate 3-kinase A
<b>Human Gene Id :</b>	3706
<b>Human Swiss Prot No :</b>	P23677
<b>Mouse Gene Id :</b>	228550
<b>Mouse Swiss Prot No :</b>	Q8R071
<b>Rat Gene Id :</b>	81677
<b>Rat Swiss Prot No :</b>	P17105
<b>Immunogen :</b>	The antiserum was produced against synthesized peptide derived from human IP3KA. AA range:396-445
<b>Specificity :</b>	IP3KA Polyclonal Antibody detects endogenous levels of IP3KA protein.
<b>Formulation :</b>	Liquid in PBS containing 50% glycerol, 0.5% BSA and 0.02% sodium azide.
<b>Source :</b>	Polyclonal, Rabbit,IgG
<b>Dilution :</b>	WB 1:500-2000;IHC 1:50-300; ELISA 2000-20000

<b>Purification :</b>	The antibody was affinity-purified from rabbit antiserum by affinity-chromatography using epitope-specific immunogen.
<b>Concentration :</b>	1 mg/ml
<b>Storage Stability :</b>	-15°C to -25°C/1 year(Do not lower than -25°C)
<b>Observed Band :</b>	52kD
<b>Cell Pathway :</b>	Inositol phosphate metabolism;Calcium;Phosphatidylinositol signaling system;
<b>Background :</b>	Regulates inositol phosphate metabolism by phosphorylation of second messenger inositol 1,4,5-trisphosphate to Ins(1,3,4,5)P4. The activity of the inositol 1,4,5-trisphosphate 3-kinase is responsible for regulating the levels of a large number of inositol polyphosphates that are important in cellular signaling. Both calcium/calmodulin and protein phosphorylation mechanisms control its activity. It is also a substrate for the cyclic AMP-dependent protein kinase, calcium/calmodulin- dependent protein kinase II, and protein kinase C in vitro.[provided by RefSeq, Apr 2011],
<b>Function :</b>	catalytic activity:ATP + 1D-myo-inositol 1,4,5-trisphosphate = ADP + 1D-myo-inositol 1,3,4,5-tetrakisphosphate.,enzyme regulation:IP3K is activated by calmodulin.,similarity:Belongs to the inositol phosphokinase (IPK) family.,
<b>Subcellular Location :</b>	Cytoplasm, cytoskeleton .
<b>Expression :</b>	Expressed in brain.

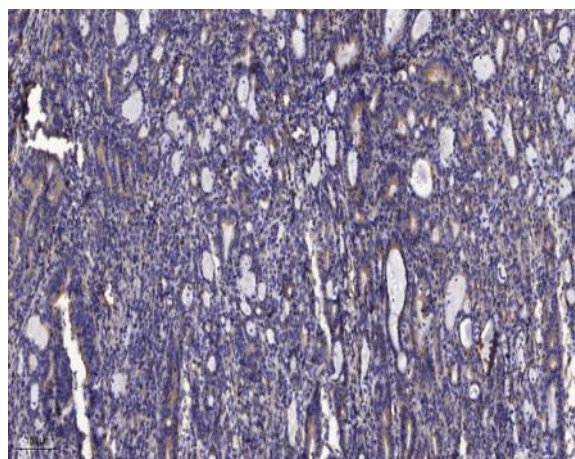
## Products Images



Western Blot analysis of various cells using IP3KA Polyclonal Antibody



Western blot analysis of lysates from HUVEC cells, using IP3KA Antibody. The lane on the right is blocked with the synthesized peptide.



Immunohistochemical analysis of paraffin-embedded human Gastric adenocarcinoma. 1, Antibody was diluted at 1:200(4° overnight). 2, Tris-EDTA,pH9.0 was used for antigen retrieval. 3,Secondary antibody was diluted at 1:200(room temperature, 45min).