

## GRK 7 Polyclonal Antibody

<b>Catalog No :</b>	YT2072
<b>Reactivity :</b>	Human
<b>Applications :</b>	WB;IF;ELISA
<b>Target :</b>	GRK 7
<b>Fields :</b>	>>Chemokine signaling pathway;>>Endocytosis;>>Phototransduction
<b>Gene Name :</b>	GRK7
<b>Protein Name :</b>	G protein-coupled receptor kinase 7
<b>Human Gene Id :</b>	131890
<b>Human Swiss Prot No :</b>	Q8WTQ7
<b>Immunogen :</b>	The antiserum was produced against synthesized peptide derived from human GRK7. AA range:371-420
<b>Specificity :</b>	GRK 7 Polyclonal Antibody detects endogenous levels of GRK 7 protein.
<b>Formulation :</b>	Liquid in PBS containing 50% glycerol, 0.5% BSA and 0.02% sodium azide.
<b>Source :</b>	Polyclonal, Rabbit,IgG
<b>Dilution :</b>	WB 1:500 - 1:2000. IF 1:200 - 1:1000. ELISA: 1:20000. Not yet tested in other applications.
<b>Purification :</b>	The antibody was affinity-purified from rabbit antiserum by affinity-chromatography using epitope-specific immunogen.
<b>Concentration :</b>	1 mg/ml
<b>Storage Stability :</b>	-15°C to -25°C/1 year(Do not lower than -25°C)
<b>Observed Band :</b>	62kD

**Cell Pathway :** Chemokine;Endocytosis;

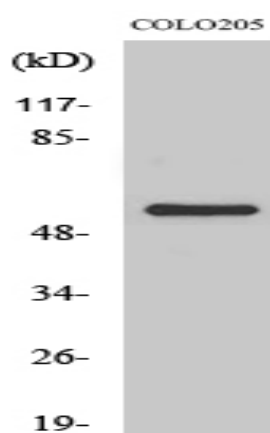
**Background :** This gene encodes a member of the guanine nucleotide-binding protein (G protein)-coupled receptor kinase subfamily of the Ser/Thr protein kinase family. It is specifically expressed in the retina and the encoded protein has been shown to phosphorylate cone opsins and initiate their deactivation. [provided by RefSeq, Jul 2008],

**Function :** catalytic activity:ATP + [G-protein-coupled receptor] = ADP + [G-protein-coupled receptor] phosphate.,function:Phosphorylates cone opsins thereby initiating their deactivation.,similarity:Belongs to the protein kinase superfamily. AGC Ser/Thr protein kinase family. GPRK subfamily.,similarity:Contains 1 AGC-kinase C-terminal domain.,similarity:Contains 1 protein kinase domain.,similarity:Contains 1 RGS domain.,tissue specificity:Retina. Cones and rod.,

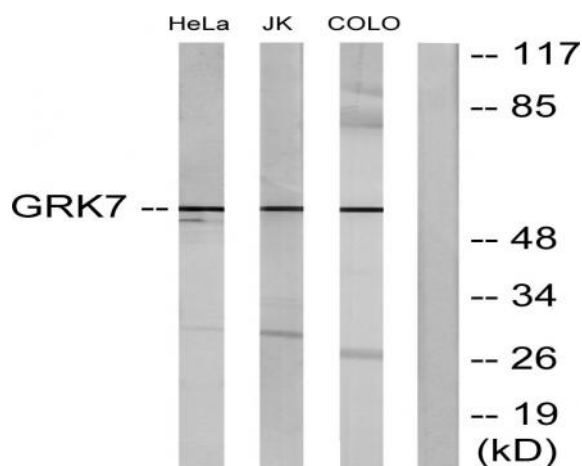
**Subcellular Location :** Membrane ; Lipid-anchor .

**Expression :** Retinal cones, outer and inner segments.

## Products Images



Western Blot analysis of various cells using GRK 7 Polyclonal Antibody



Western blot analysis of lysates from COLO205, Jurkat, and HeLa cells, using GRK7 Antibody. The lane on the right is blocked with the synthesized peptide.