

## GRIN3 Polyclonal Antibody

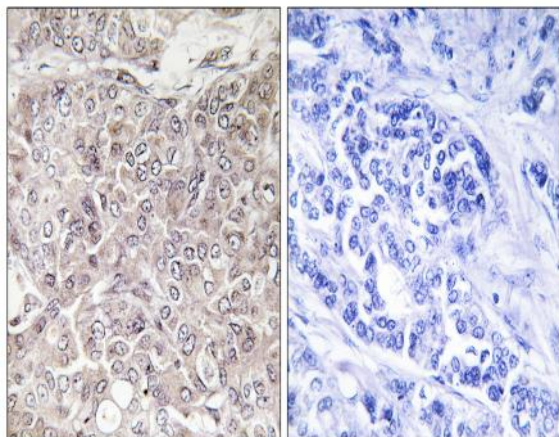
<b>Catalog No :</b>	YT2061
<b>Reactivity :</b>	Human;Mouse
<b>Applications :</b>	IHC;IF;ELISA
<b>Target :</b>	GRIN3
<b>Gene Name :</b>	GPRIN3
<b>Protein Name :</b>	G protein-regulated inducer of neurite outgrowth 3
<b>Human Gene Id :</b>	285513
<b>Human Swiss Prot No :</b>	Q6ZVF9
<b>Mouse Swiss Prot No :</b>	Q8BWS5
<b>Immunogen :</b>	The antiserum was produced against synthesized peptide derived from human GPRIN3. AA range:131-180
<b>Specificity :</b>	GRIN3 Polyclonal Antibody detects endogenous levels of GRIN3 protein.
<b>Formulation :</b>	Liquid in PBS containing 50% glycerol, 0.5% BSA and 0.02% sodium azide.
<b>Source :</b>	Polyclonal, Rabbit,IgG
<b>Dilution :</b>	IHC 1:100 - 1:300. ELISA: 1:40000.. IF 1:50-200
<b>Purification :</b>	The antibody was affinity-purified from rabbit antiserum by affinity-chromatography using epitope-specific immunogen.
<b>Concentration :</b>	1 mg/ml
<b>Storage Stability :</b>	-15°C to -25°C/1 year(Do not lower than -25°C)
<b>Molecularweight :</b>	82kD

**Background :** function:May be involved in neurite outgrowth.,

**Function :** function:May be involved in neurite outgrowth.,

**Expression :** Brain,

## Products Images



Immunohistochemistry analysis of paraffin-embedded human breast carcinoma, using GPRIN3 Antibody. The picture on the right is blocked with the synthesized peptide.