

VE-Cadherin mouse Monoclonal Antibody(3G8)

Catalog No :	YM3762
Reactivity :	Human;Mouse;Rat
Applications :	IHC;IF
Target :	VE-Cadherin
Fields :	>>Cell adhesion molecules;>>Leukocyte transendothelial migration;>>Fluid shear stress and atherosclerosis
Gene Name :	CDH5
Protein Name :	Cadherin-5 (7B4 antigen) (Vascular endothelial cadherin) (VE-cadherin) (CD antigen CD144)
Human Gene Id :	1003
Human Swiss Prot No :	P33151
Mouse Swiss Prot No :	P55284
Immunogen :	Synthetic Peptide of VE-Cadherin
Specificity :	The antibody detects endogenous VE-Cadherin protein
Formulation :	Liquid in PBS containing 50% glycerol, 0.5% BSA and 0.02% sodium azide.
Source :	Monoclonal, Mouse
Dilution :	IHC 1:50-300. IF 1:50-200
Purification :	The antibody was affinity-purified from mouse antiserum by affinity-chromatography using epitope-specific immunogen.
Concentration :	1 mg/ml
Storage Stability :	-15°C to -25°C/1 year(Do not lower than -25°C)

Observed Band : 80-115kD

Cell Pathway : Cell adhesion molecules (CAMs);Leukocyte transendothelial migration;

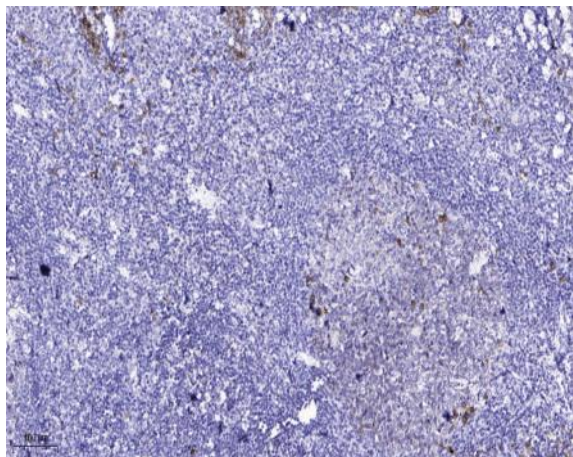
Background : This gene encodes a classical cadherin of the cadherin superfamily. The encoded preprotein is proteolytically processed to generate the mature glycoprotein. This calcium-dependent cell-cell adhesion molecule is comprised of five extracellular cadherin repeats, a transmembrane region and a highly conserved cytoplasmic tail. Functioning as a classical cadherin by imparting to cells the ability to adhere in a homophilic manner, this protein plays a role in endothelial adherens junction assembly and maintenance. This gene is located in a gene cluster in a region on the long arm of chromosome 16 that is involved in loss of heterozygosity events in breast and prostate cancer. [provided by RefSeq, Nov 2015],

Function : function:Cadherins are calcium dependent cell adhesion proteins.,function:Cadherins are calcium dependent cell adhesion proteins. They preferentially interact with themselves in a homophilic manner in connecting cells; cadherins may thus contribute to the sorting of heterogeneous cell types. This cadherin may play a important role in endothelial cell biology through control of the cohesion and organization of the intercellular junctions. It associates with alpha-catenin forming a link to the cytoskeleton.,similarity:Contains 5 cadherin domains.,subcellular location:Found at cell-cell boundaries and probably at cell-matrix boundaries.,tissue specificity:Endothelial tissues and brain.,

Subcellular Location : Cell junction . Cell membrane ; Single-pass type I membrane protein . Found at cell-cell boundaries and probably at cell-matrix boundaries. KRIT1 and CDH5 reciprocally regulate their localization to endothelial cell-cell junctions. .

Expression : Endothelial tissues and brain.

Products Images



Immunohistochemical analysis of paraffin-embedded human tonsil. 1, Antibody was diluted at 1:200(4° overnight). 2, Tris-EDTA,pH9.0 was used for antigen retrieval. 3,Secondary antibody was diluted at 1:200(room temperature, 45min).