

## IL-5 Polyclonal Antibody

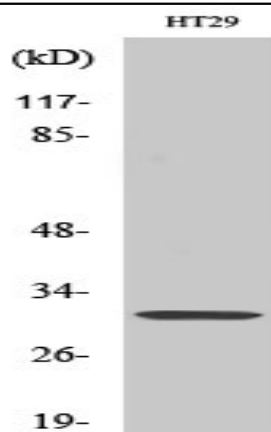
<b>Catalog No :</b>	YT2339
<b>Reactivity :</b>	Human;Mouse;Rat
<b>Applications :</b>	WB;IHC;IF;ELISA
<b>Target :</b>	IL-5
<b>Fields :</b>	>>Cytokine-cytokine receptor interaction;>>JAK-STAT signaling pathway;>>Hematopoietic cell lineage;>>IL-17 signaling pathway;>>Th1 and Th2 cell differentiation;>>T cell receptor signaling pathway;>>Fc epsilon RI signaling pathway;>>Intestinal immune network for IgA production;>>Pathways in cancer;>>Asthma;>>Autoimmune thyroid disease;>>Inflammatory bowel disease;>>Allograft rejection
<b>Gene Name :</b>	IL5
<b>Protein Name :</b>	Interleukin-5
<b>Human Gene Id :</b>	3567
<b>Human Swiss Prot No :</b>	P05113
<b>Mouse Gene Id :</b>	16191
<b>Mouse Swiss Prot No :</b>	P04401
<b>Rat Swiss Prot No :</b>	Q08125
<b>Immunogen :</b>	The antiserum was produced against synthesized peptide derived from human IL-5. AA range:43-92
<b>Specificity :</b>	IL-5 Polyclonal Antibody detects endogenous levels of IL-5 protein.
<b>Formulation :</b>	Liquid in PBS containing 50% glycerol, 0.5% BSA and 0.02% sodium azide.
<b>Source :</b>	Polyclonal, Rabbit,IgG

---

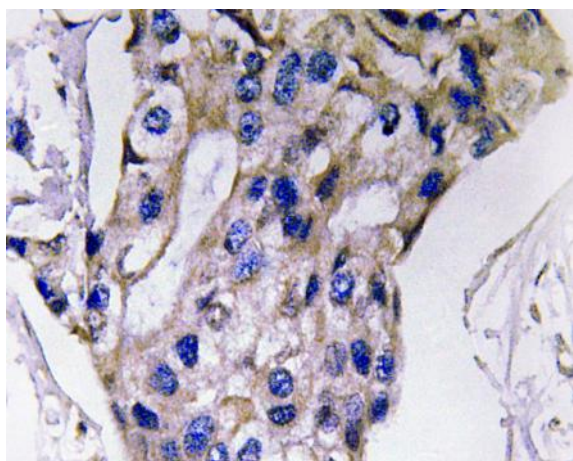
<b>Dilution :</b>	WB 1:500 - 1:2000. IHC 1:100 - 1:300. ELISA: 1:5000.. IF 1:50-200
<b>Purification :</b>	The antibody was affinity-purified from rabbit antiserum by affinity-chromatography using epitope-specific immunogen.
<b>Concentration :</b>	1 mg/ml
<b>Storage Stability :</b>	-15 °C to -25 °C/1 year(Do not lower than -25 °C)
<b>Observed Band :</b>	30kD
<b>Cell Pathway :</b>	Cytokine-cytokine receptor interaction;Jak_STAT;Hematopoietic cell lineage;T_Cell_Receptor;Fc epsilon RI;Intestinal immune network for IgA production;Asthma;Autoimmune thyroid disease;Allograft reject
<b>Background :</b>	This gene encodes a cytokine that acts as a growth and differentiation factor for both B cells and eosinophils. The encoded cytokine plays a major role in the regulation of eosinophil formation, maturation, recruitment and survival. The increased production of this cytokine may be related to pathogenesis of eosinophil-dependent inflammatory diseases. This cytokine functions by binding to its receptor, which is a heterodimer, whose beta subunit is shared with the receptors for interleukine 3 (IL3) and colony stimulating factor 2 (CSF2/GM-CSF). This gene is located on chromosome 5 within a cytokine gene cluster which includes interleukin 4 (IL4), interleukin 13 (IL13), and CSF2 . This gene, IL4, and IL13 may be regulated coordinately by long-range regulatory elements spread over 120 kilobases on chromosome 5q31. [provided by RefSeq, Jul 2013],
<b>Function :</b>	function:Factor that induces terminal differentiation of late-developing B-cells to immunoglobulin secreting cells.,online information:Interleukin-5 entry,similarity:Belongs to the IL-5 family.,subunit:Homodimer; disulfide-linked.,
<b>Subcellular Location :</b>	Secreted.

---

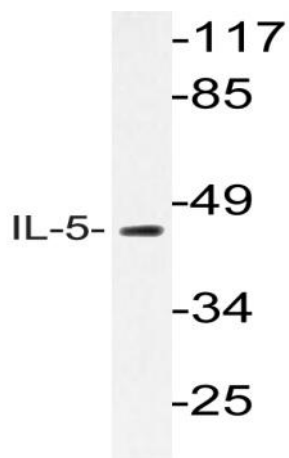
## Products Images



Western Blot analysis of various cells using IL-5 Polyclonal Antibody



Immunohistochemistry analysis of IL-5 antibody in paraffin-embedded human breast carcinoma tissue.



Western blot analysis of lysate from HT-29 cells, using IL-5 antibody.