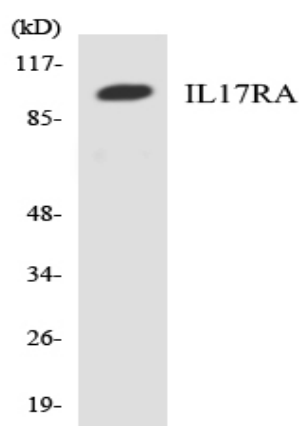


IL-17R α Polyclonal Antibody

| | |
|------------------------------|---|
| Catalog No : | YT2318 |
| Reactivity : | Human;Mouse |
| Applications : | WB;ELISA |
| Target : | IL-17R α |
| Fields : | >>Cytokine-cytokine receptor interaction;>>IL-17 signaling pathway;>>Alcoholic liver disease |
| Gene Name : | IL17RA |
| Protein Name : | Interleukin-17 receptor A |
| Human Gene Id : | 23765 |
| Human Swiss Prot No : | Q96F46 |
| Mouse Gene Id : | 16172 |
| Mouse Swiss Prot No : | Q60943 |
| Immunogen : | The antiserum was produced against synthesized peptide derived from human IL17RA. AA range:141-190 |
| Specificity : | IL-17R α Polyclonal Antibody detects endogenous levels of IL-17R α protein. |
| Formulation : | Liquid in PBS containing 50% glycerol, 0.5% BSA and 0.02% sodium azide. |
| Source : | Polyclonal, Rabbit,IgG |
| Dilution : | WB 1:500 - 1:2000. ELISA: 1:40000. Not yet tested in other applications. |
| Purification : | The antibody was affinity-purified from rabbit antiserum by affinity-chromatography using epitope-specific immunogen. |
| Concentration : | 1 mg/ml |

| | |
|-------------------------------|--|
| Storage Stability : | -15°C to -25°C/1 year(Do not lower than -25°C) |
| Observed Band : | 90kD |
| Cell Pathway : | Cytokine-cytokine receptor interaction; |
| Background : | Interleukin 17A (IL17A) is a proinflammatory cytokine secreted by activated T-lymphocytes. It is a potent inducer of the maturation of CD34-positive hematopoietic precursors into neutrophils. The transmembrane protein encoded by this gene (interleukin 17A receptor; IL17RA) is a ubiquitous type I membrane glycoprotein that binds with low affinity to interleukin 17A. Interleukin 17A and its receptor play a pathogenic role in many inflammatory and autoimmune diseases such as rheumatoid arthritis. Like other cytokine receptors, this receptor likely has a multimeric structure. Alternative splicing results in multiple transcript variants encoding different isoforms. [provided by RefSeq, Feb 2014], |
| Function : | function:Receptor for IL17A. Binds its ligand with low affinity, suggesting that additional components are involved in IL17A-induced signaling.,PTM:Glycosylated.,tissue specificity:Widely expressed., |
| Subcellular Location : | [Isoform 1]: Cell membrane ; Single-pass type I membrane protein .; [Isoform 2]: Secreted . |
| Expression : | Widely expressed. |

Products Images



Western blot analysis of the lysates from HeLa cells using IL17RA antibody.