

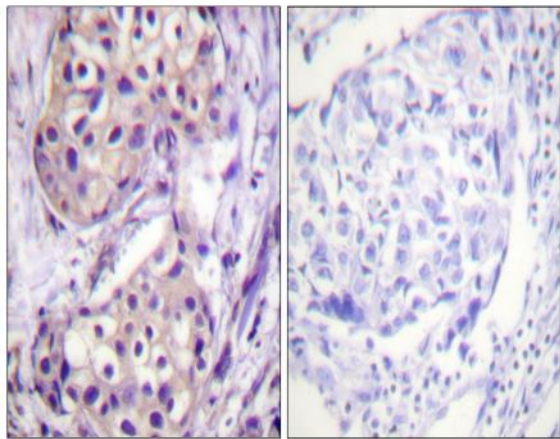
## IKK $\beta$ Polyclonal Antibody

<b>Catalog No :</b>	YT2304
<b>Reactivity :</b>	Human;Mouse;Rat
<b>Applications :</b>	WB;IHC;IF;ELISA
<b>Target :</b>	IKBKB
<b>Fields :</b>	>>Antifolate resistance;>>MAPK signaling pathway;>>Ras signaling pathway;>>Chemokine signaling pathway;>>NF-kappa B signaling pathway;>>FoxO signaling pathway;>>mTOR signaling pathway;>>PI3K-Akt signaling pathway;>>Apoptosis;>>Osteoclast differentiation;>>Toll-like receptor signaling pathway;>>NOD-like receptor signaling pathway;>>RIG-I-like receptor signaling pathway;>>Cytosolic DNA-sensing pathway;>>C-type lectin receptor signaling pathway;>>IL-17 signaling pathway;>>Th1 and Th2 cell differentiation;>>Th17 cell differentiation;>>T cell receptor signaling pathway;>>B cell receptor signaling pathway;>>TNF signaling pathway;>>Neurotrophin signaling pathway;>>Insulin signaling pathway;>>Adipocytokine signaling pathway;>>Type II diabetes mellitus;>>Insulin resistance;>>Non-alcoholic fatty liver disease;>>Alcoholic liver disease;>>Alzheimer disease;>>Epithelial cell signaling in Helicobacter pylori infection;>>Pathogenic Escherichia coli infection;>>Shigellosis;>>Salmonella infection;>>Yer
<b>Gene Name :</b>	IKBKB
<b>Protein Name :</b>	Inhibitor of nuclear factor kappa-B kinase subunit beta
<b>Human Gene Id :</b>	3551
<b>Human Swiss Prot No :</b>	O14920
<b>Mouse Gene Id :</b>	16150
<b>Mouse Swiss Prot No :</b>	O88351
<b>Rat Gene Id :</b>	84351
<b>Rat Swiss Prot No :</b>	Q9QY78

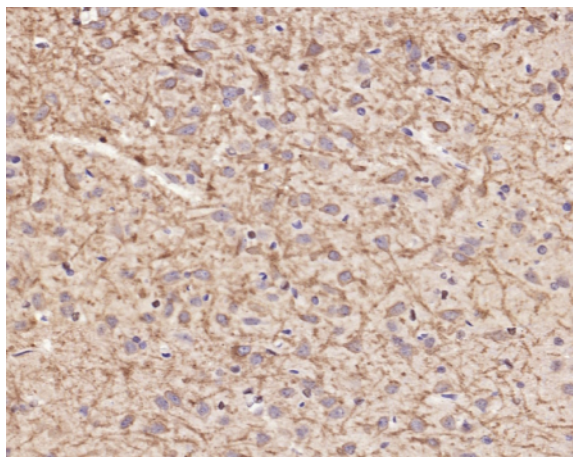
<b>Immunogen :</b>	The antiserum was produced against synthesized peptide derived from human IKK-beta. AA range:166-215
<b>Specificity :</b>	IKK $\beta$ Polyclonal Antibody detects endogenous levels of IKK $\beta$ protein.
<b>Formulation :</b>	Liquid in PBS containing 50% glycerol, 0.5% BSA and 0.02% sodium azide.
<b>Source :</b>	Polyclonal, Rabbit,IgG
<b>Dilution :</b>	WB 1:500-2000 IHC 1:100 - 1:300. ELISA: 1:10000. IF 1:50-200
<b>Purification :</b>	The antibody was affinity-purified from rabbit antiserum by affinity-chromatography using epitope-specific immunogen.
<b>Concentration :</b>	1 mg/ml
<b>Storage Stability :</b>	-15°C to -25°C/1 year(Do not lower than -25°C)
<b>Observed Band :</b>	86kD
<b>Cell Pathway :</b>	MAPK_ERK_Growth;MAPK_G_Protein;Chemokine;Apoptosis_Inhibition;Apoptosis_Mitochondrial;Apoptosis_Overview;Toll_Like;NOD-like receptor;RIG-I-like receptor;Cytosolic DNA-sensing pathway;T_Cell_Receptor;B
<b>Background :</b>	The protein encoded by this gene phosphorylates the inhibitor in the inhibitor/NF-kappa-B complex, causing dissociation of the inhibitor and activation of NF-kappa-B. The encoded protein itself is found in a complex of proteins. Several transcript variants, some protein-coding and some not, have been found for this gene. [provided by RefSeq, Sep 2011],
<b>Function :</b>	catalytic activity:ATP + [I-kappa-B protein] = ADP + [I-kappa-B phosphoprotein].,function:Acts as part of the IKK complex in the conventional pathway of NF-kappa-B activation and phosphorylates inhibitors of NF-kappa-B thus leading to the dissociation of the inhibitor/NF-kappa-B complex and ultimately the degradation of the inhibitor. Also phosphorylates NCOA3.,PTM:Ubiquitination on 'Ser-163' modulates phosphorylation on C-terminal serine residues.,PTM:Upon cytokine stimulation, phosphorylated on Ser-177 and Ser-181 by MEKK1 and/or MAP3K14/NIK; which enhances activity. Once activated, autophosphorylates on the C-terminal serine cluster; which decreases activity and prevents prolonged activation of the inflammatory response.,PTM:Yersinia yopJ may acetylate Ser/Thr residues, preventing phosphorylation and activation, which blocks the I-kappa-B signaling pathway.,similarity:Belongs to the p
<b>Subcellular</b>	Cytoplasm . Nucleus . Membrane raft . Colocalized with DPP4 in membrane rafts. .

**Expression :** Highly expressed in heart, placenta, skeletal muscle, kidney, pancreas, spleen, thymus, prostate, testis and peripheral blood.

## Products Images



Immunohistochemistry analysis of paraffin-embedded human breast carcinoma tissue, using IKK-beta Antibody. The picture on the right is blocked with the synthesized peptide.



Immunohistochemical analysis of paraffin-embedded human brain. 1, primary Antibody was diluted at 1:200(4° overnight). 2, EDTA pH 9.0 was used for antigen retrieval 3 Reday to use Secondary antibody( catalog: RS0011) was used at 37°C, 30min