

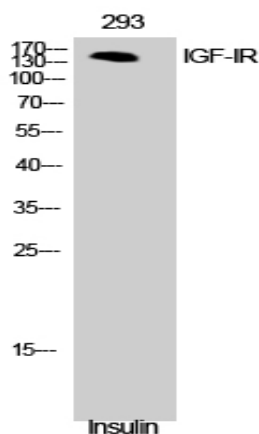
IGF-IR Polyclonal Antibody

Catalog No :	YT2283
Reactivity :	Human;Mouse;Rat
Applications :	WB;IHC;IF;ELISA
Target :	IGF-1R
Fields :	>>EGFR tyrosine kinase inhibitor resistance;>>Endocrine resistance;>>MAPK signaling pathway;>>Ras signaling pathway;>>Rap1 signaling pathway;>>HIF-1 signaling pathway;>>FoxO signaling pathway;>>Oocyte meiosis;>>Autophagy - animal;>>Endocytosis;>>mTOR signaling pathway;>>PI3K-Akt signaling pathway;>>AMPK signaling pathway;>>Longevity regulating pathway;>>Longevity regulating pathway - multiple species;>>Focal adhesion;>>Adherens junction;>>Signaling pathways regulating pluripotency of stem cells;>>Long-term depression;>>Ovarian steroidogenesis;>>Progesterone-mediated oocyte maturation;>>Pathways in cancer;>>Transcriptional misregulation in cancer;>>Proteoglycans in cancer;>>Glioma;>>Prostate cancer;>>Melanoma;>>Breast cancer;>>Hepatocellular carcinoma
Gene Name :	IGF1R
Protein Name :	Insulin-like growth factor 1 receptor
Human Gene Id :	3480
Human Swiss Prot No :	P08069
Mouse Gene Id :	16001
Mouse Swiss Prot No :	Q60751
Rat Gene Id :	25718
Rat Swiss Prot No :	P24062
Immunogen :	The antiserum was produced against synthesized peptide derived from human IGF1R. AA range:1131-1180

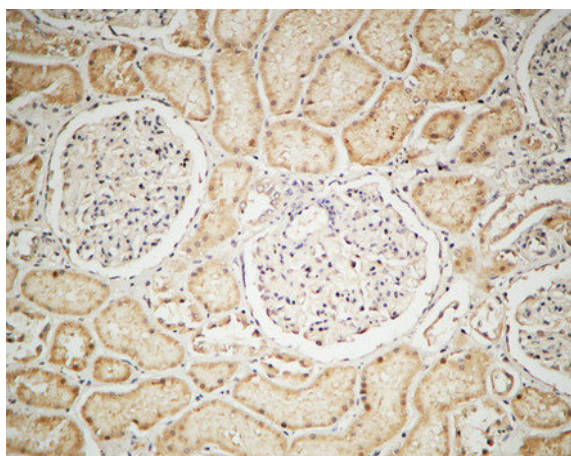
Specificity :	<u>IGF-IR Polyclonal Antibody detects endogenous levels of IGF-IR protein.</u>
Formulation :	<u>Liquid in PBS containing 50% glycerol, 0.5% BSA and 0.02% sodium azide.</u>
Source :	<u>Polyclonal, Rabbit,IgG</u>
Dilution :	<u>IHC: 100-300.WB 1:500 - 1:2000. ELISA: 1:10000.. IF 1:50-200</u>
Purification :	<u>The antibody was affinity-purified from rabbit antiserum by affinity-chromatography using epitope-specific immunogen.</u>
Concentration :	<u>1 mg/ml</u>
Storage Stability :	<u>-15°C to -25°C/1 year(Do not lower than -25°C)</u>
Observed Band :	<u>pro: 155kD, recetor beta: 95kD</u>
Cell Pathway :	<u>Oocyte meiosis;Endocytosis;Focal adhesion;Adherens_Junction;Long-term depression;Progesterone-mediated oocyte maturation;Pathways in cancer;Colorectal cancer;Glioma;Prostate cancer;Melanoma;</u>
Background :	<u>This receptor binds insulin-like growth factor with a high affinity. It has tyrosine kinase activity. The insulin-like growth factor I receptor plays a critical role in transformation events. Cleavage of the precursor generates alpha and beta subunits. It is highly overexpressed in most malignant tissues where it functions as an anti-apoptotic agent by enhancing cell survival. Alternatively spliced transcript variants encoding distinct isoforms have been found for this gene. [provided by RefSeq, May 2014],</u>
Function :	<u>catalytic activity:ATP + a [protein]-L-tyrosine = ADP + a [protein]-L-tyrosine phosphate.,disease:Defects in IGF1R may be a cause in some cases of resistance to insulin-like growth factor 1 (IGF1 resistance) [MIM:270450]. IGF1 resistance is a growth deficiency disorder characterized by intrauterine growth retardation and poor postnatal growth accompanied with increased plasma IGF1.,enzyme regulation:Autophosphorylation activates the kinase activity.,function:This receptor binds insulin-like growth factor 1 (IGF1) with a high affinity and IGF2 with a lower affinity. It has a tyrosine-protein kinase activity, which is necessary for the activation of the IGF1-stimulated downstream signaling cascade. When present in a hybrid receptor with INSR, binds IGF1. PubMed:12138094 shows that hybrid receptors composed of IGF1R and INSR isoform Long are activated with a high affinity by IGF1, with low a</u>
Subcellular Location :	<u>Cell membrane ; Single-pass type I membrane protein .</u>
Expression :	<u>Found as a hybrid receptor with INSR in muscle, heart, kidney, adipose tissue, skeletal muscle, hepatoma, fibroblasts, spleen and placenta (at protein level).</u>

Expressed in a variety of tissues. Overexpressed in tumors, including melanomas, cancers of the colon, pancreas prostate and kidney.

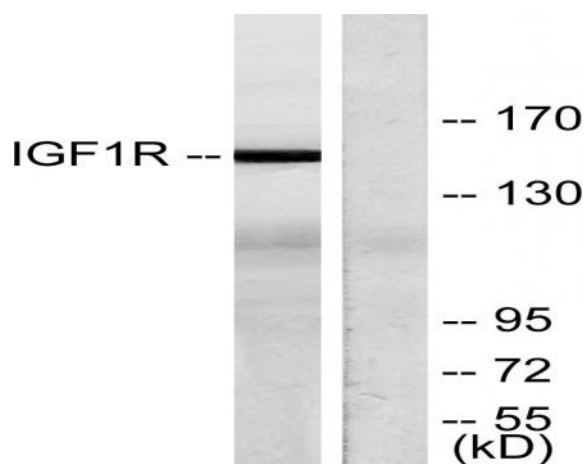
Products Images



Western Blot analysis of NIH-3T3 cells using IGF-IR Polyclonal Antibody diluted at 1:500



Immunohistochemical analysis of paraffin-embedded Human testis. 1, Antibody was diluted at 1:100(4° overnight). 2, High-pressure and temperature EDTA, pH8.0 was used for antigen retrieval. 3, Secondary antibody was diluted at 1:200(room temperature, 30min).



Western blot analysis of lysates from 293 cells, treated with Insulin, using IGF1R Antibody. The lane on the right is blocked with the synthesized peptide.