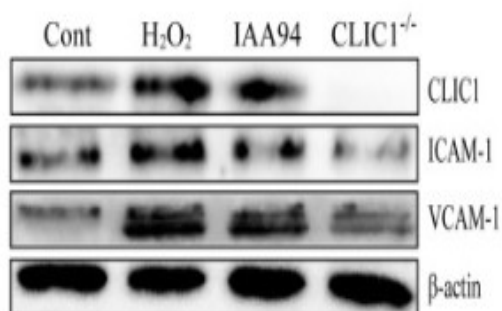


ICAM-1 Polyclonal Antibody

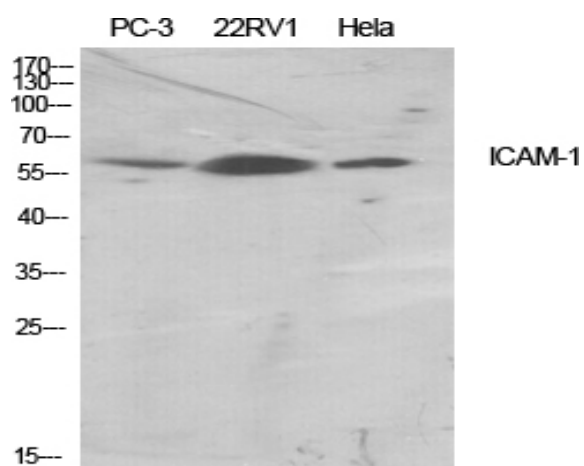
Catalog No :	YT2269
Reactivity :	Human;Rat;Mouse;
Applications :	WB;IHC;IF;ELISA
Target :	ICAM-1
Fields :	>>NF-kappa B signaling pathway;>>Cell adhesion molecules;>>Natural killer cell mediated cytotoxicity;>>TNF signaling pathway;>>Leukocyte transendothelial migration;>>AGE-RAGE signaling pathway in diabetic complications;>>African trypanosomiasis;>>Malaria;>>Staphylococcus aureus infection;>>Influenza A;>>Human T-cell leukemia virus 1 infection;>>Kaposi sarcoma-associated herpesvirus infection;>>Epstein-Barr virus infection;>>Rheumatoid arthritis;>>Viral myocarditis;>>Lipid and atherosclerosis;>>Fluid shear stress and atherosclerosis
Gene Name :	ICAM1
Protein Name :	Intercellular adhesion molecule 1
Human Gene Id :	3383
Human Swiss Prot No :	P05362
Mouse Swiss Prot No :	P13597
Immunogen :	The antiserum was produced against synthesized peptide derived from human ICAM-1. AA range:479-528
Specificity :	ICAM-1 Polyclonal Antibody detects endogenous levels of ICAM-1 protein.
Formulation :	Liquid in PBS containing 50% glycerol, 0.5% BSA and 0.02% sodium azide.
Source :	Polyclonal, Rabbit,IgG
Dilution :	WB 1:500 - 1:2000. ELISA: 1:10000.. IF 1:50-200
	The antibody was affinity-purified from rabbit antiserum by affinity-

Purification :	<u>chromatography using epitope-specific immunogen.</u>
Concentration :	<u>1 mg/ml</u>
Storage Stability :	<u>-15°C to -25°C/1 year(Do not lower than -25°C)</u>
Observed Band :	<u>58kD</u>
Cell Pathway :	<u>Cell adhesion molecules (CAMs);Natural killer cell mediated cytotoxicity;Leukocyte transendothelial migration;Viral myocarditis;</u>
Background :	<u>This gene encodes a cell surface glycoprotein which is typically expressed on endothelial cells and cells of the immune system. It binds to integrins of type CD11a / CD18, or CD11b / CD18 and is also exploited by Rhinovirus as a receptor. [provided by RefSeq, Jul 2008],</u>
Function :	<u>function:ICAM proteins are ligands for the leukocyte adhesion protein LFA-1 (integrin alpha-L/beta-2). During leukocyte trans-endothelial migration, ICAM1 engagement promotes the assembly of endothelial apical cups through SGEF and RHOG activation. In case of rhinovirus infection acts as a cellular receptor for the virus.,online information:ICAM-1,online information:Icosahedral capsid structure,online information:Intercellular adhesion molecule entry,polymorphism:Homozygotes with ICAM1-Kalifi Met-56 seem to have an increased risk for cerebral malaria.,PTM:Monoubiquitinated, which is promoted by MARCH9 and leads to endocytosis.,similarity:Belongs to the immunoglobulin superfamily. ICAM family.,similarity:Contains 5 Ig-like C2-type (immunoglobulin-like) domains.,subunit:Homodimer (Probable). Interacts with human herpesvirus 8 MIR2 protein (Probable). Interacts with MUC1 and promotes cell a</u>
Subcellular Location :	<u>Membrane; Single-pass type I membrane protein.</u>
Expression :	<u>Blood,Kidney,Liver,Melanoma,Plasma,</u>

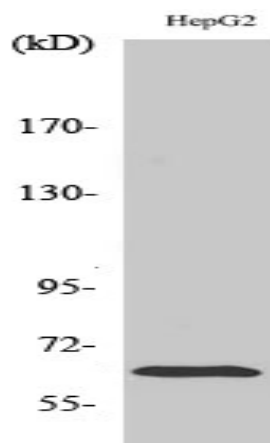
Products Images

C


Xu, Yingling, et al. "CLIC1 inhibition attenuates vascular inflammation, oxidative stress, and endothelial injury." PloS one 11.11 (2016): e0166790.



Western Blot analysis of various cells using ICAM-1 Polyclonal Antibody diluted at 1:500



Western Blot analysis of HepG2 cells using ICAM-1 Polyclonal Antibody diluted at 1:500