

## Histone H3 Polyclonal Antibody

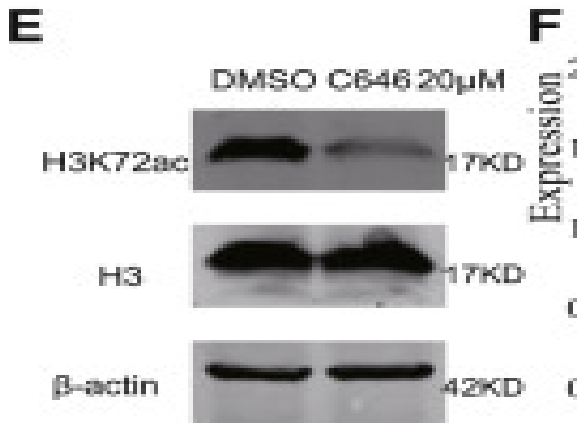
<b>Catalog No :</b>	YT2163
<b>Reactivity :</b>	Human;Mouse;Rat;Cat;Rice
<b>Applications :</b>	WB;IHC;IF;ELISA
<b>Target :</b>	Histone H3
<b>Fields :</b>	>>Neutrophil extracellular trap formation;>>Alcoholism;>>Shigellosis;>>Transcriptional misregulation in cancer;>>Systemic lupus erythematosus
<b>Gene Name :</b>	HIST1H3A
<b>Protein Name :</b>	Histone H3.1
<b>Human Gene Id :</b>	8350/8351/8352/8353/8354/8355/8356/8357/8358/8968
<b>Human Swiss Prot No :</b>	P68431/Q71DI3/P84243
<b>Mouse Gene Id :</b>	319152/15077/15078
<b>Rat Gene Id :</b>	291159/100361558
<b>Rat Swiss Prot No :</b>	Q6LED0/P84245
<b>Immunogen :</b>	The antiserum was produced against synthesized peptide derived from human Histone H3.1. AA range:1-50
<b>Specificity :</b>	Histone H3 Polyclonal Antibody detects endogenous levels of Histone H3 protein.
<b>Formulation :</b>	Liquid in PBS containing 50% glycerol, 0.5% BSA and 0.02% sodium azide.
<b>Source :</b>	Polyclonal, Rabbit,IgG
<b>Dilution :</b>	WB 1:500 - 1:2000. IHC 1:100 - 1:300. IF 1:200 - 1:1000. ELISA: 1:20000. Not yet tested in other applications.

---

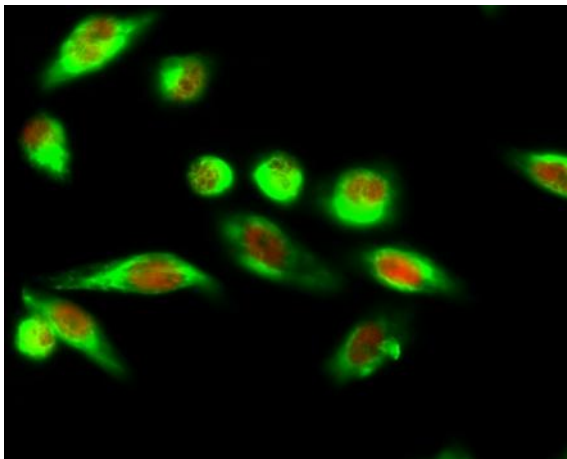
<b>Purification :</b>	The antibody was affinity-purified from rabbit antiserum by affinity-chromatography using epitope-specific immunogen.
<b>Concentration :</b>	1 mg/ml
<b>Storage Stability :</b>	-15°C to -25°C/1 year(Do not lower than -25°C)
<b>Observed Band :</b>	20kD
<b>Cell Pathway :</b>	Protein_Acetylation
<b>Background :</b>	<p>Histones are basic nuclear proteins that are responsible for the nucleosome structure of the chromosomal fiber in eukaryotes. This structure consists of approximately 146 bp of DNA wrapped around a nucleosome, an octamer composed of pairs of each of the four core histones (H2A, H2B, H3, and H4). The chromatin fiber is further compacted through the interaction of a linker histone, H1, with the DNA between the nucleosomes to form higher order chromatin structures. This gene is intronless and encodes a replication-dependent histone that is a member of the histone H3 family. Transcripts from this gene lack polyA tails; instead, they contain a palindromic termination element. This gene is found in the large histone gene cluster on chromosome 6p22-p21.3. [provided by RefSeq, Aug 2015],</p>
<b>Function :</b>	<p>caution:Was originally (PubMed:2587222) thought to originate from mouse.,developmental stage:Expressed during S phase, then expression strongly decreases as cell division slows down during the process of differentiation.,function:Core component of nucleosome. Nucleosomes wrap and compact DNA into chromatin, limiting DNA accessibility to the cellular machineries which require DNA as a template. Histones thereby play a central role in transcription regulation, DNA repair, DNA replication and chromosomal stability. DNA accessibility is regulated via a complex set of post-translational modifications of histones, also called histone code, and nucleosome remodeling.,mass spectrometry:Monoisotopic with N-acetylserine PubMed:16457589,miscellaneous:This histone is only present in mammals and is enriched in acetylation of Lys-15 and dimethylation of Lys-10 (H3K9me2).,PTM:Acetylation is generally I</p>
<b>Subcellular Location :</b>	Nucleus. Chromosome.
<b>Expression :</b>	Blood,Epithelium,Kidney,Lung,Ovary,Spleen,Uterus,

---

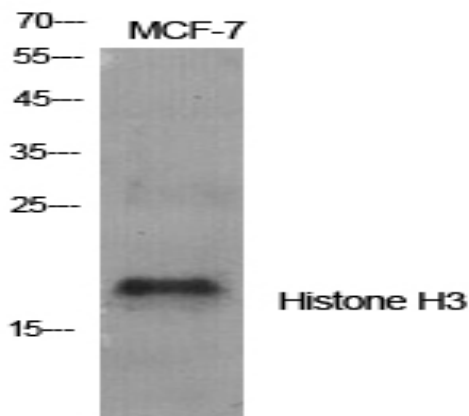
## Products Images



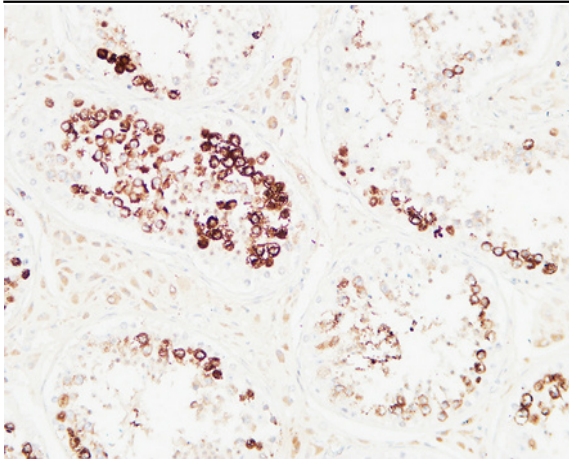
Zhao, Hongying, et al. "Comprehensive landscape of epigenetic-dysregulated lncRNAs reveals a profound role of enhancers in carcinogenesis in BC subtypes." *Molecular Therapy-Nucleic Acids* 23 (2021): 667-681.



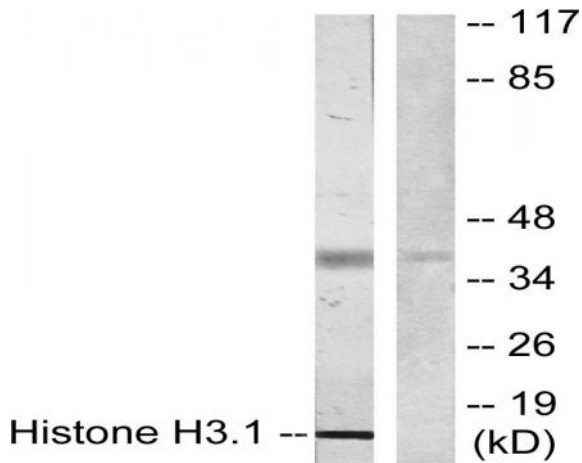
Immunofluorescence analysis of HeLa cell. 1, Histone H3 Polyclonal Antibody (red) was diluted at 1:200 (4° overnight). LC3A mouse Monoclonal Antibody (5G10) (green) was diluted at 1:200 (4° overnight). 2, Goat Anti Rabbit Alexa Fluor 594 Catalog: RS3611 was diluted at 1:1000 (room temperature, 50min). Goat Anti Mouse Alexa Fluor 488 Catalog: RS3208 was diluted at 1:1000 (room temperature, 50min).



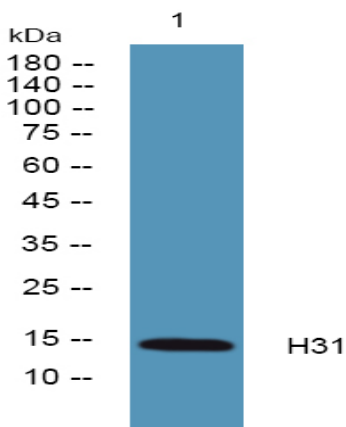
Western Blot analysis of various cells using Histone H3 Polyclonal Antibody diluted at 1:2000 cells nucleus extracted by Minute TM Cytoplasmic and Nuclear Fractionation kit (SC-003, Inventbiotech, MN, USA).



Immunohistochemical analysis of paraffin-embedded Human testis. 1, Antibody was diluted at 1:200(4° overnight). 2, High-pressure and temperature EDTA, pH8.0 was used for antigen retrieval. 3,Secondary antibody was diluted at 1:200(room temperature, 30min).



Western blot analysis of lysates from COLO205 cells, using Histone H3.1 Antibody. The lane on the right is blocked with the synthesized peptide.



Western blot analysis of lysates from Jurkat cells, primary antibody was diluted at 1:1000, 4° over night